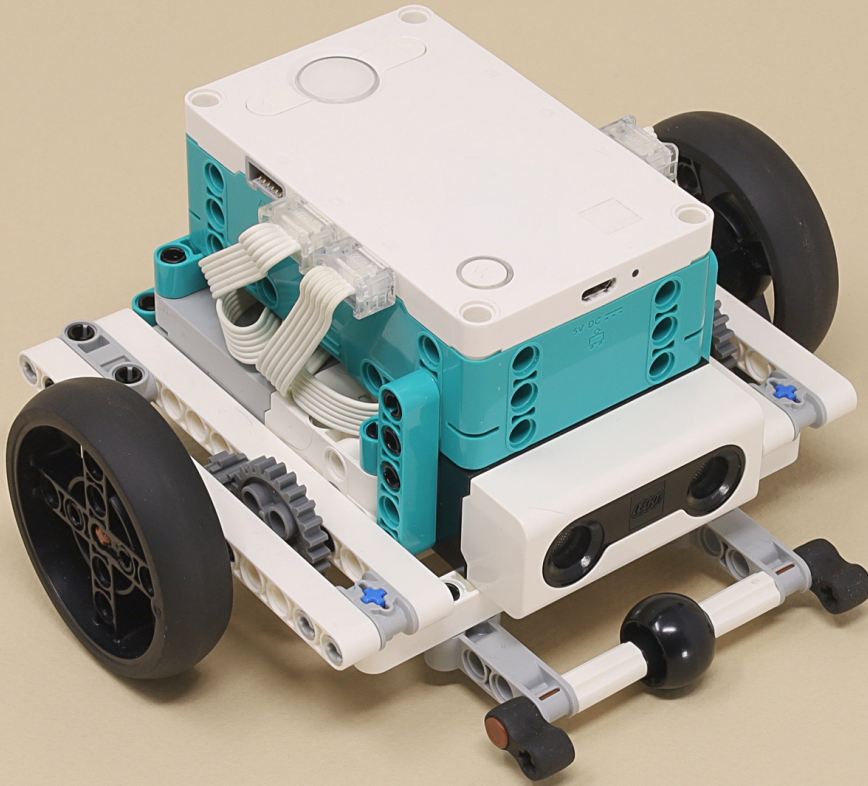


Sprinter



Scroll for
building
instructions





9

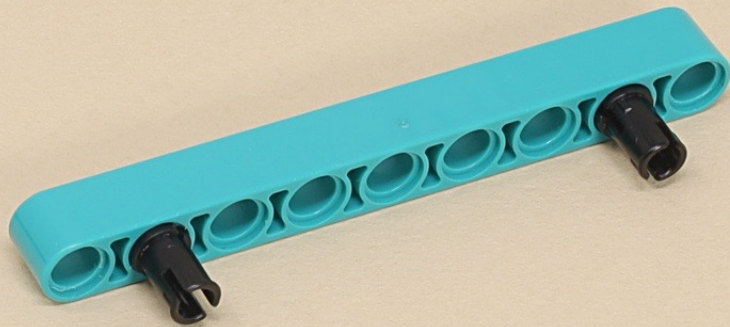
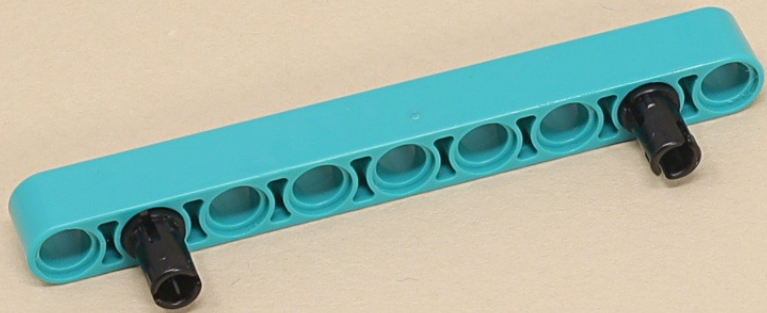


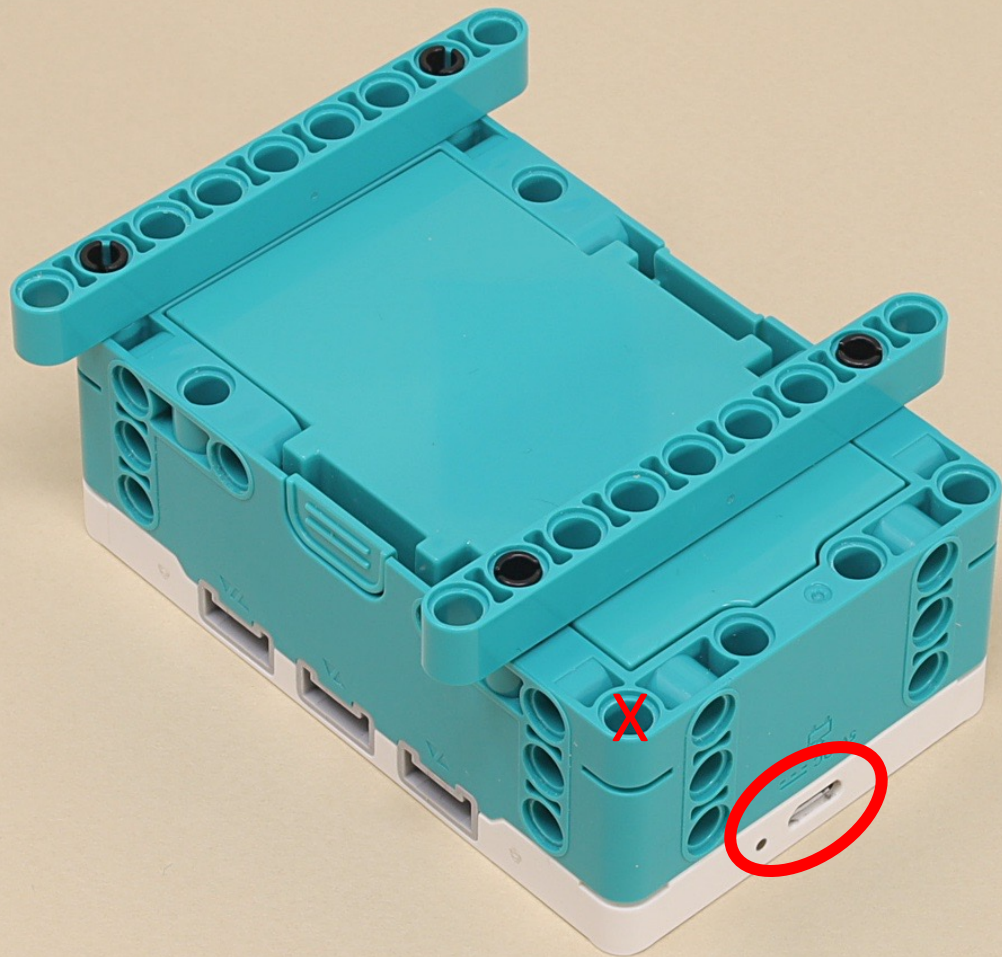
9



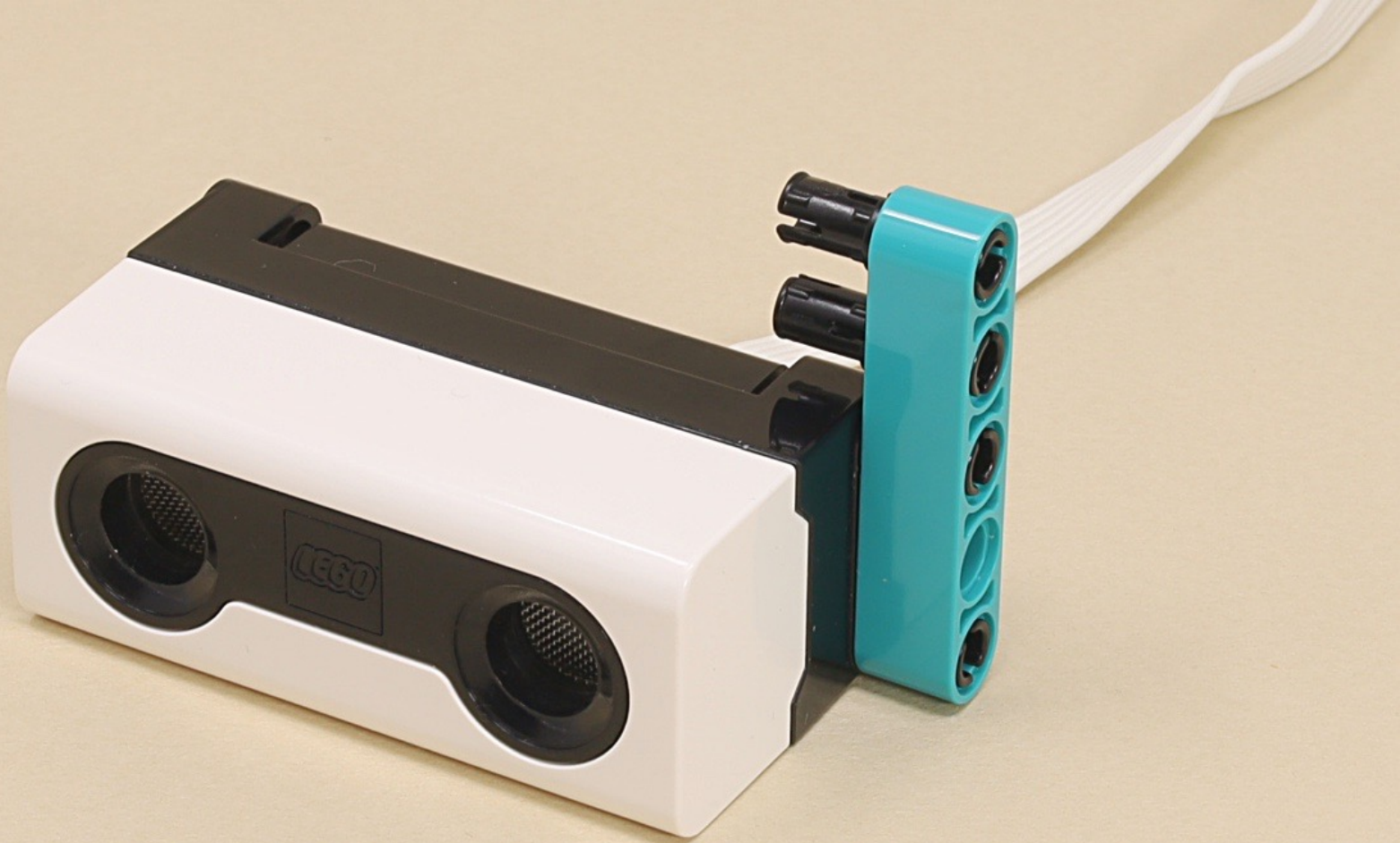
(12 x)

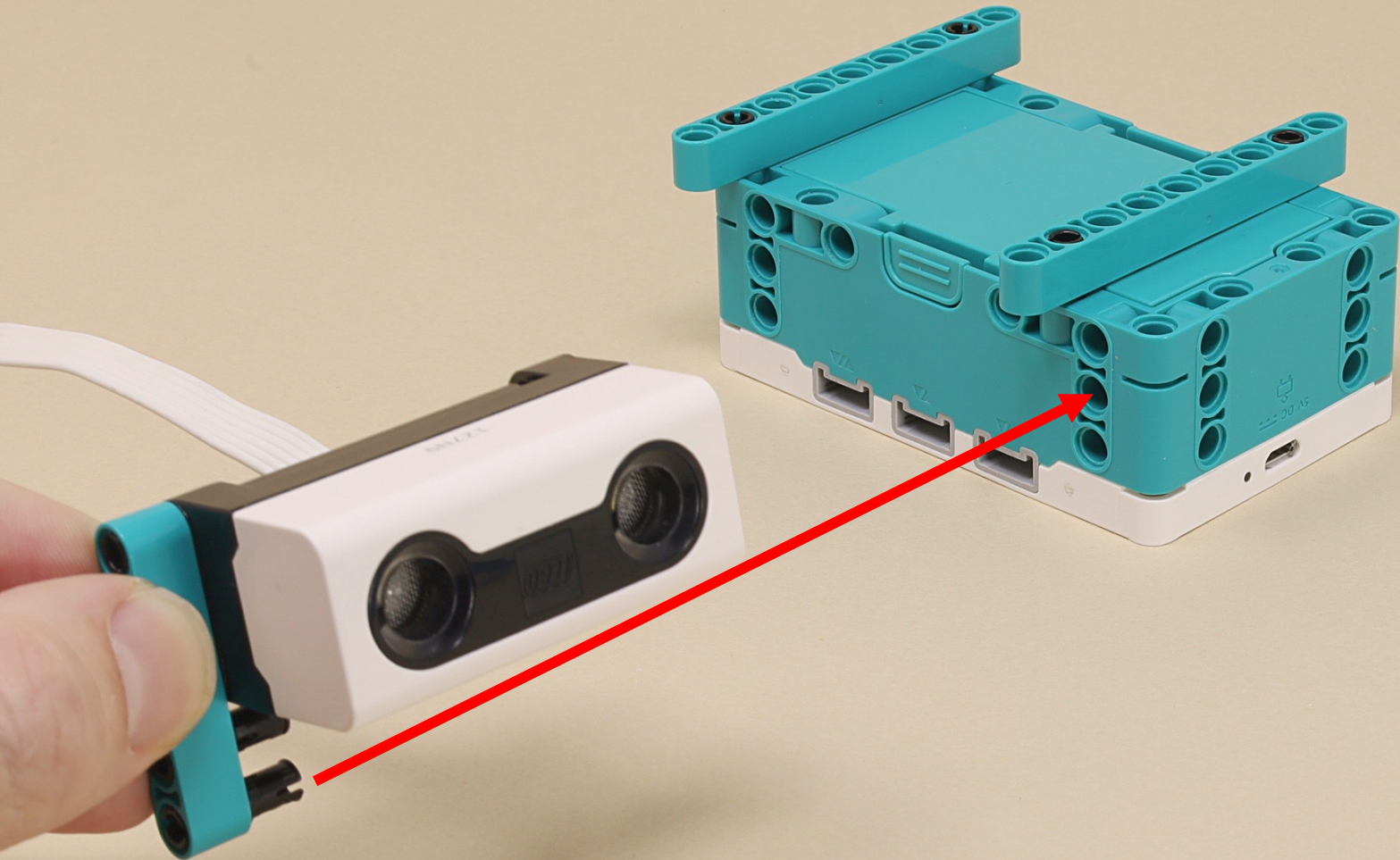


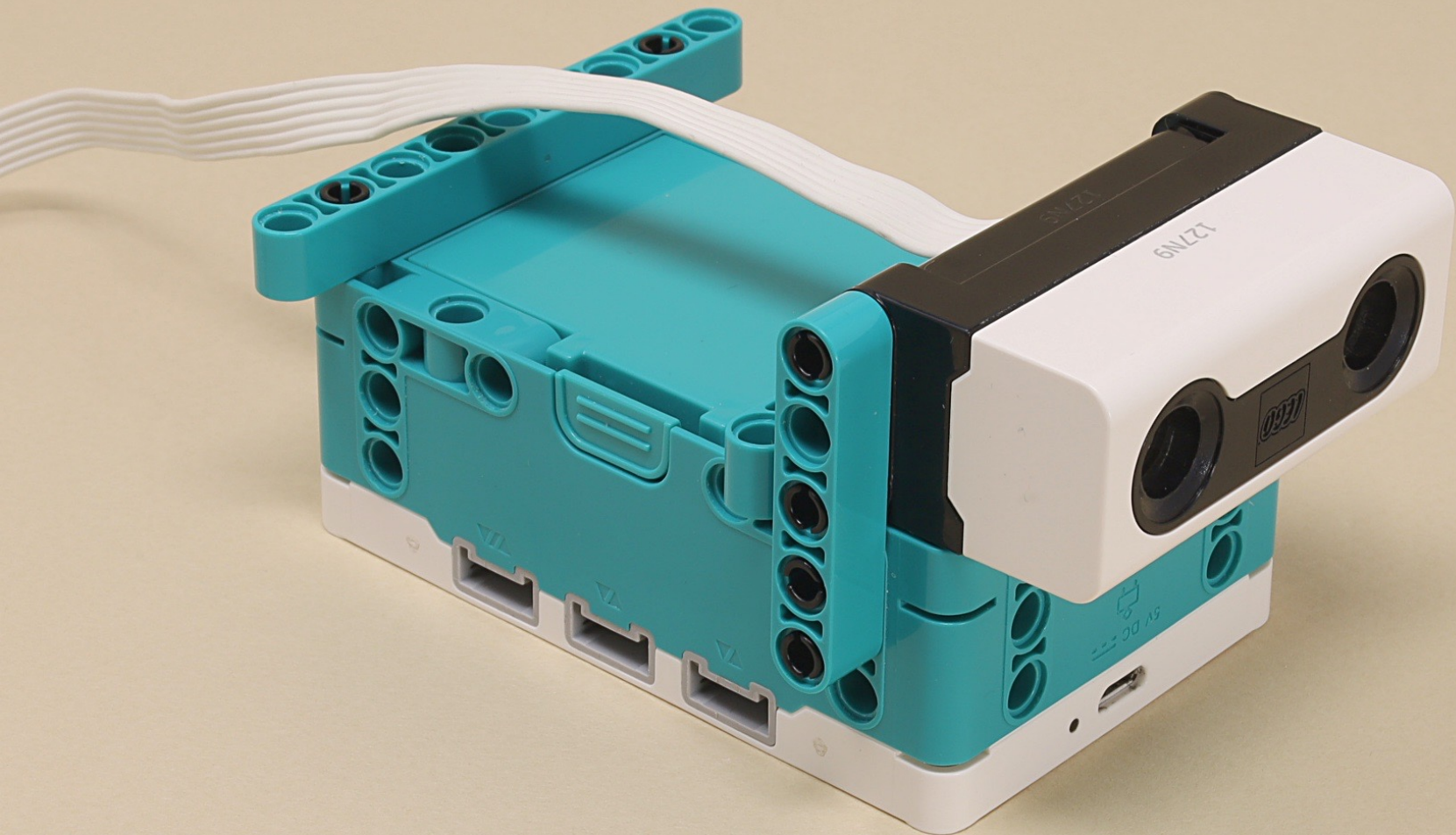


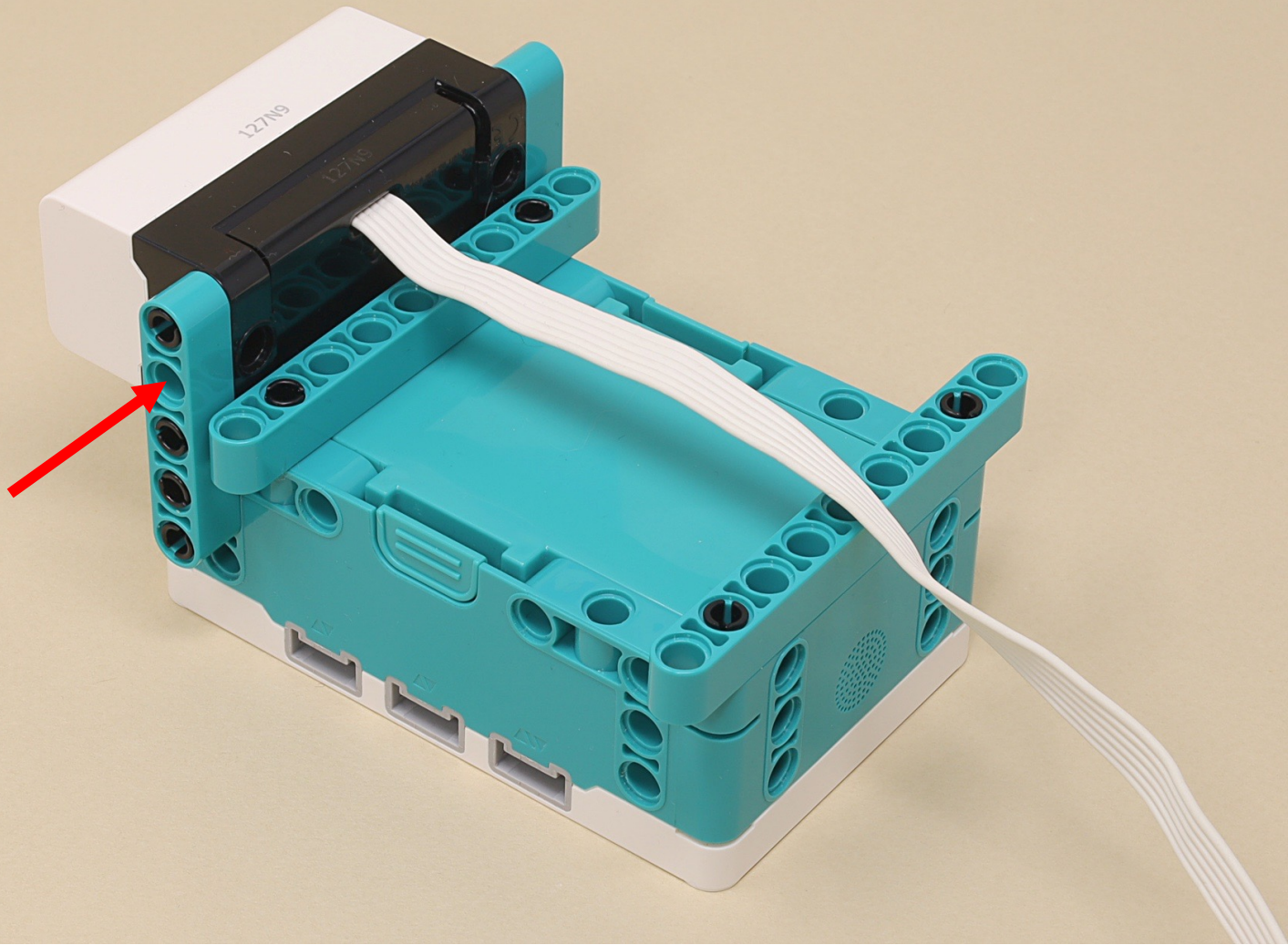


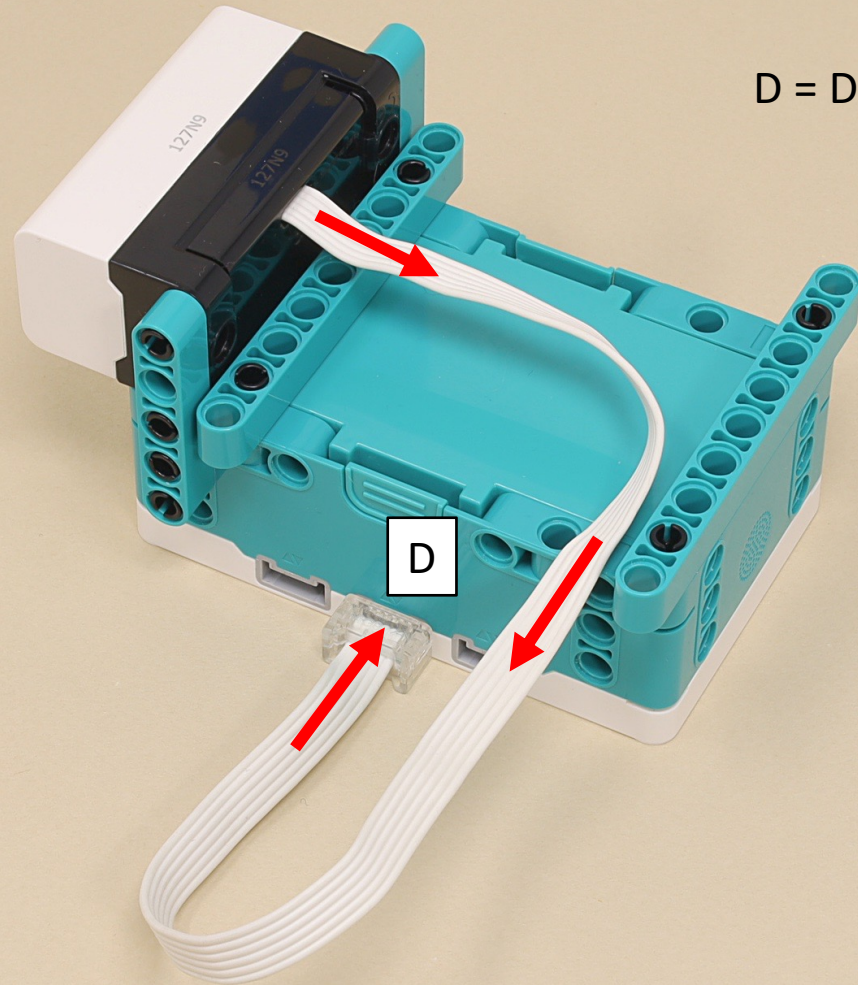












D = Distance Sensor

D



13



13



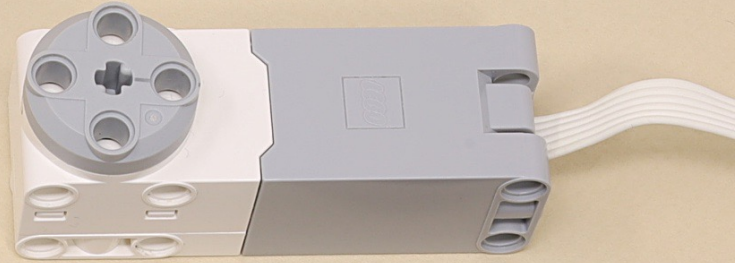
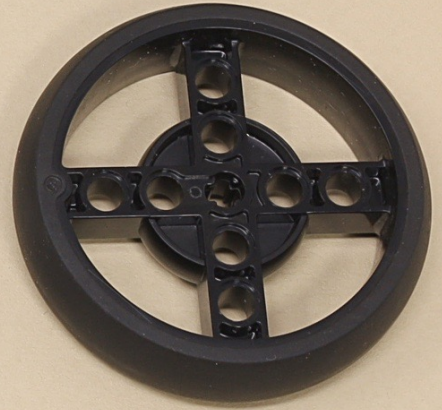
5

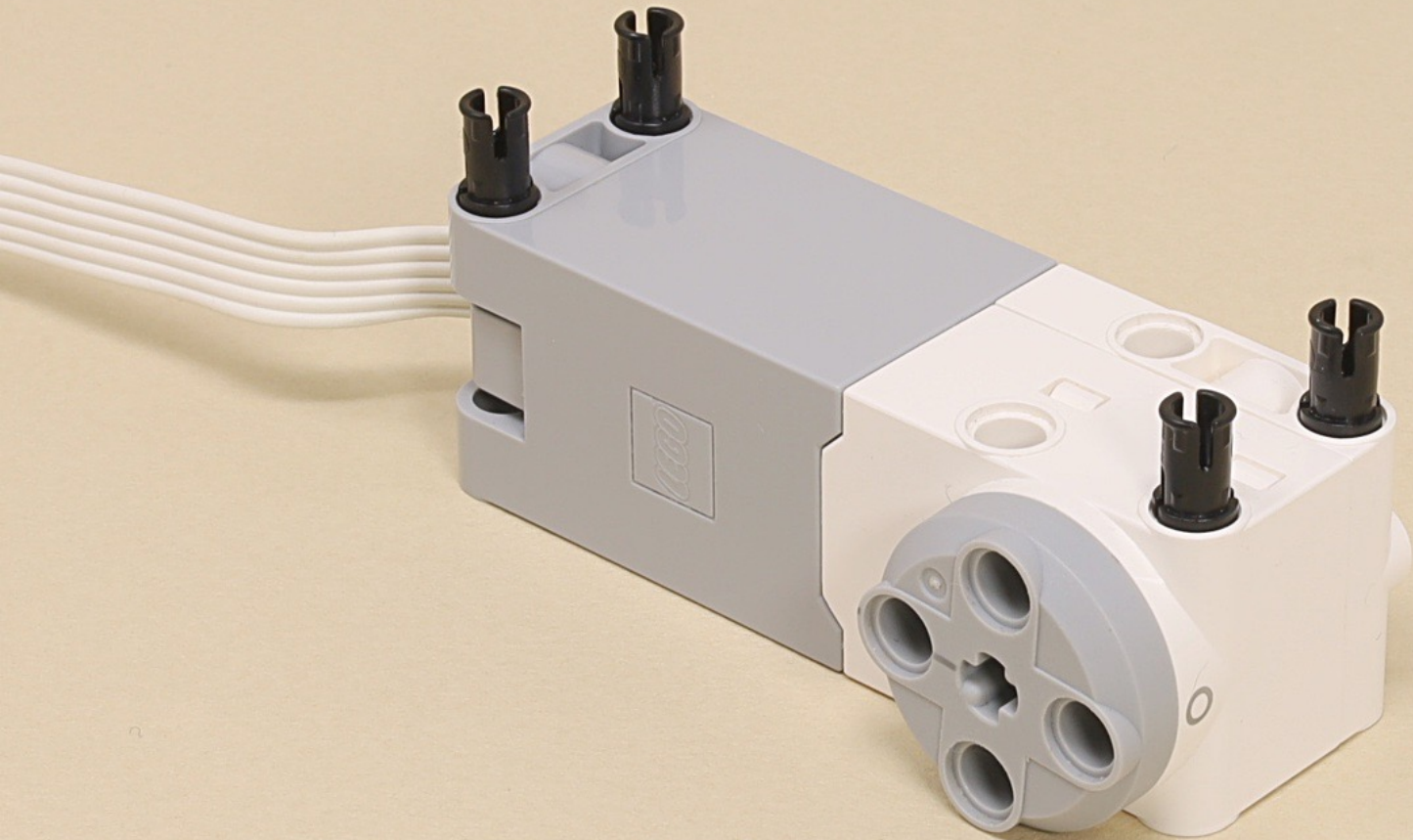


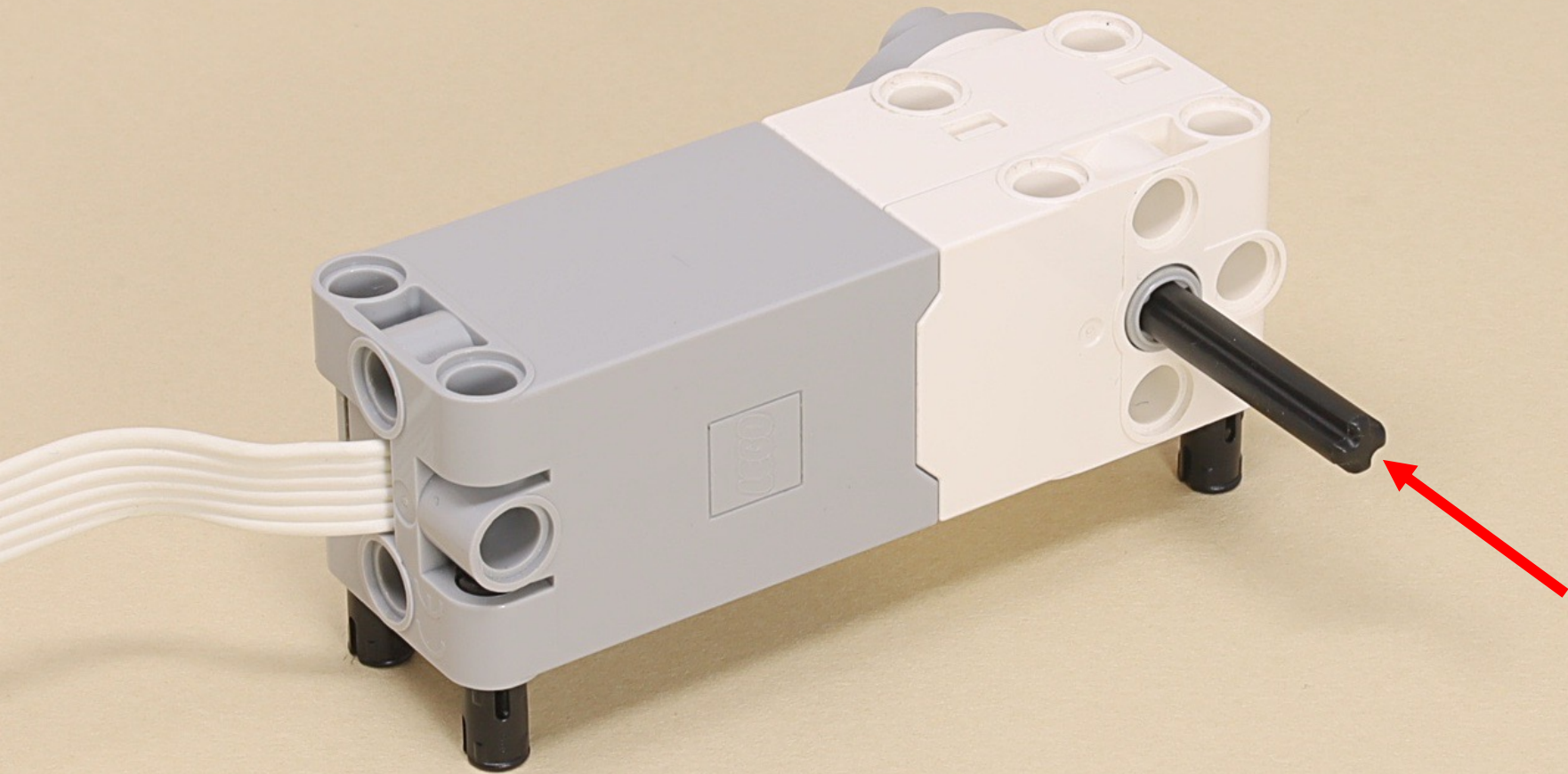
4

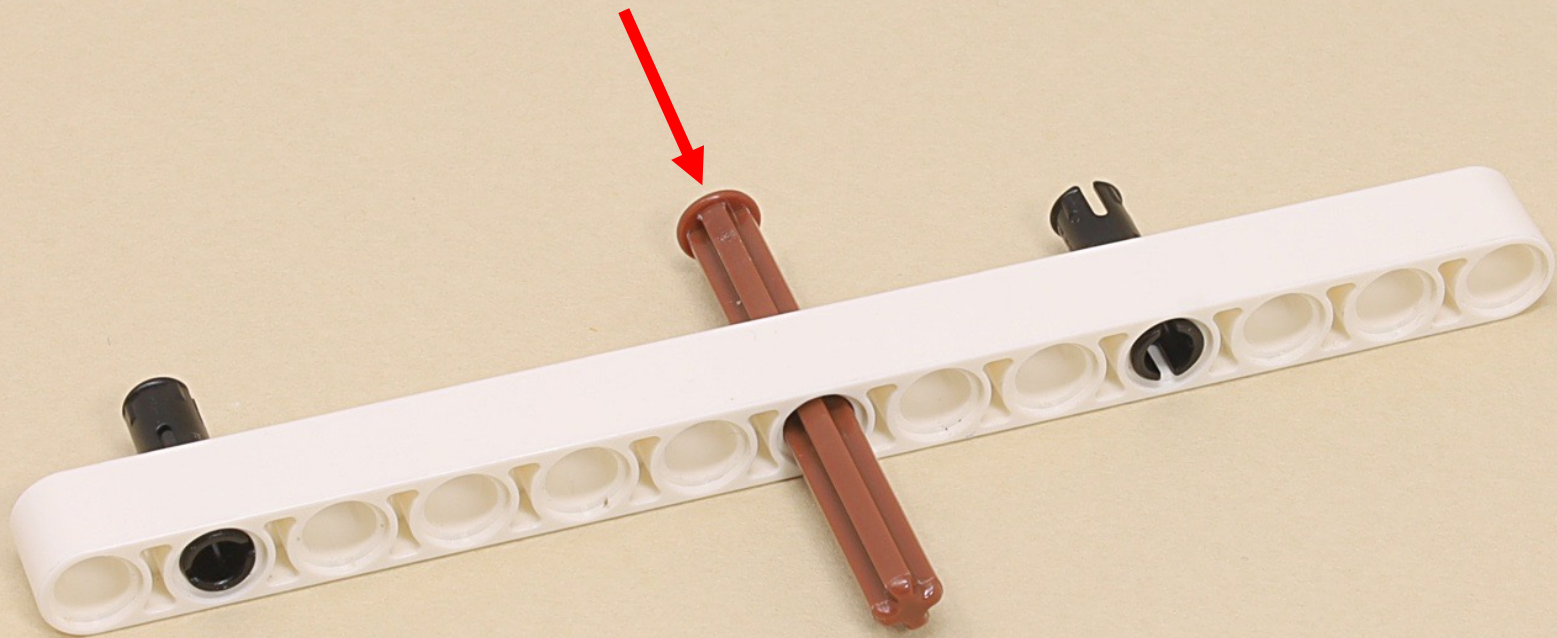


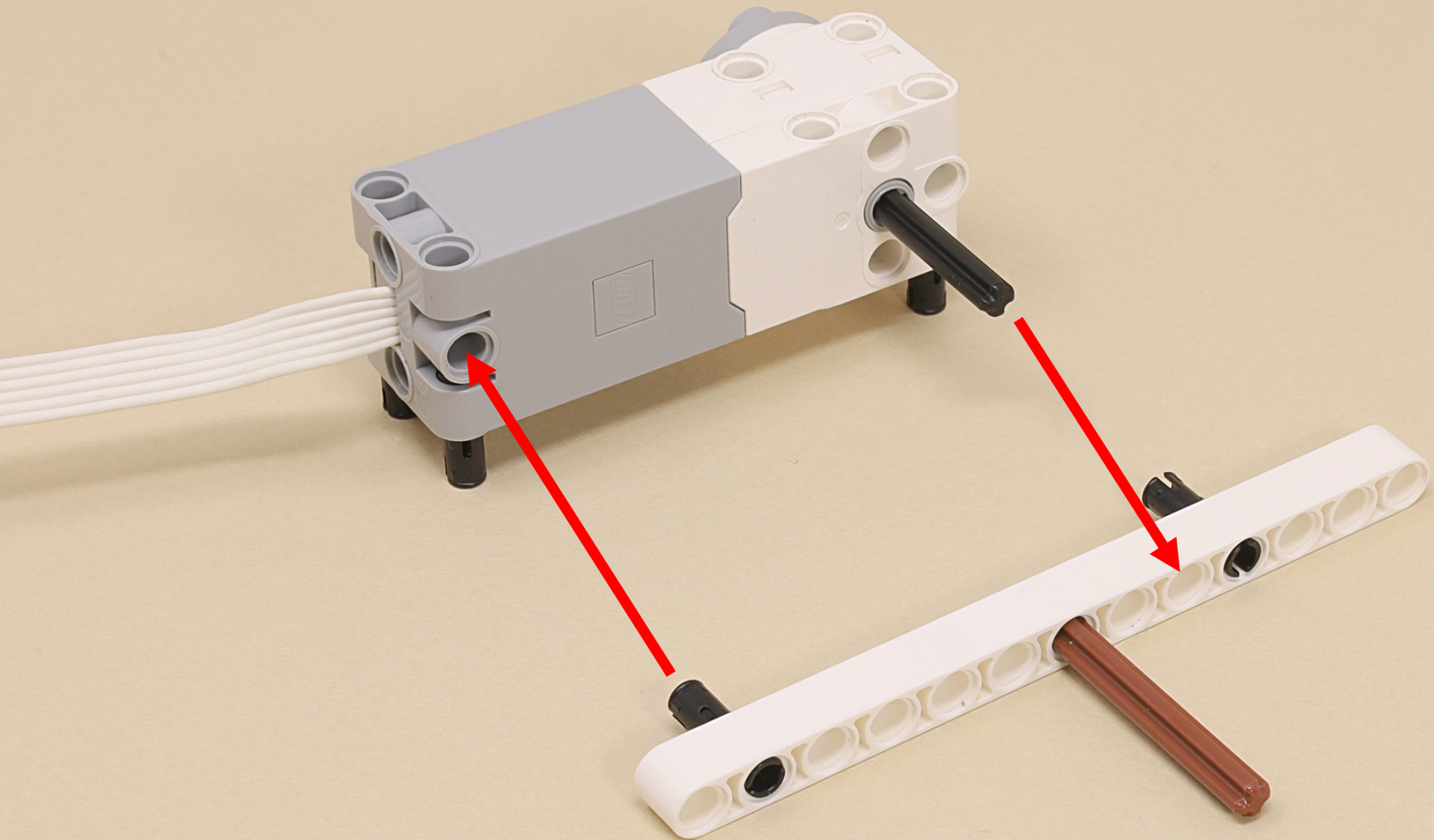
(9 x)

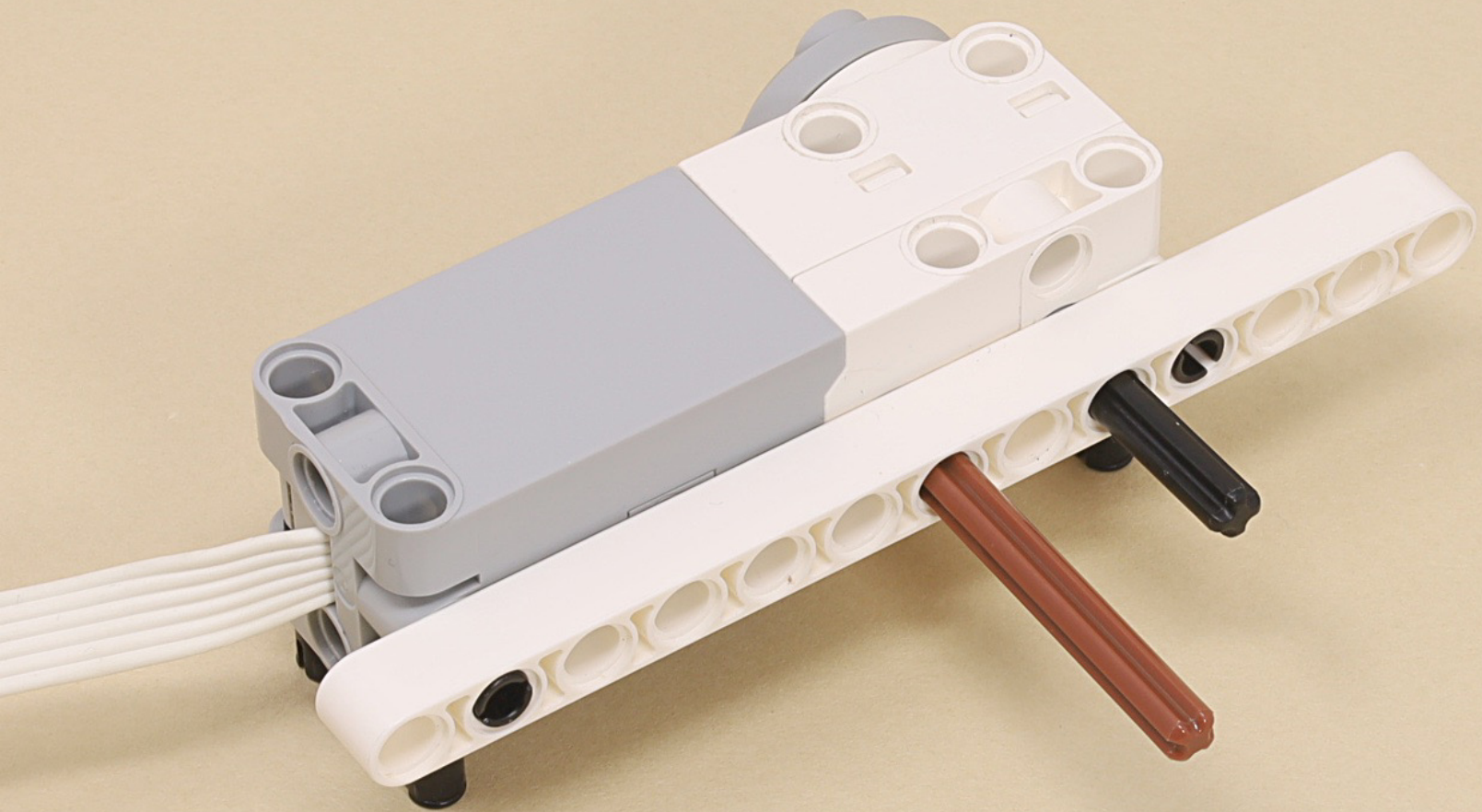


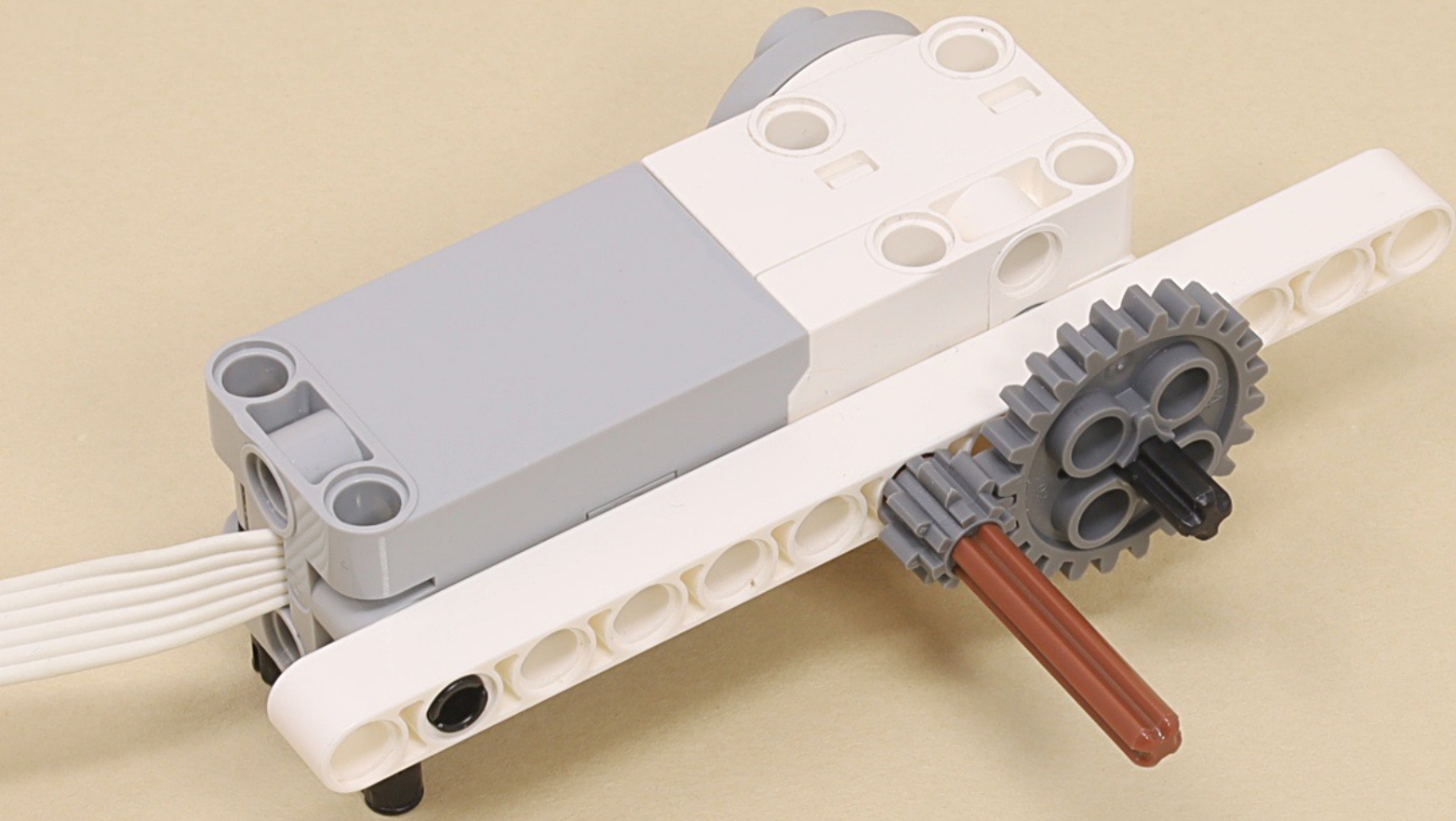


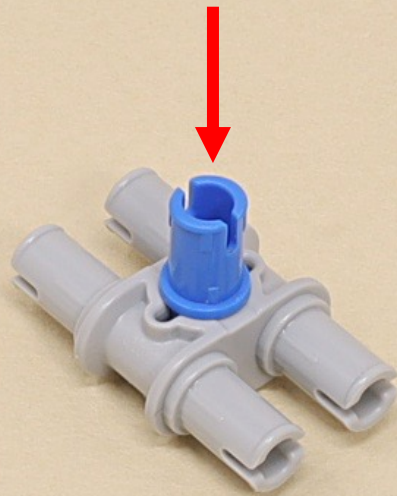


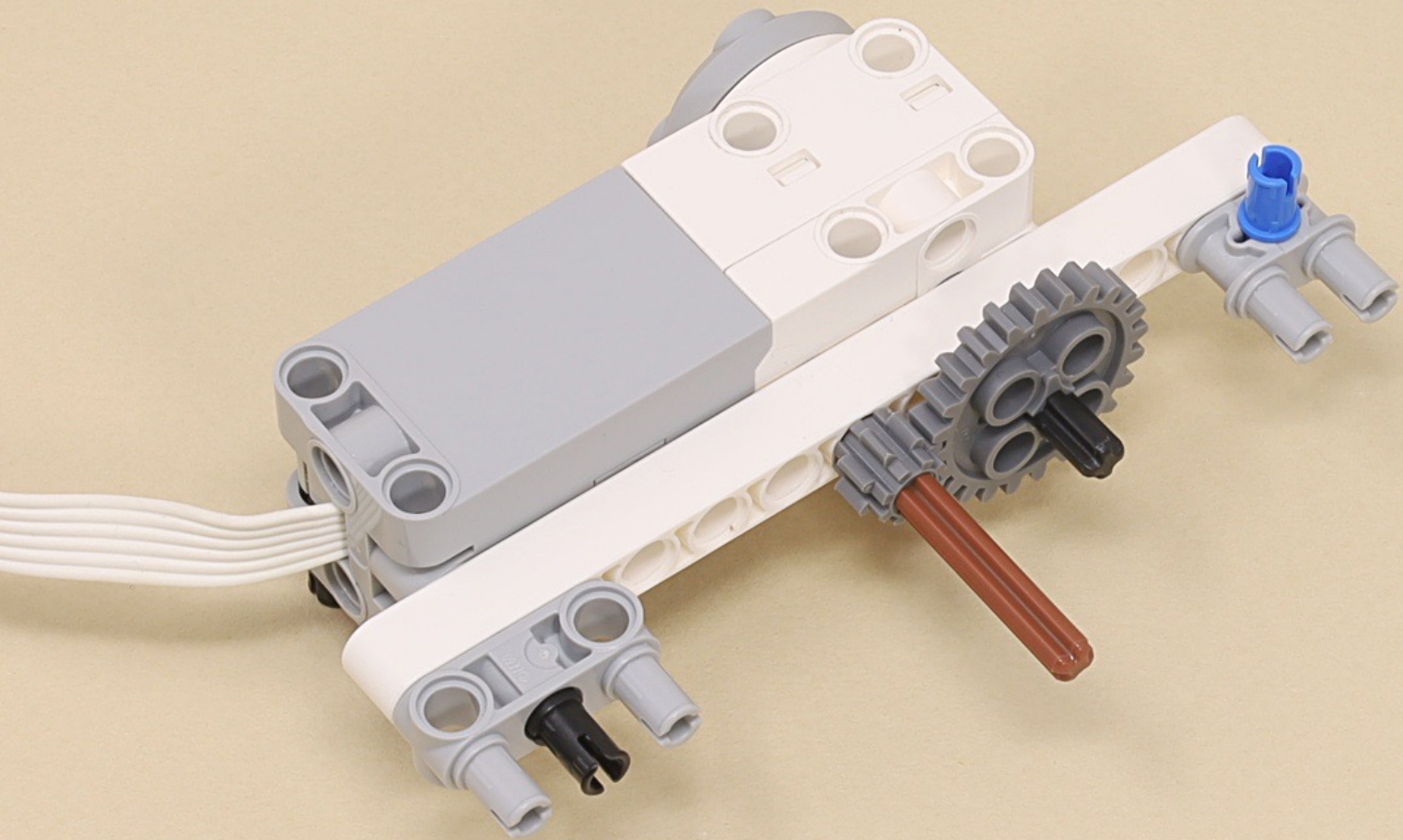


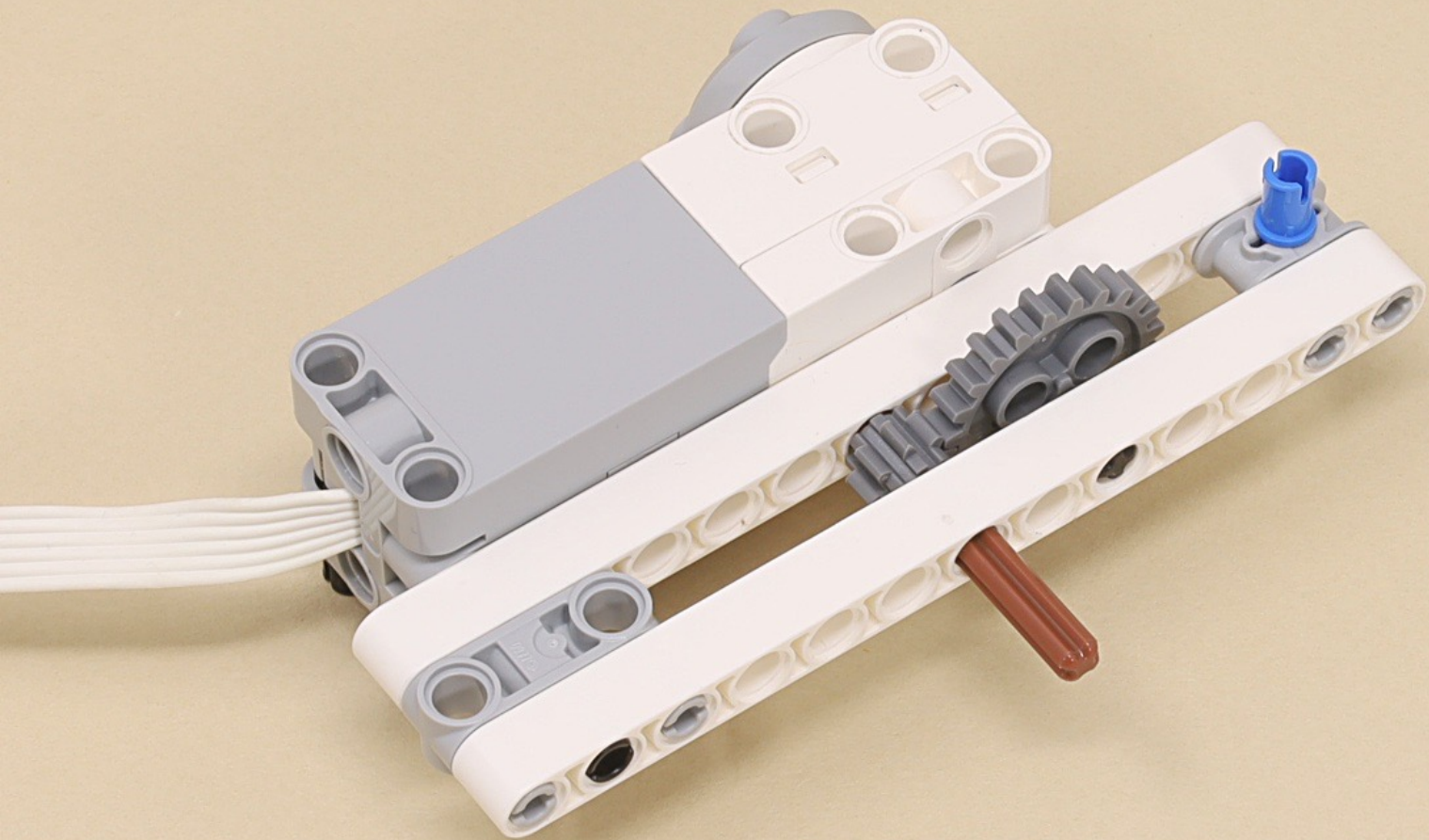






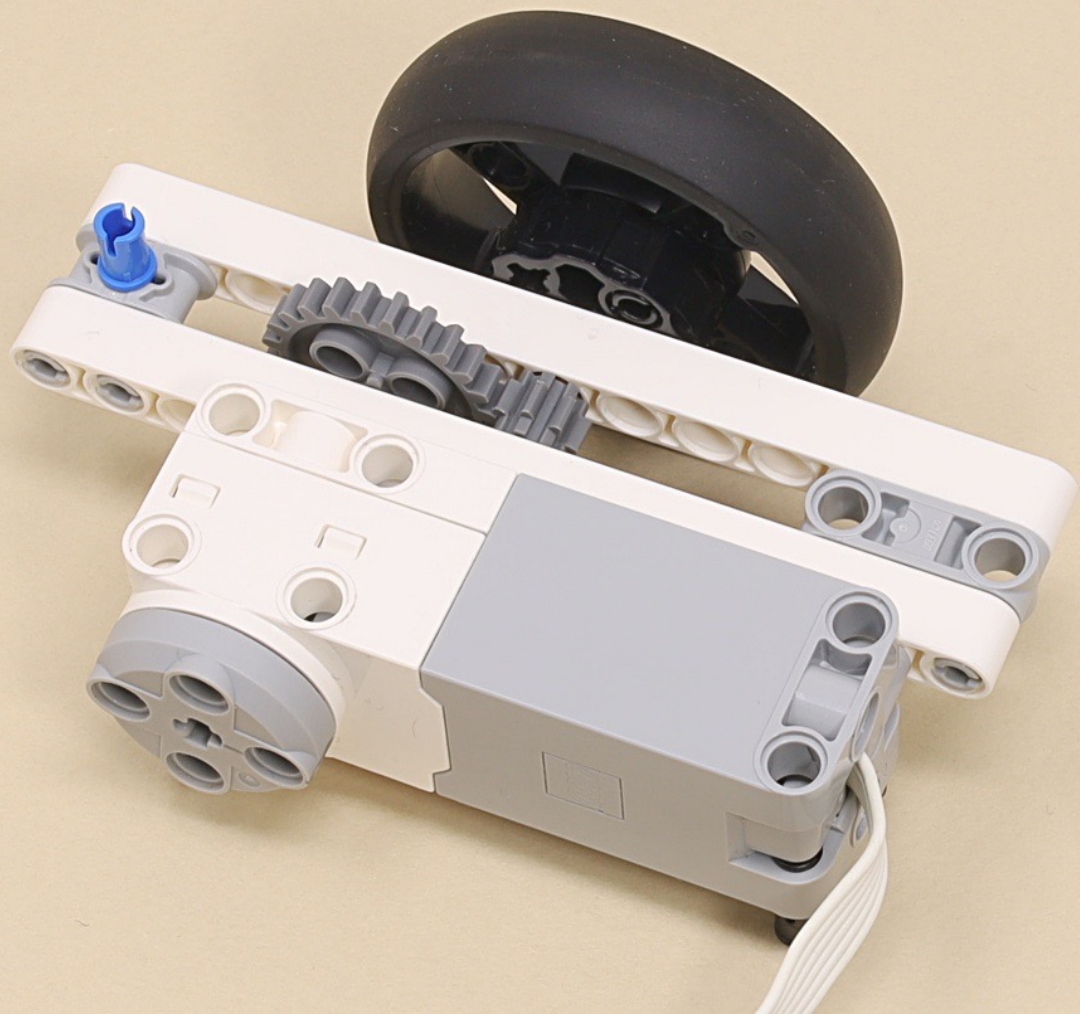


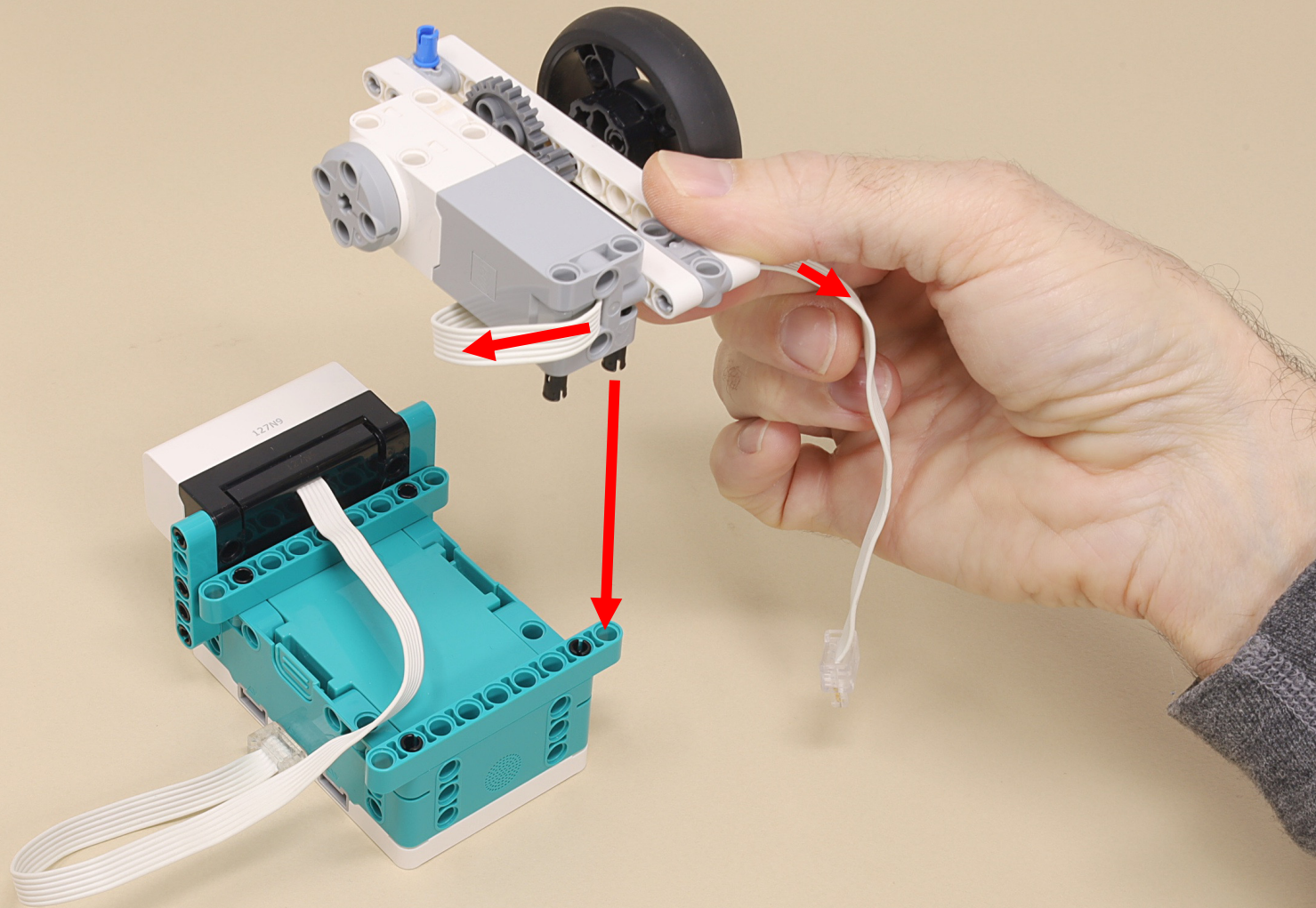


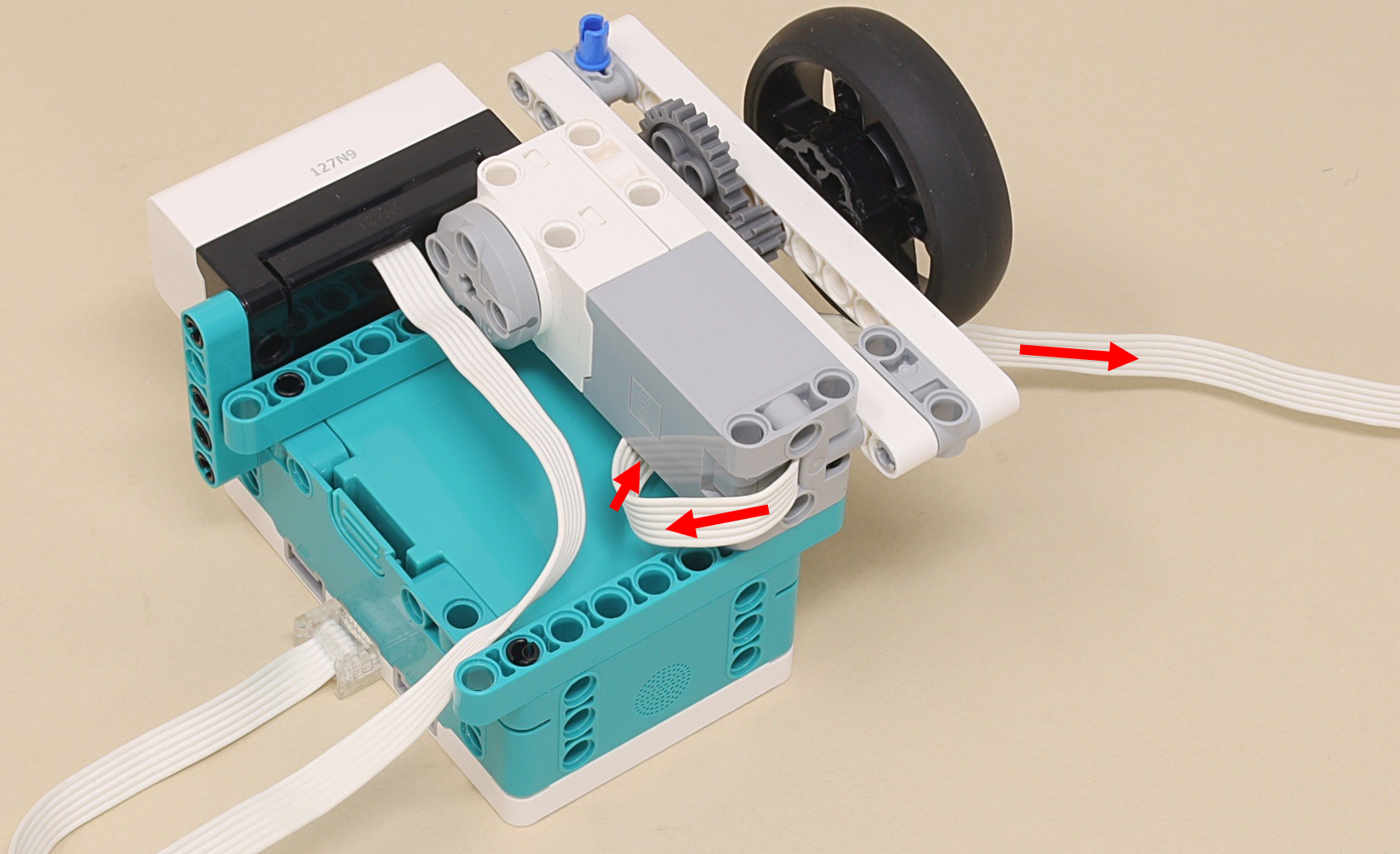














13



13



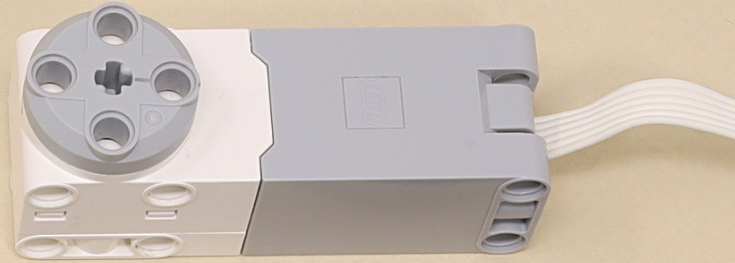
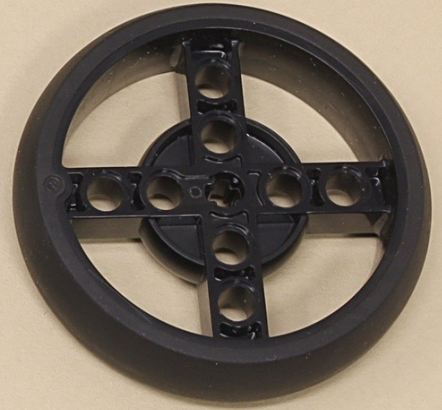
5

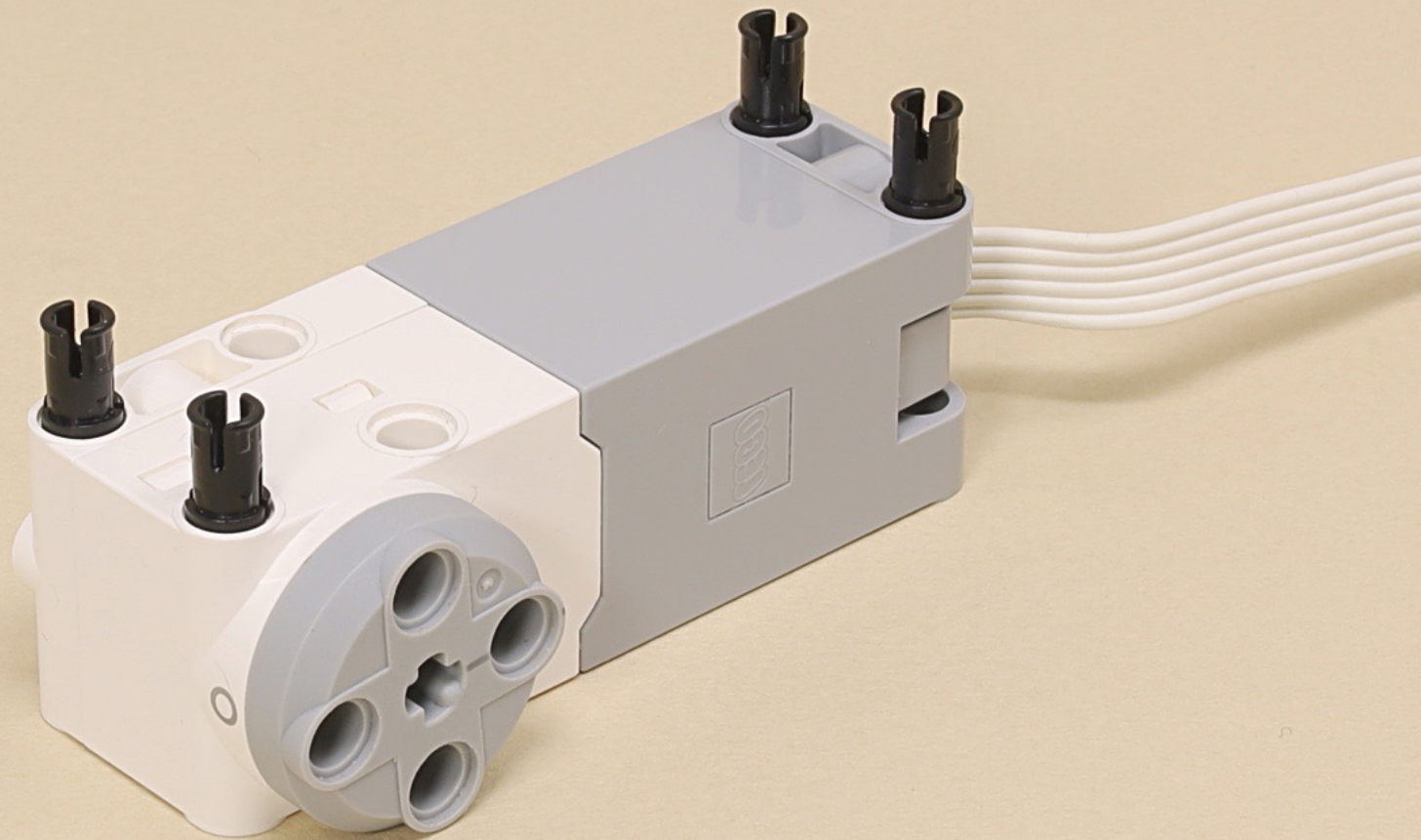


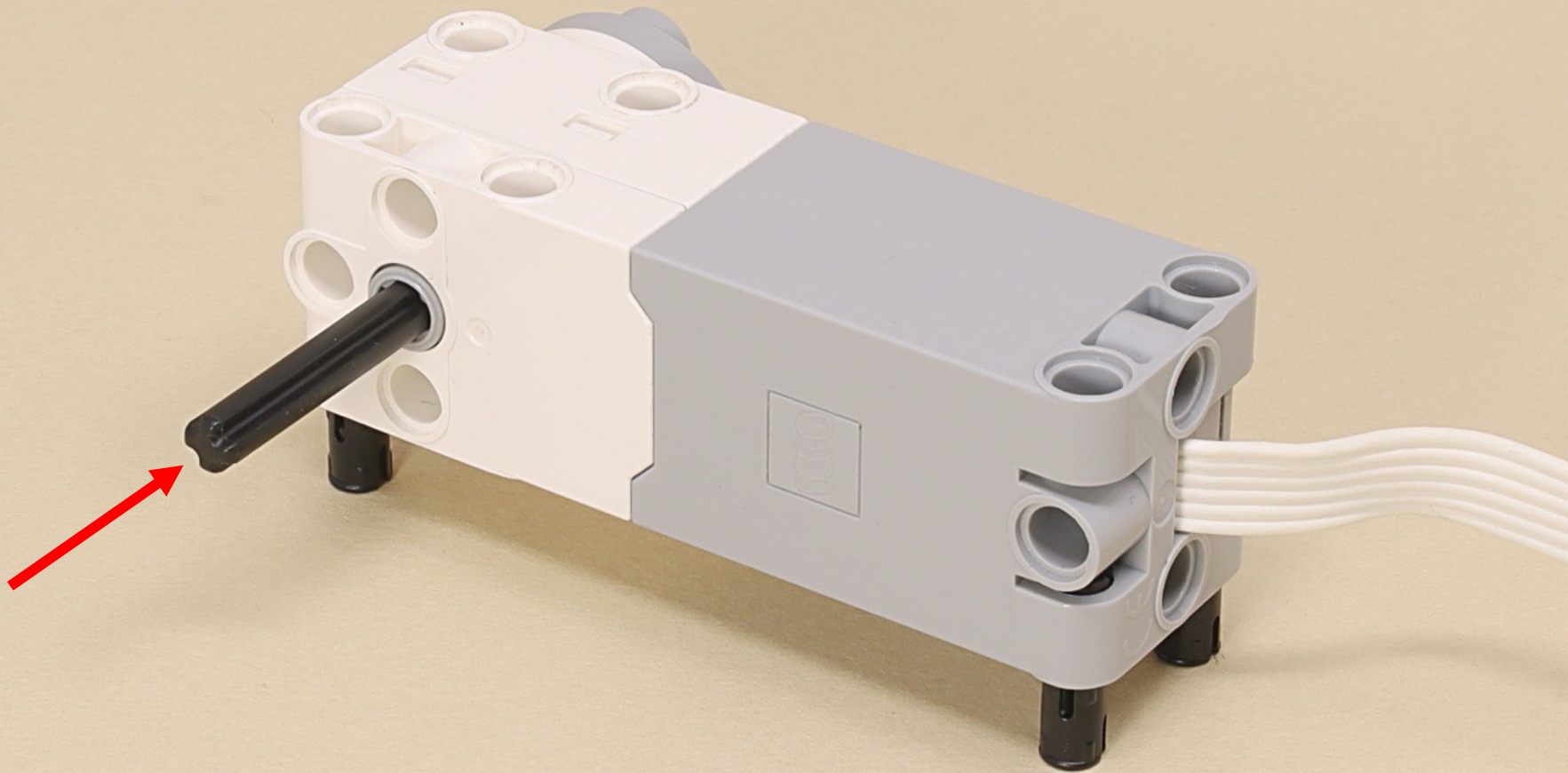
4

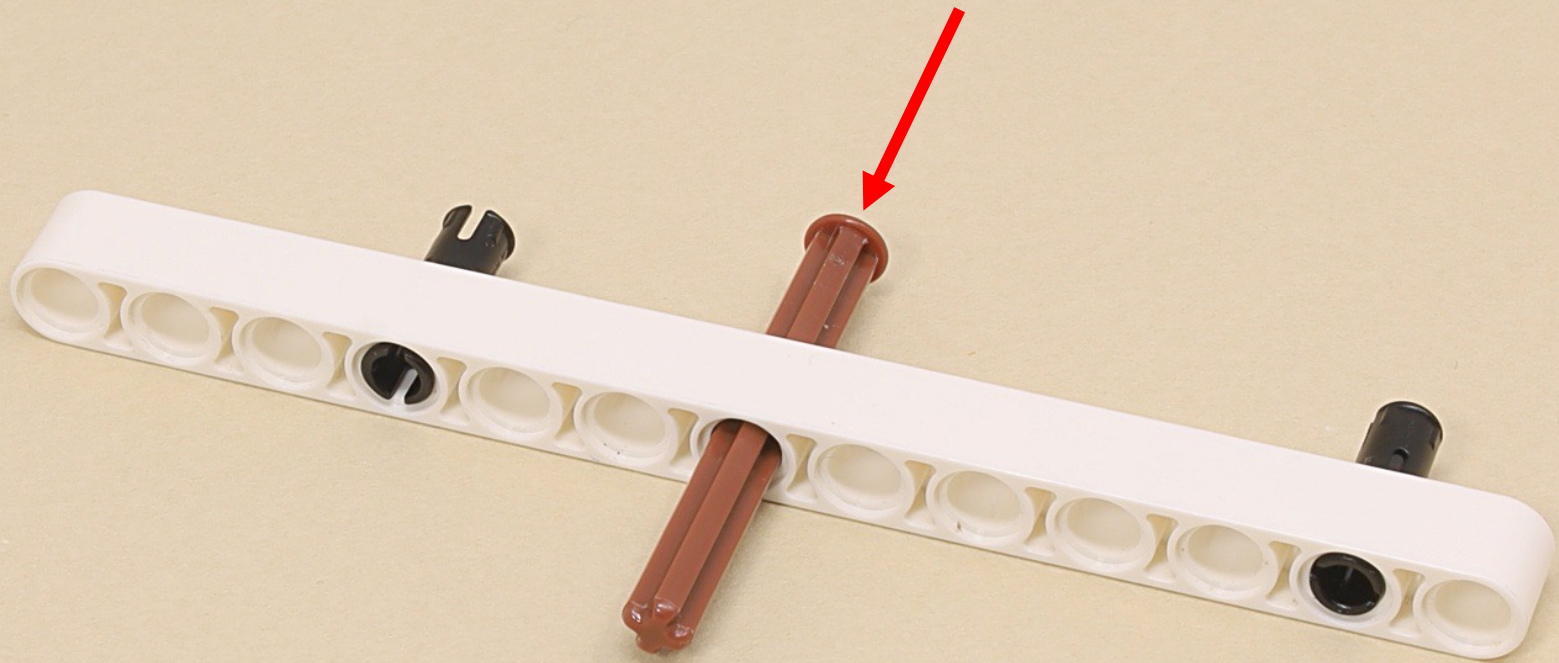


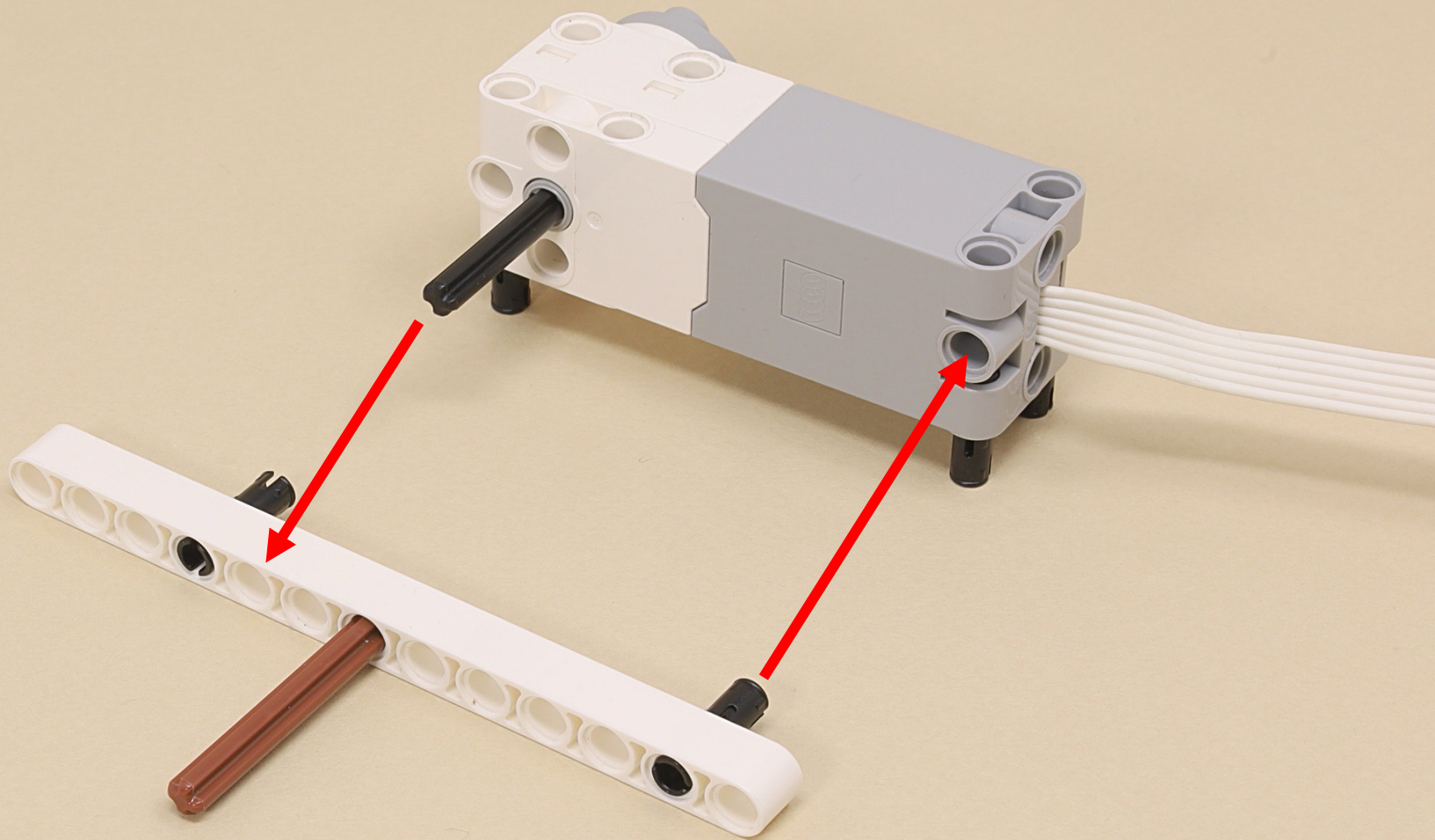
(9 x)

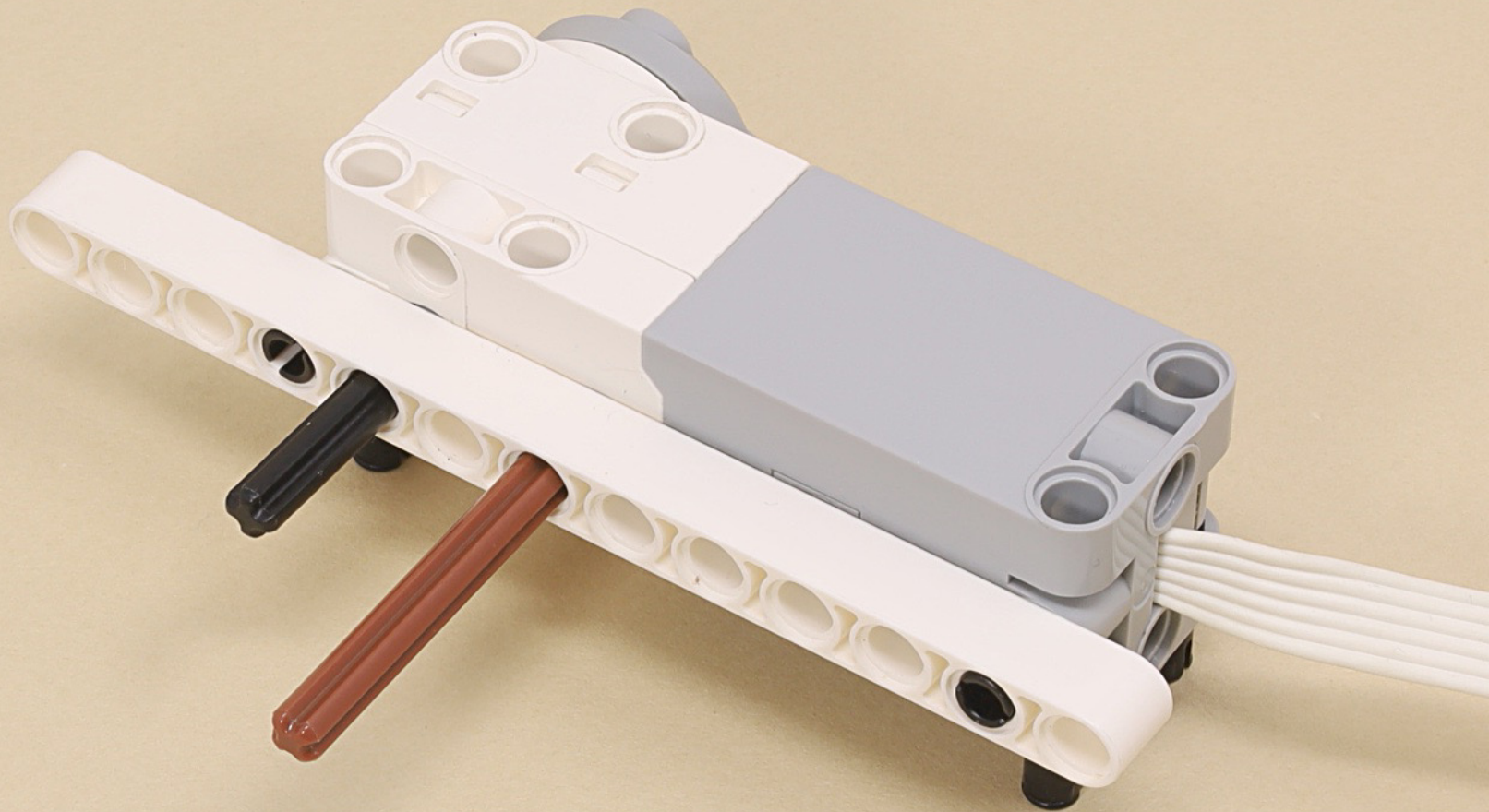


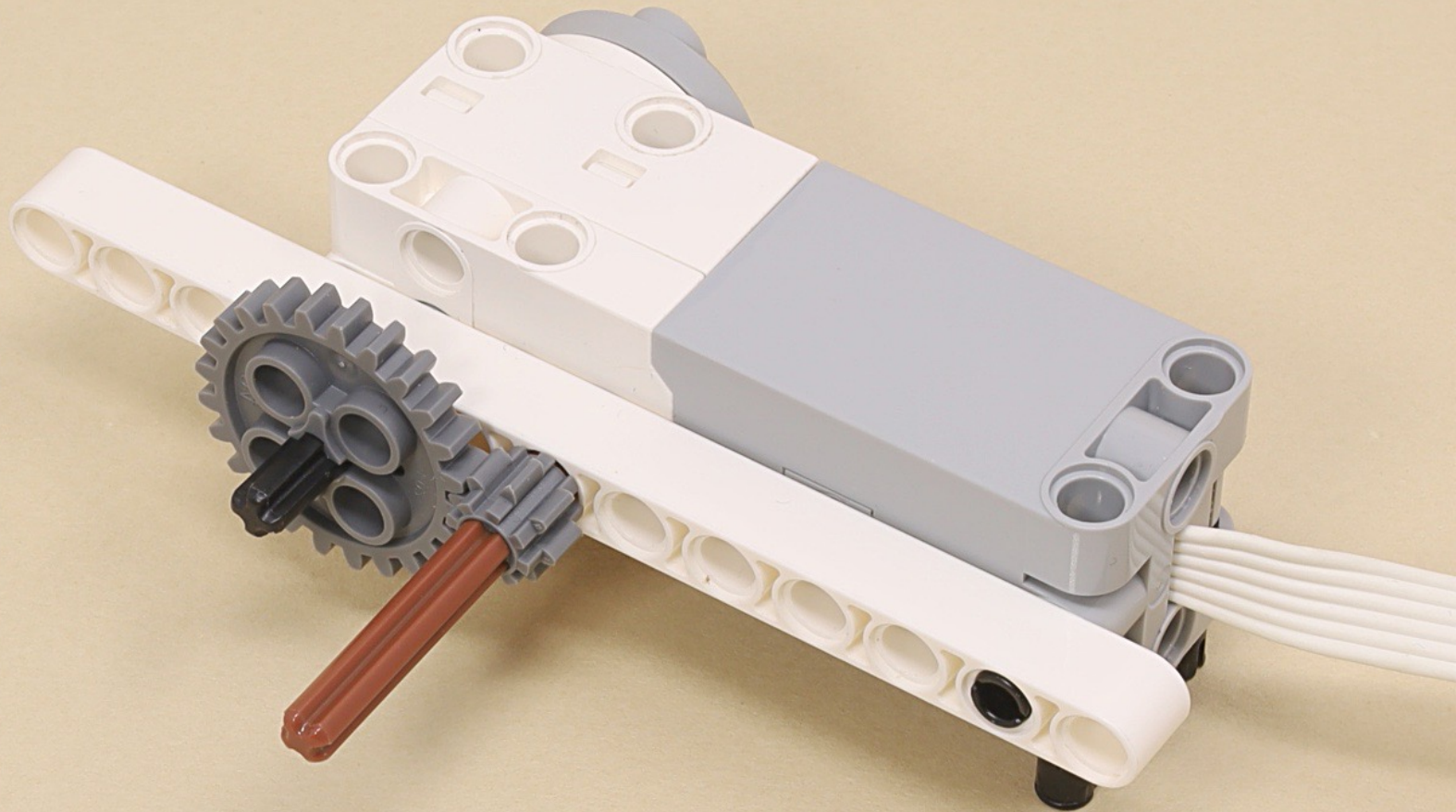


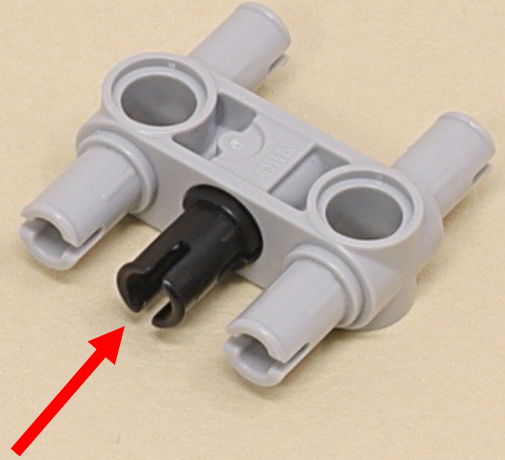
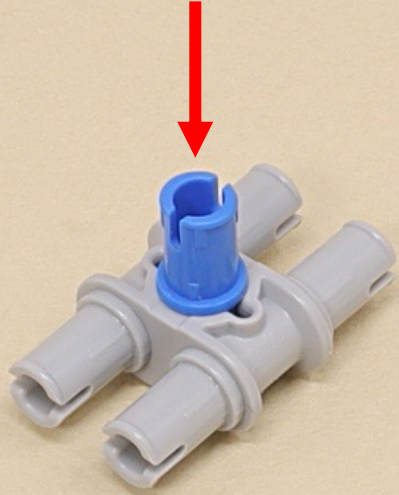


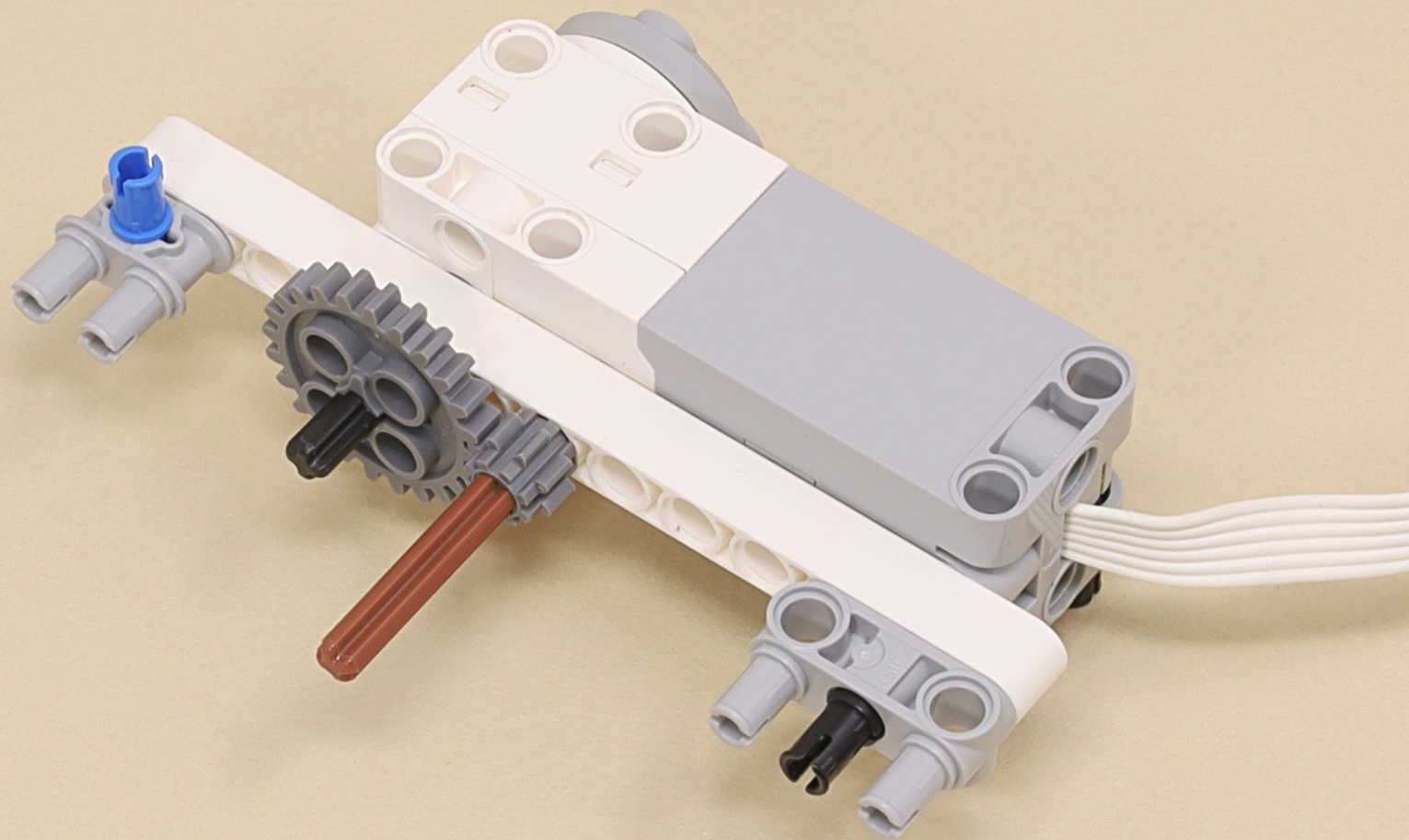








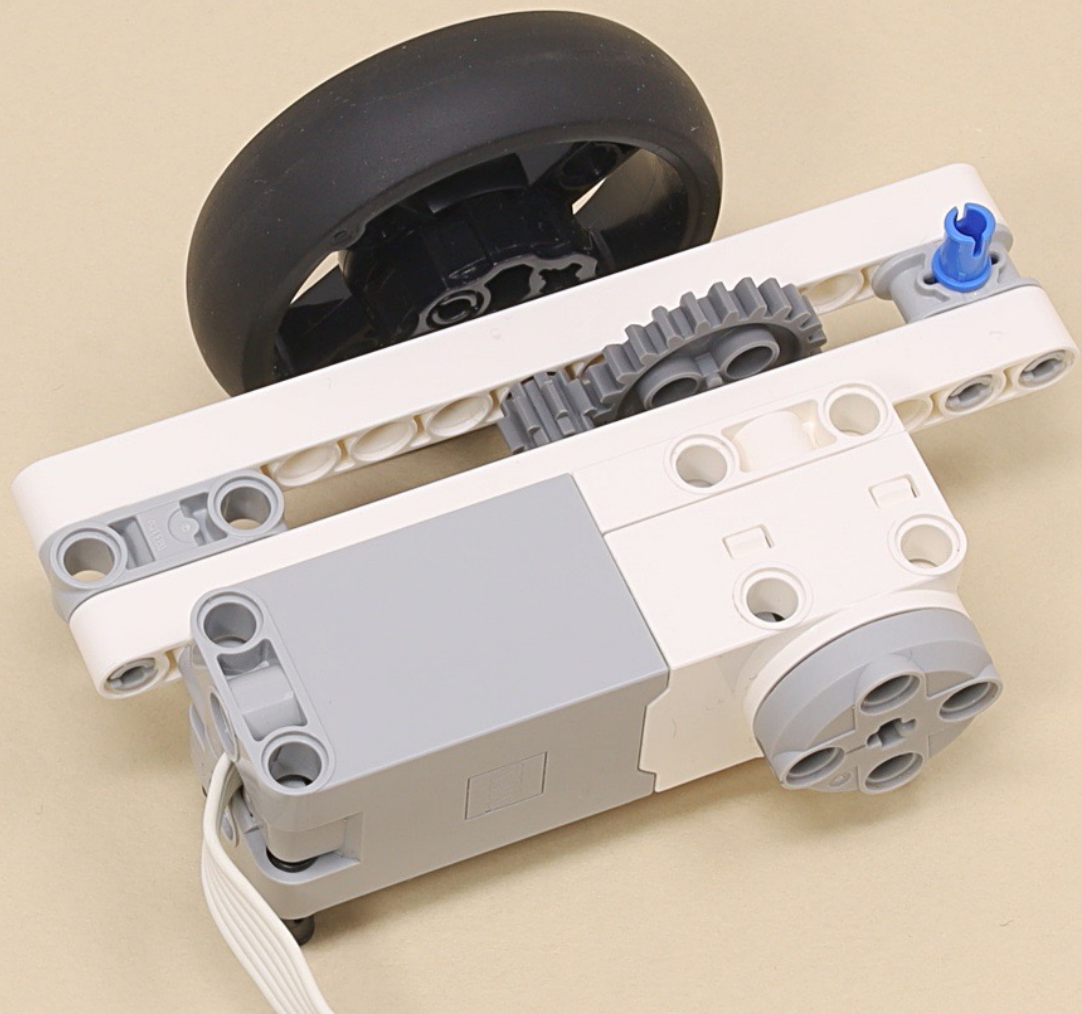


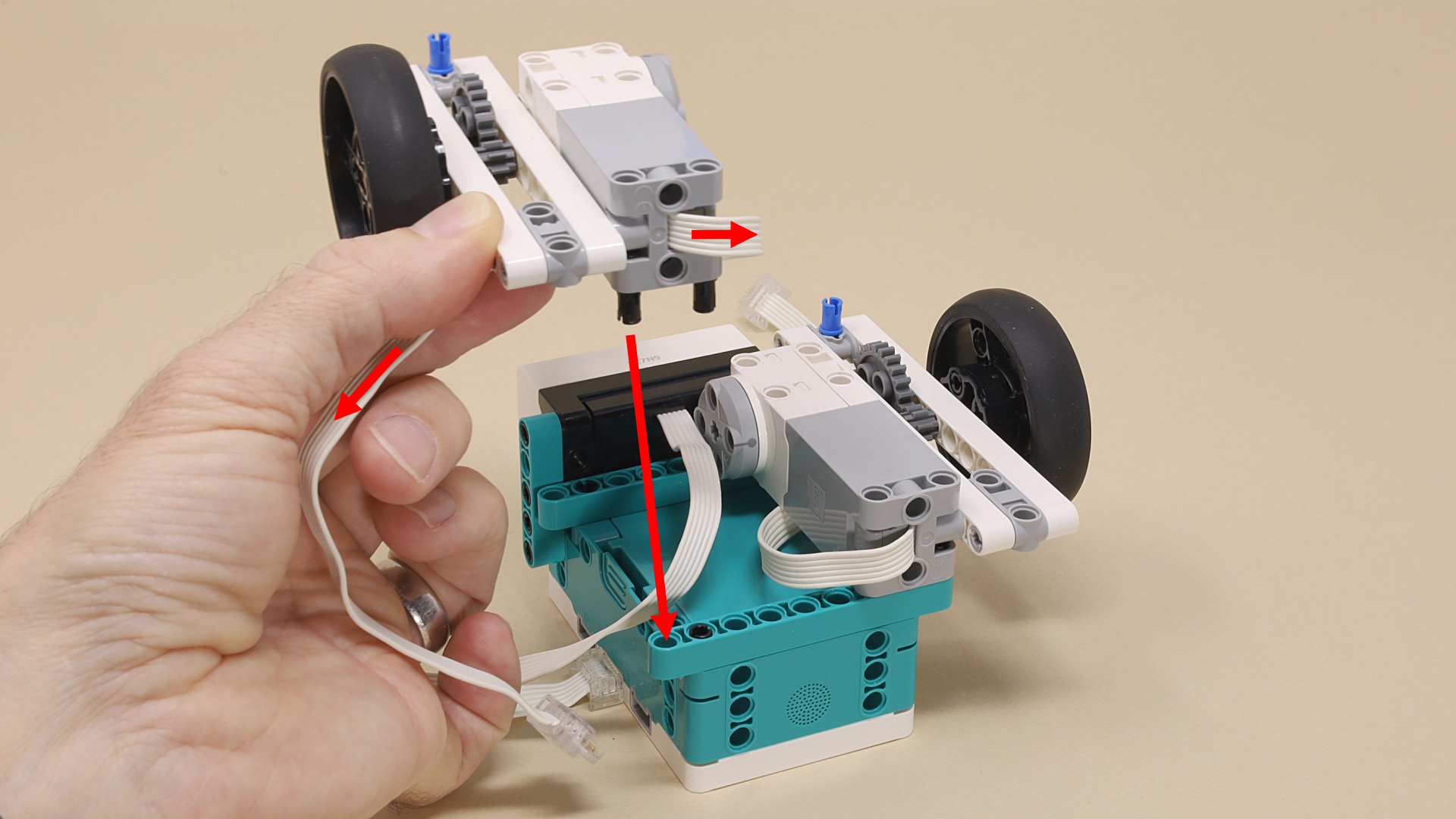


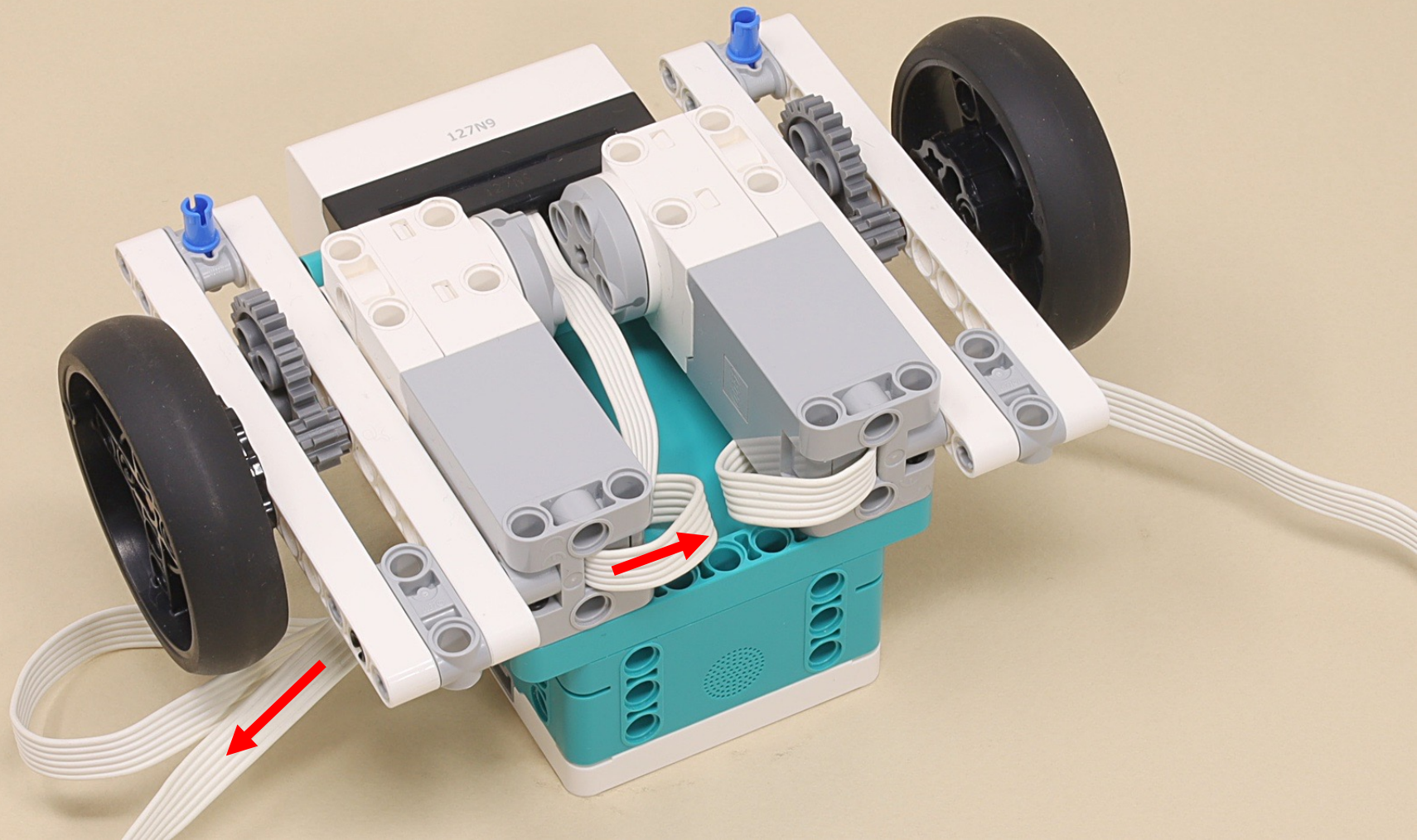






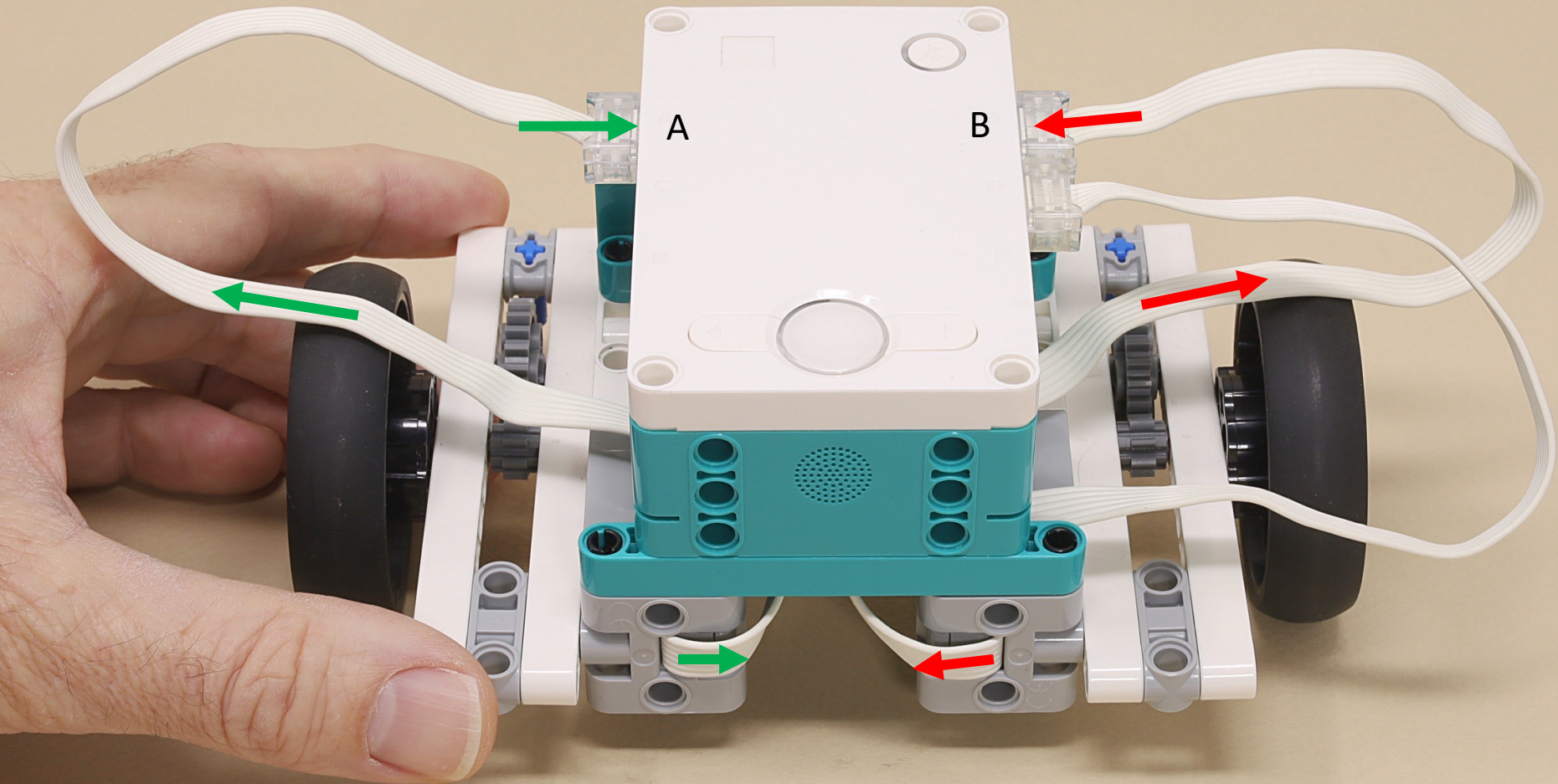




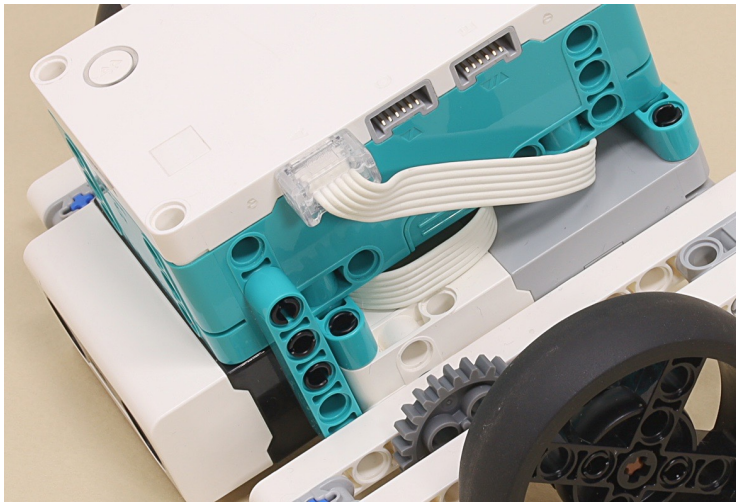
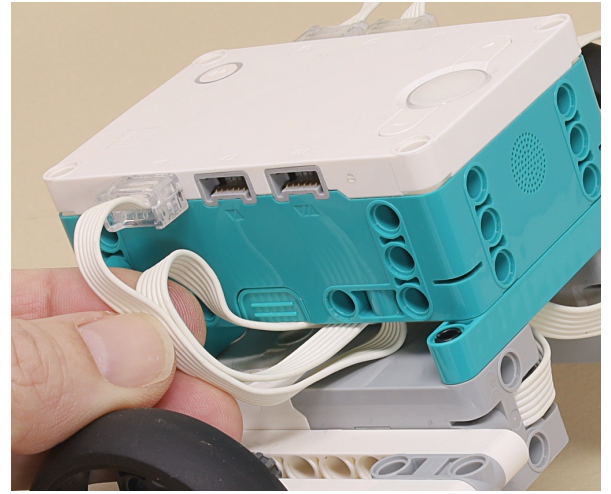
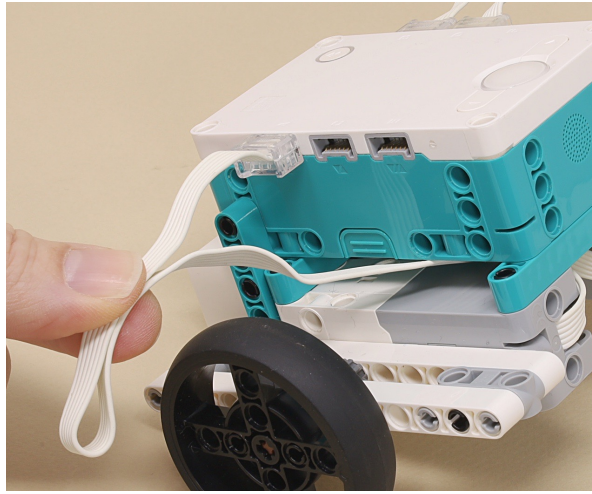


A = Left Motor

B = Right Motor



You can fold and stuff the extra wire lengths under the hub.





9

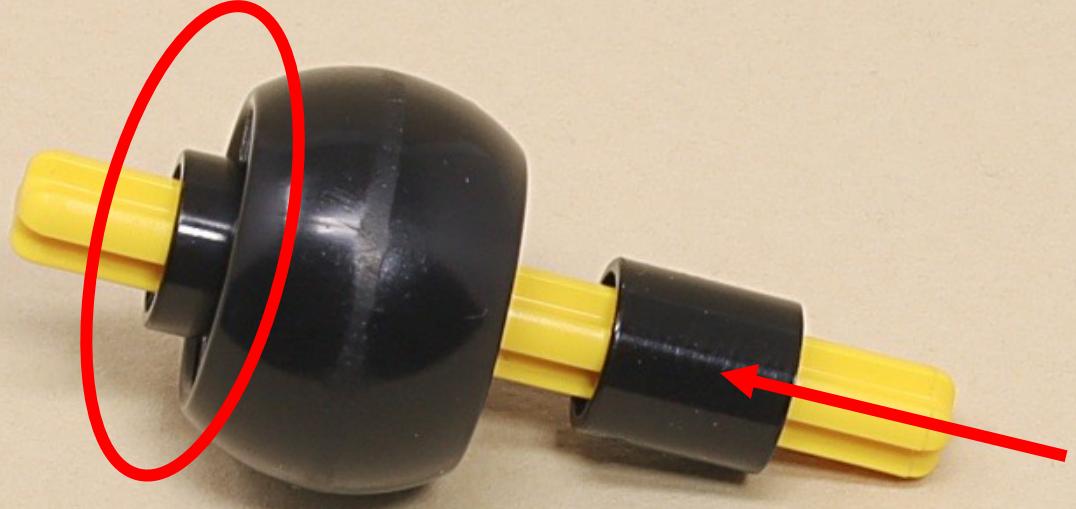


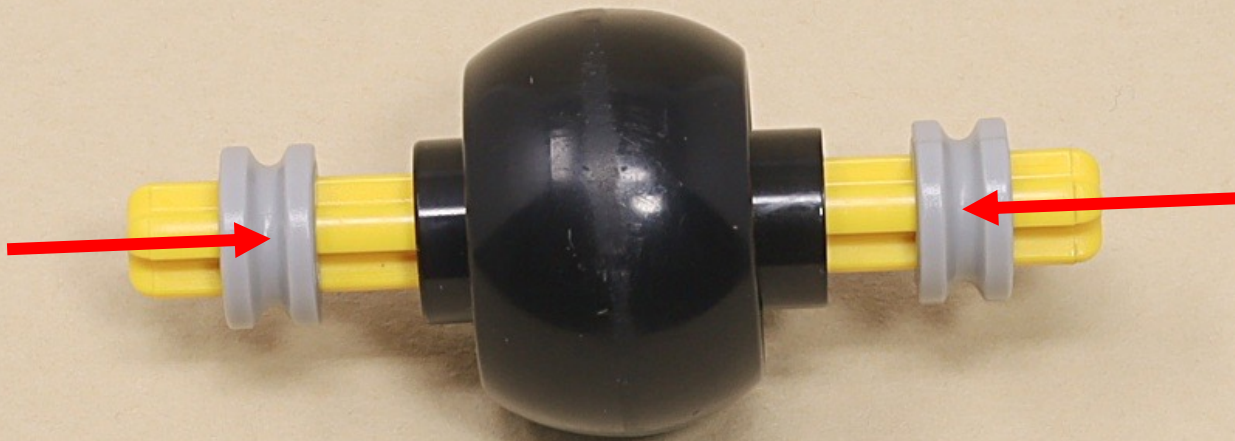
5



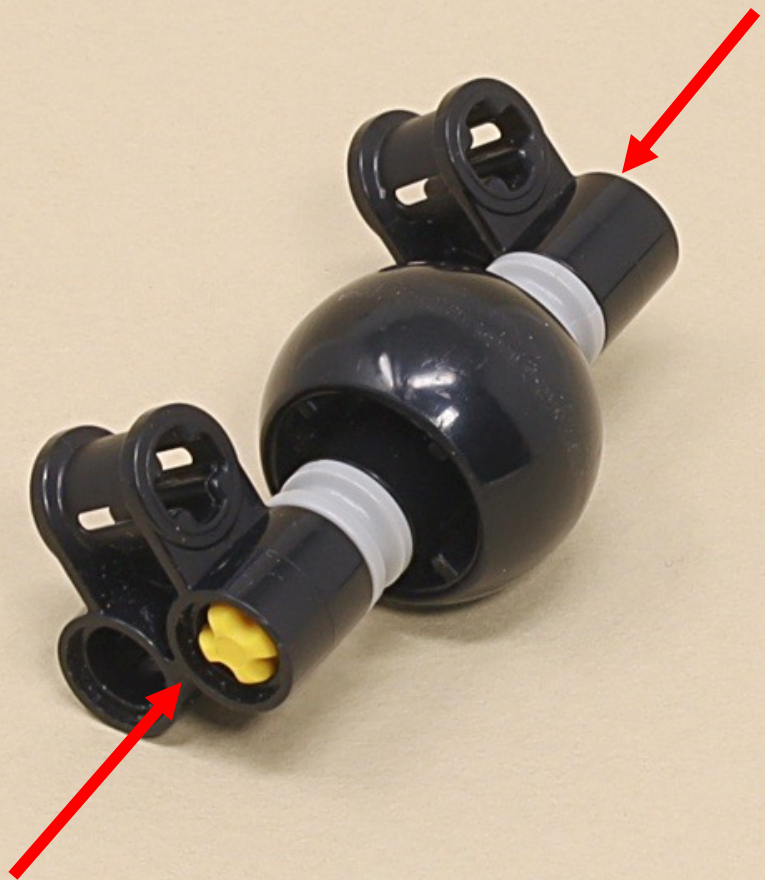
(6 x)

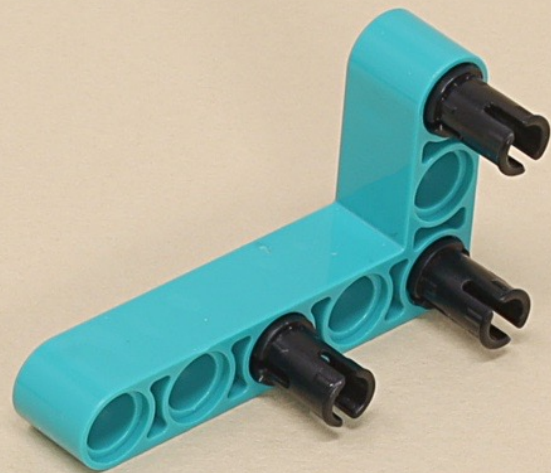
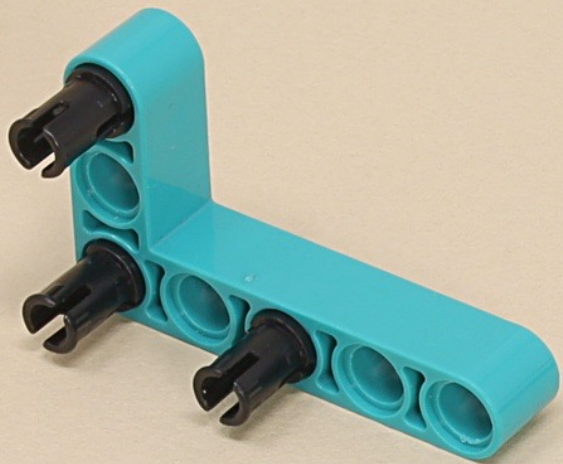


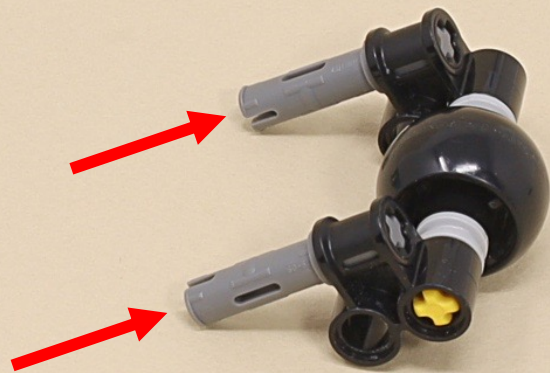
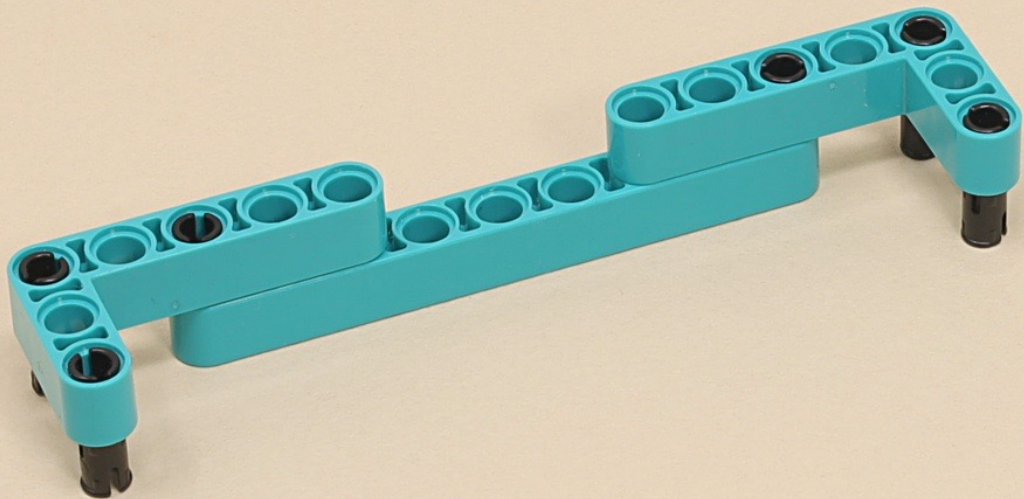


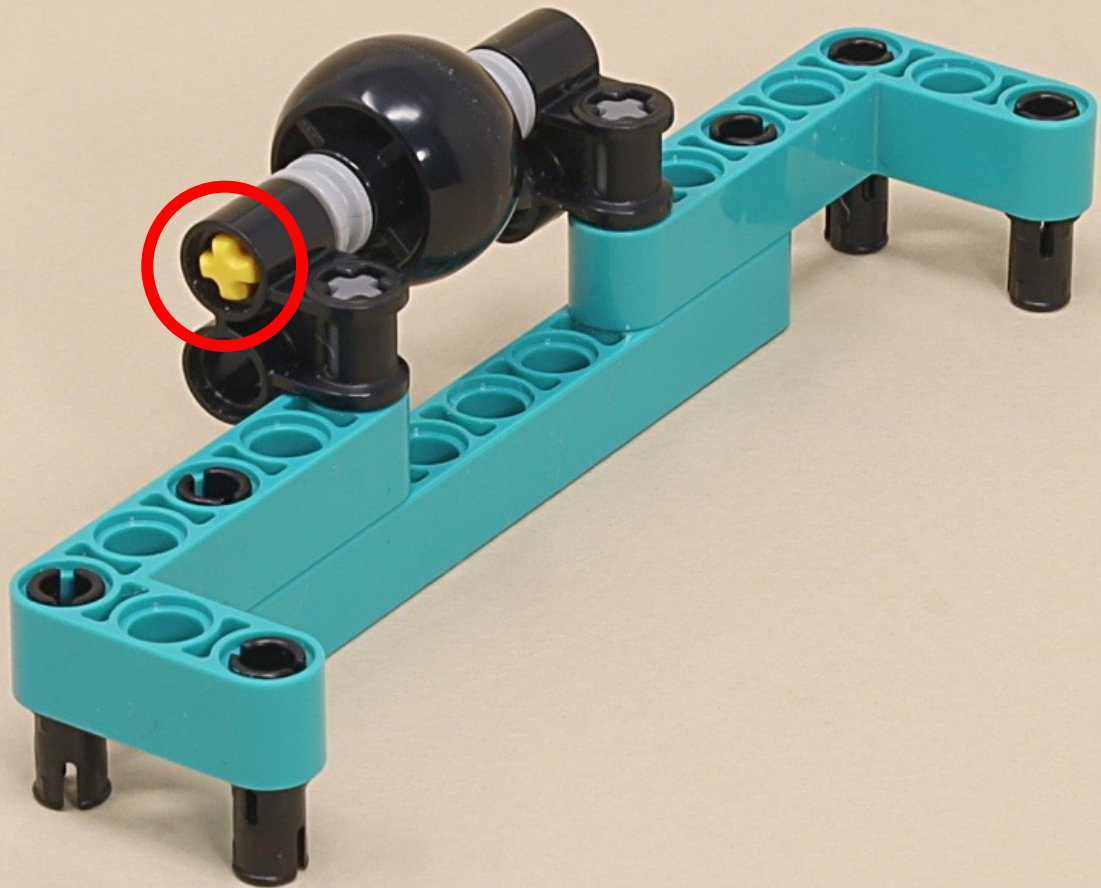


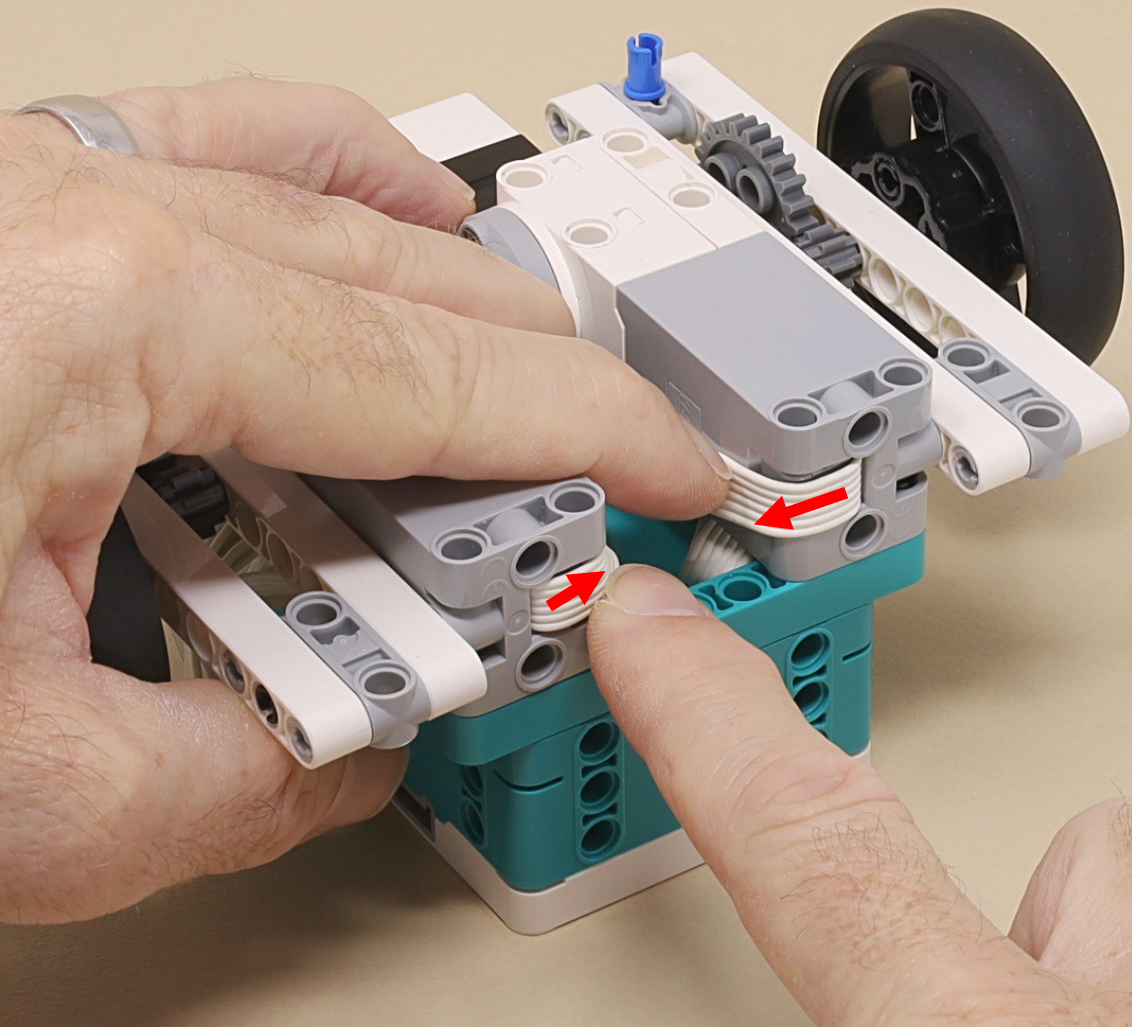




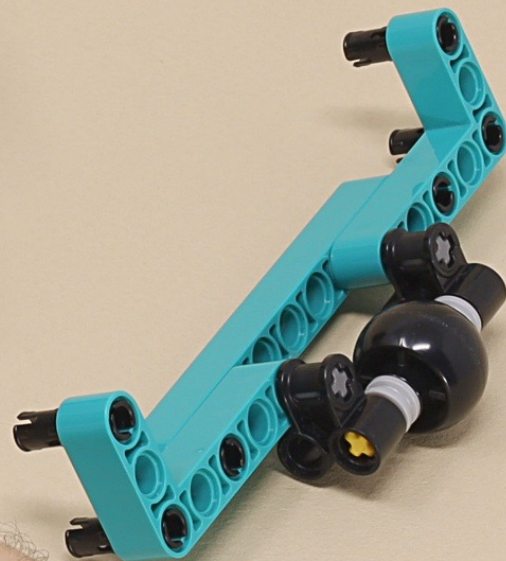


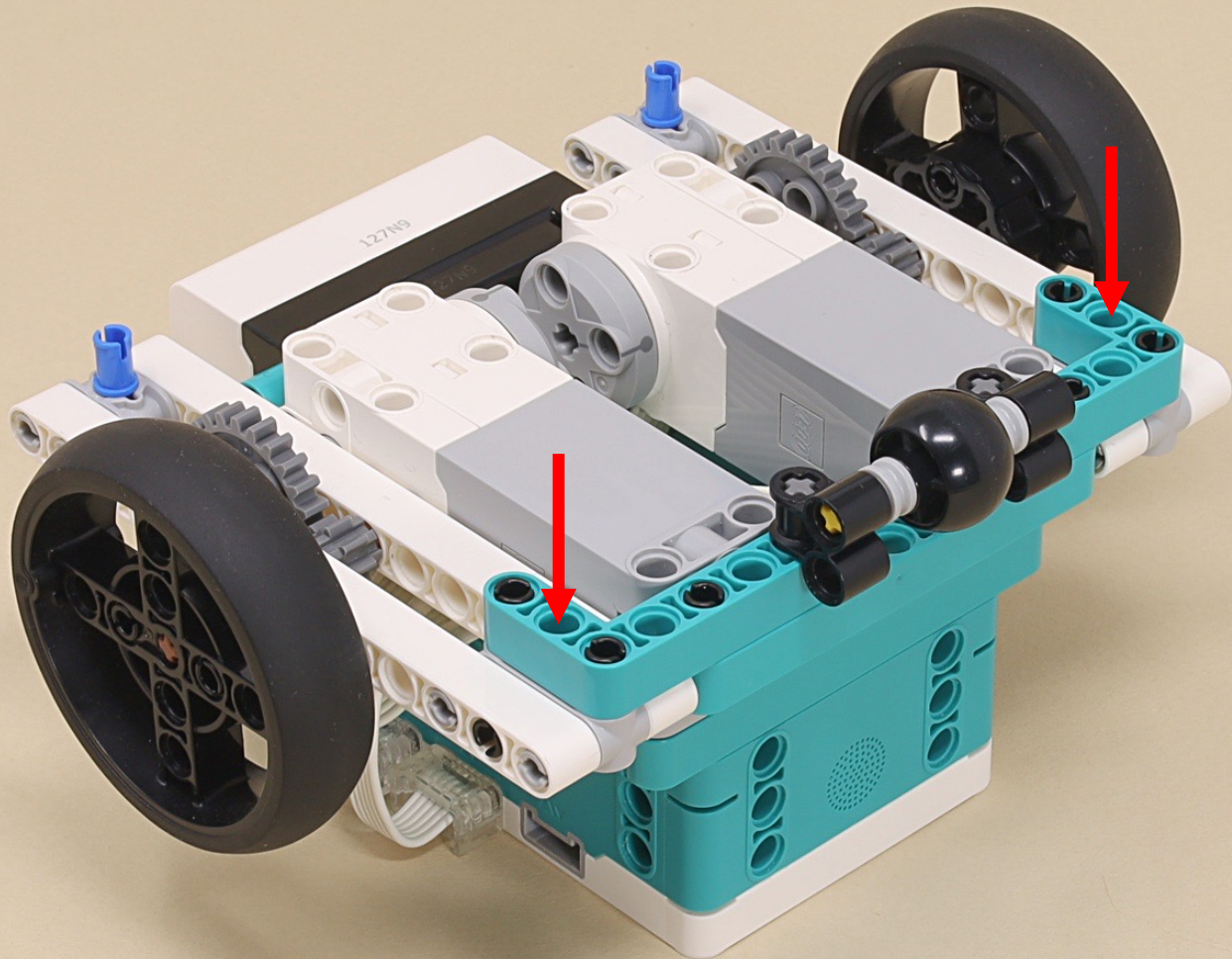






Push both motor wires
all the way up against
the motors.



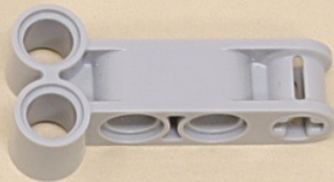
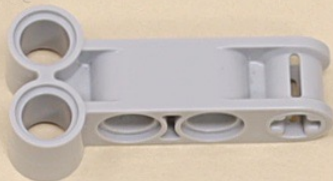




13



4



3



3



