

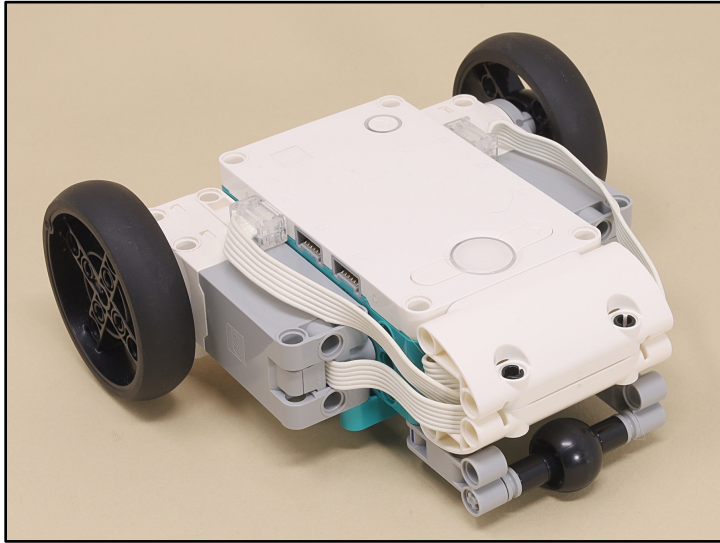
# Hammer Car



Scroll for  
building  
instructions



First, build:



Front Drive Platform

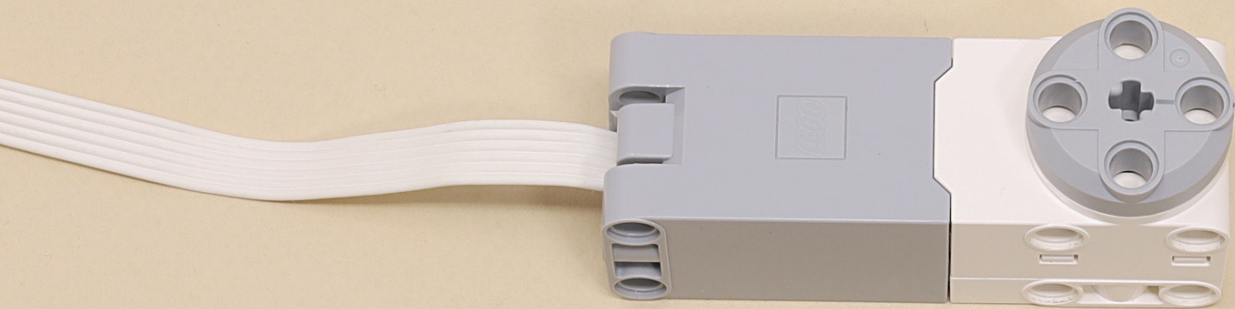
and



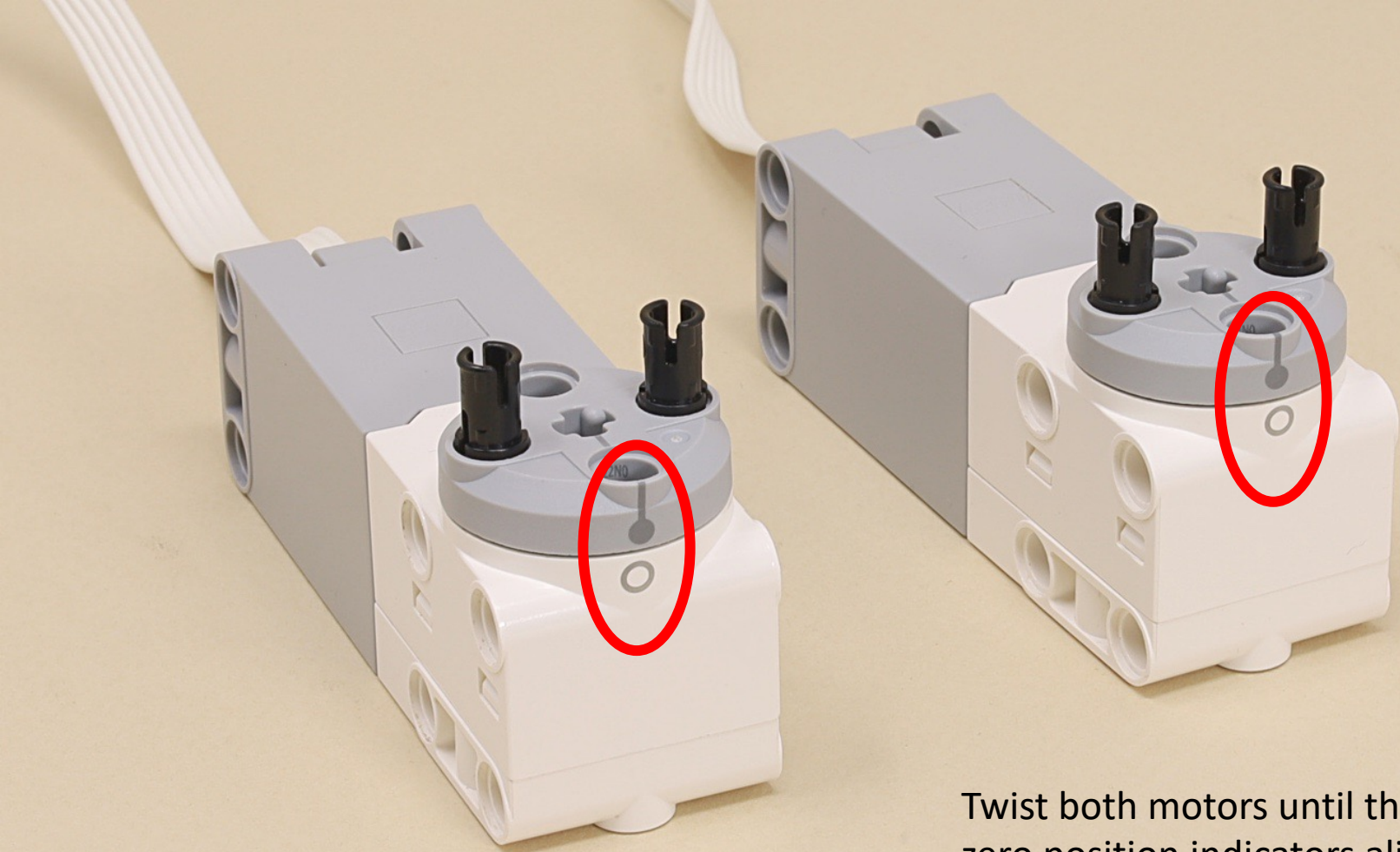
Hammer for Hammer Car

...then continue here for the final assembly of the Hammer Car









Twist both motors until the zero position indicators align.



9

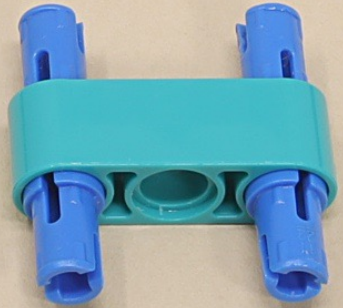
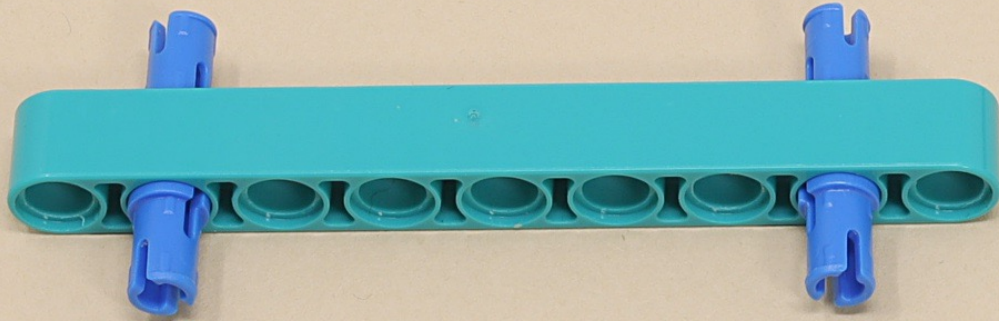
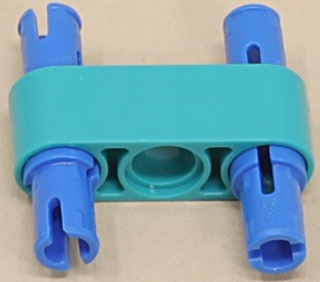
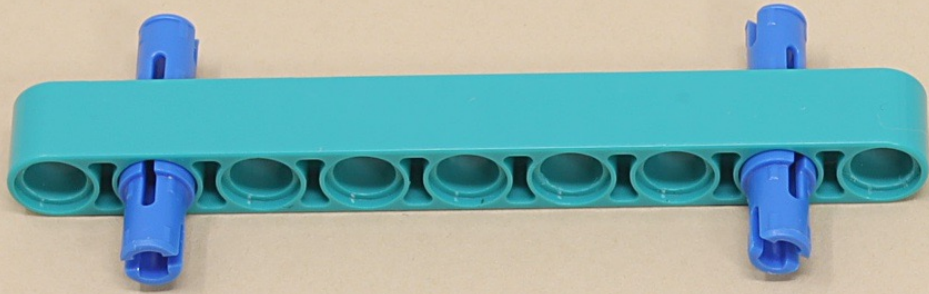


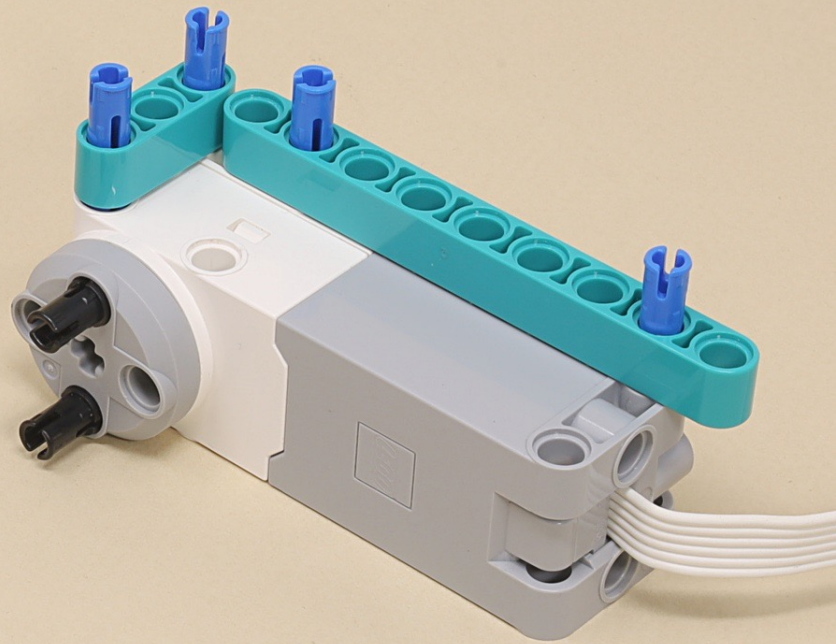
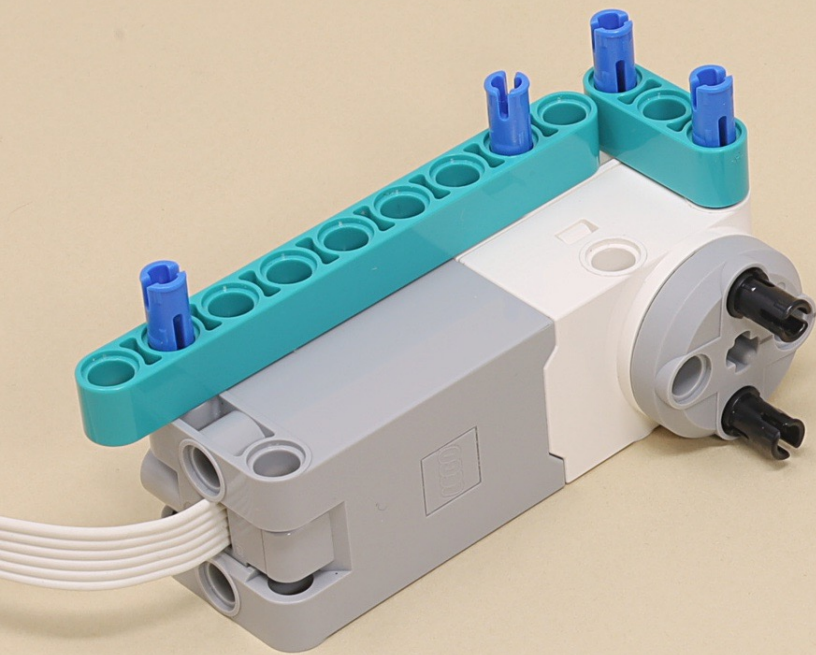
9



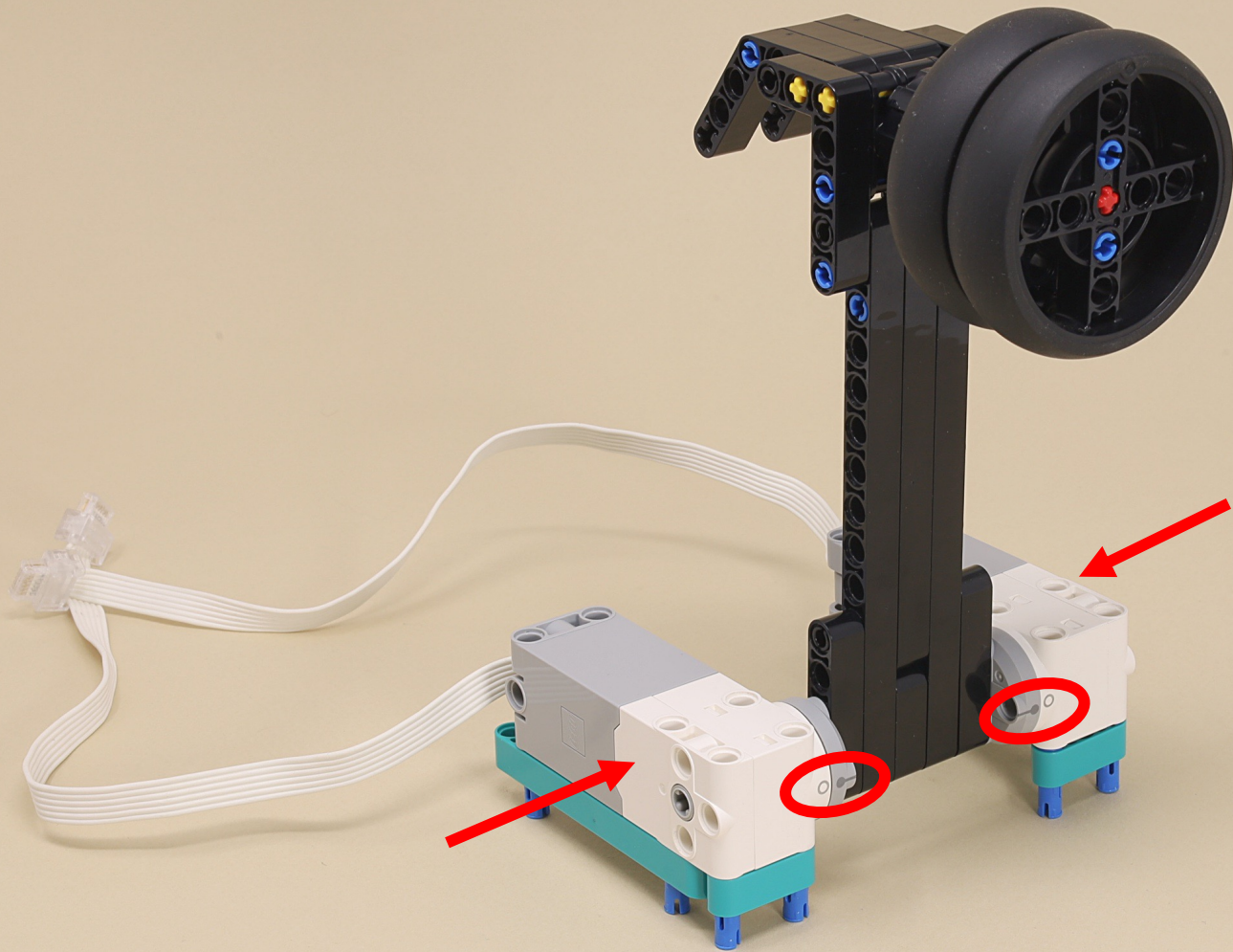
(8 x)





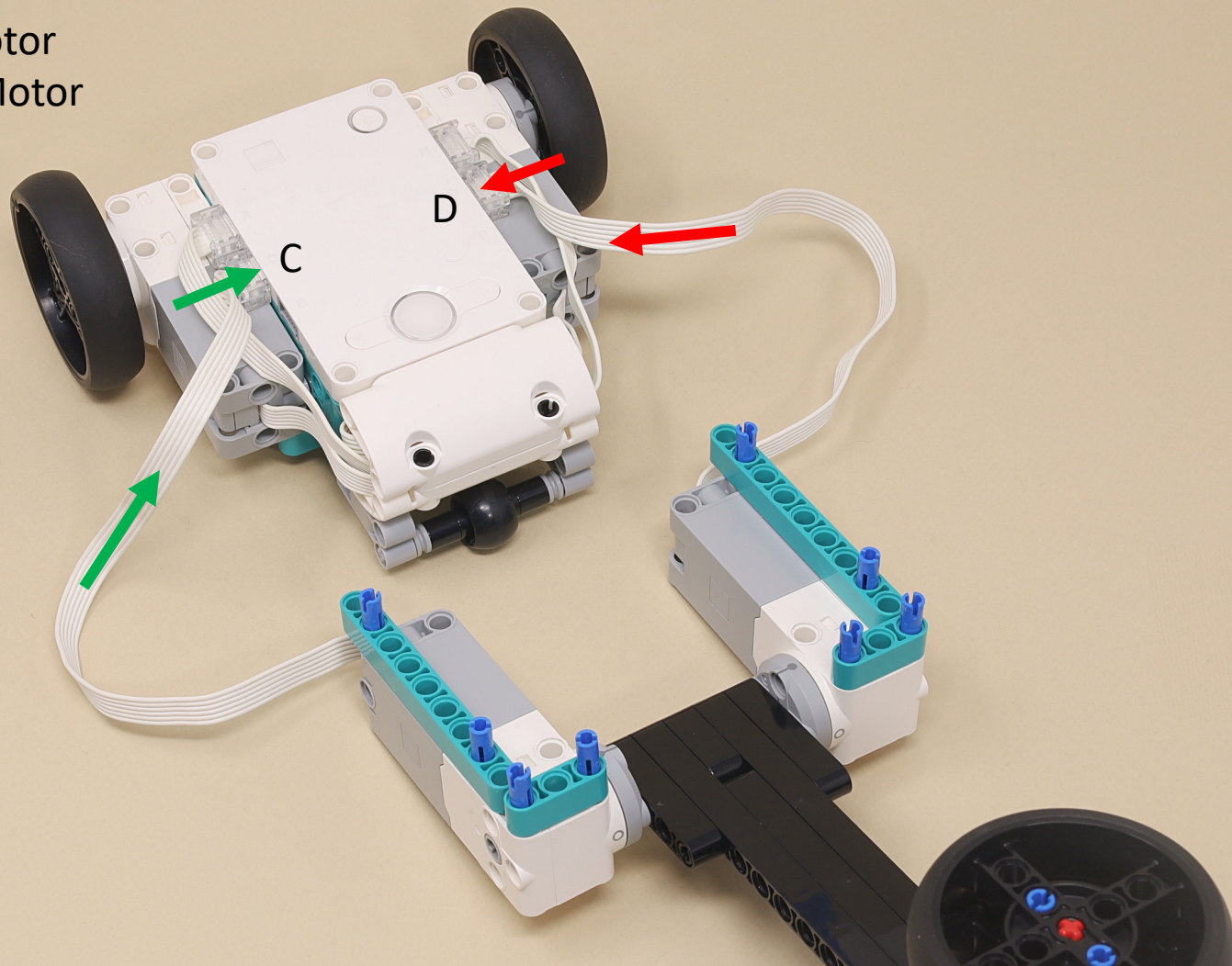




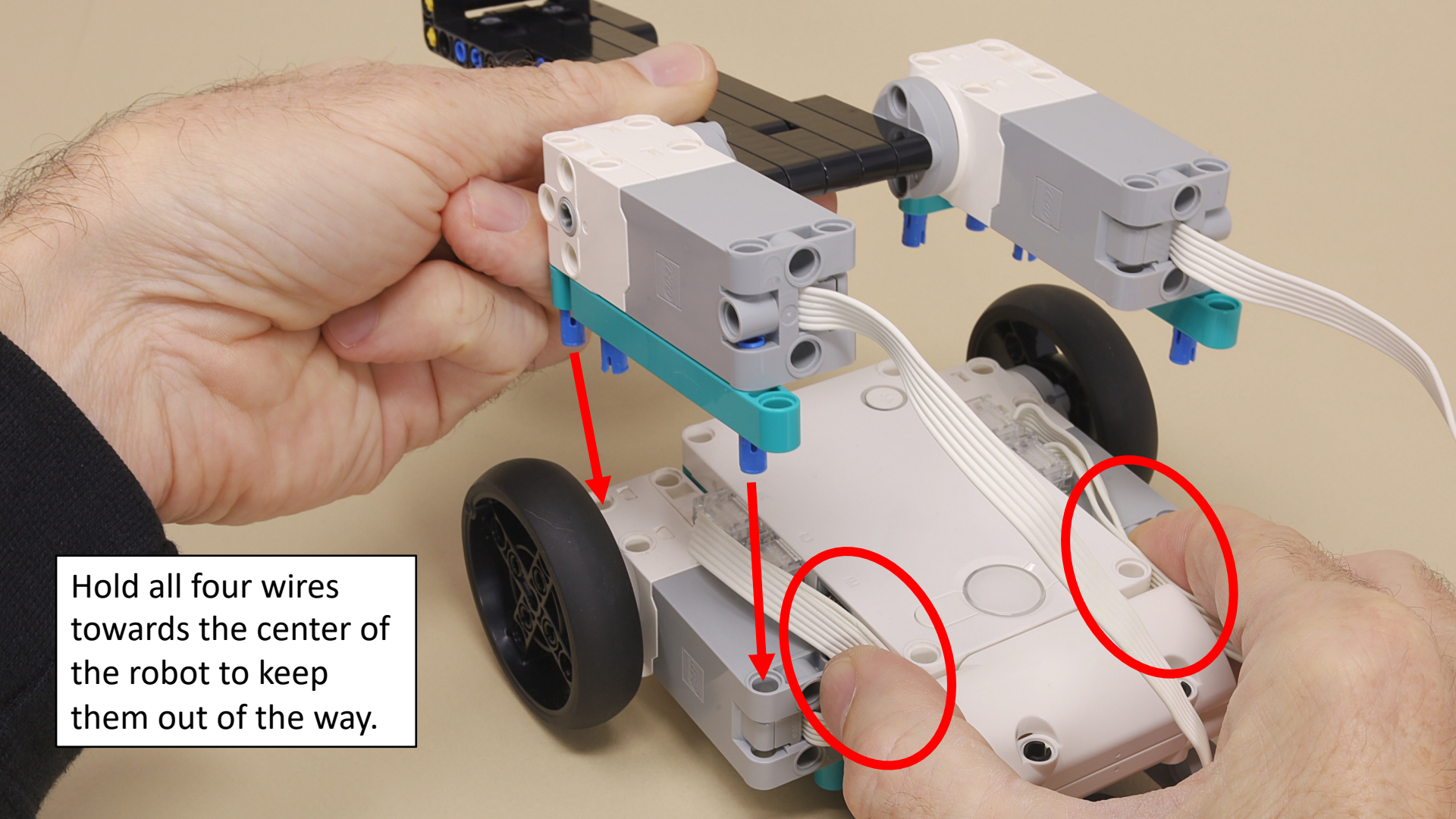




C = Left Hammer Motor  
D = Right Hammer Motor

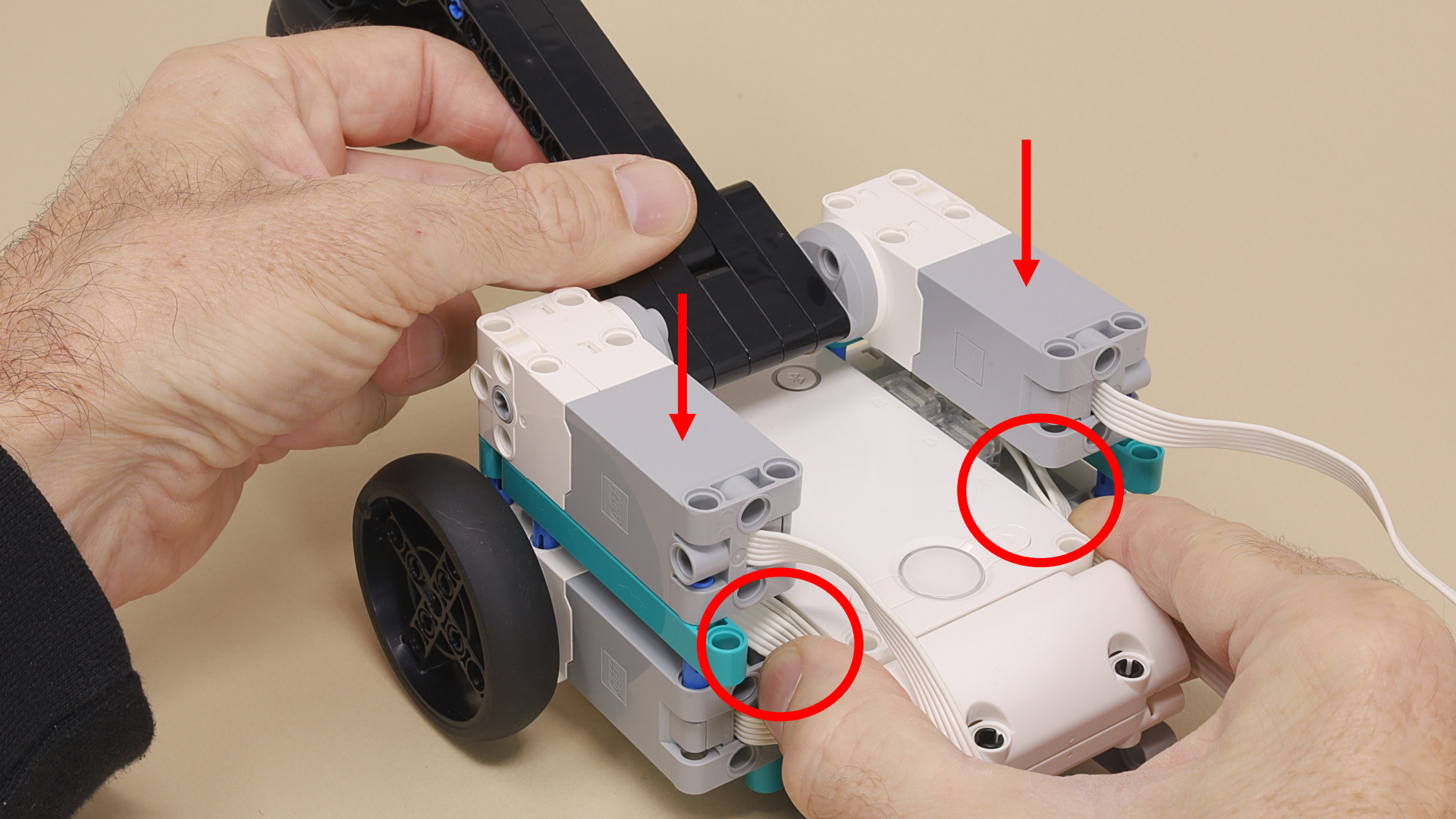




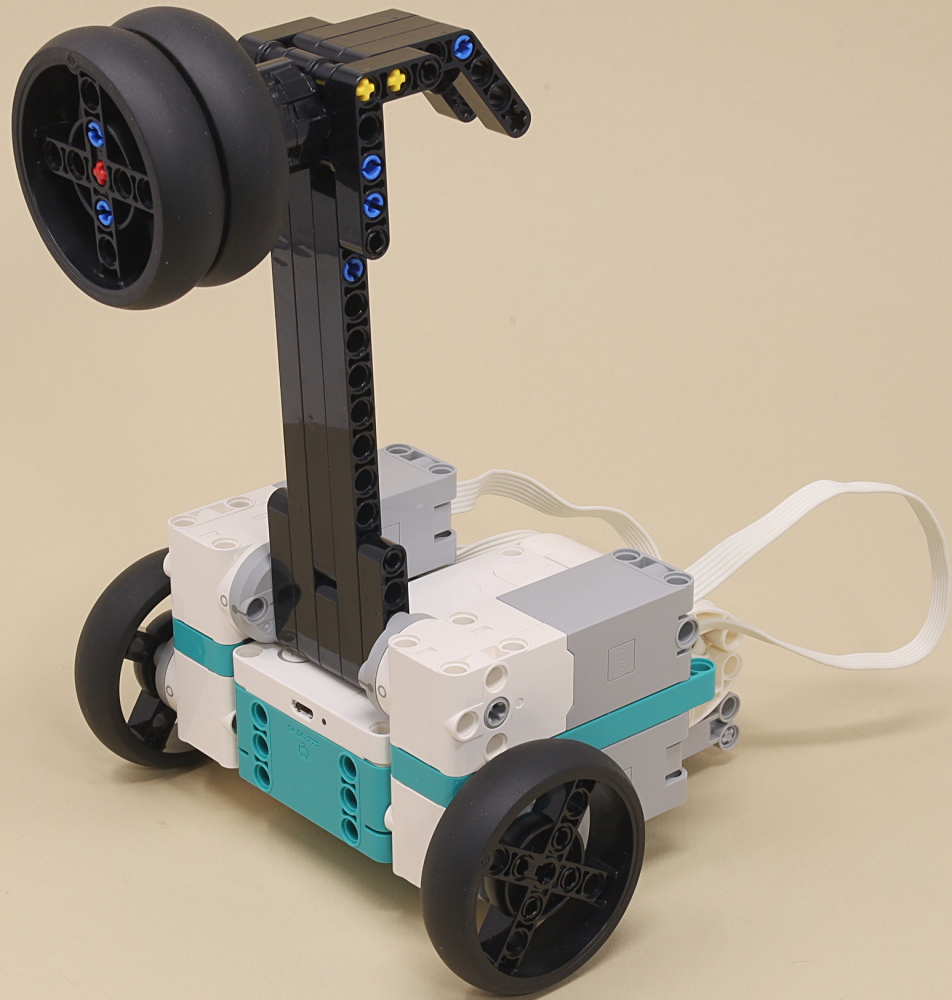


Hold all four wires towards the center of the robot to keep them out of the way.









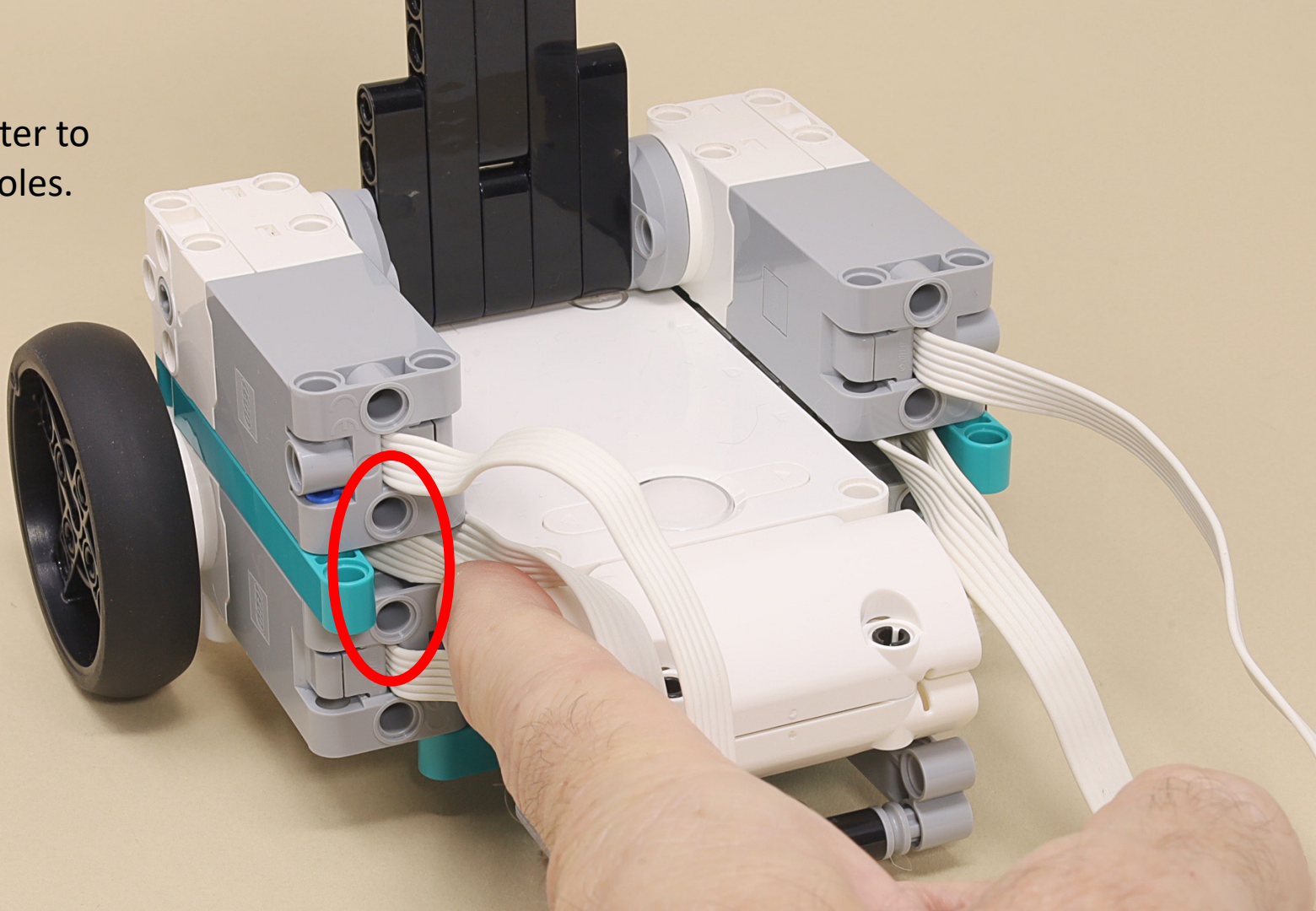


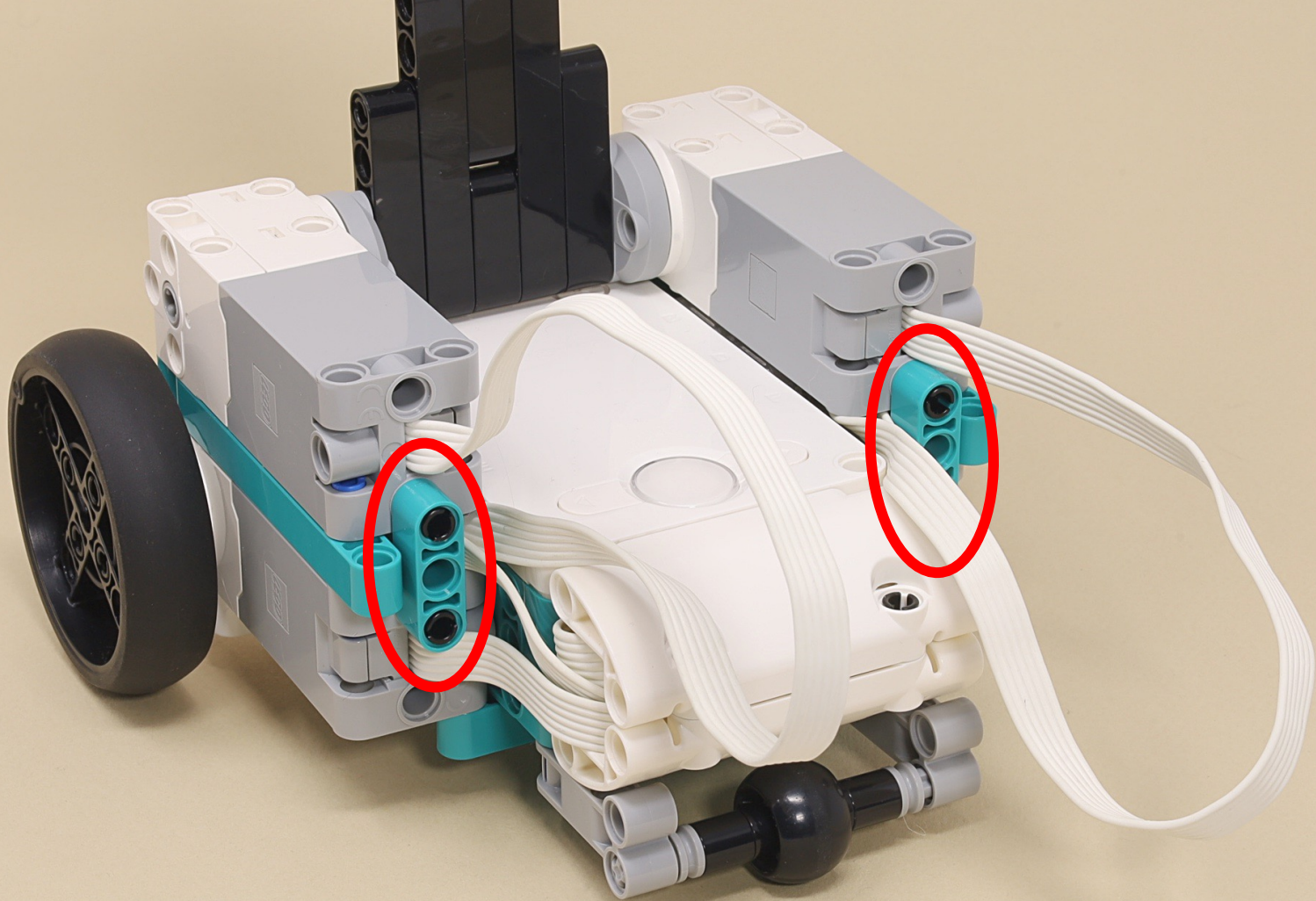






Push the wires  
toward the center to  
expose these holes.







You can fold and stuff the extra wire lengths into this space.

