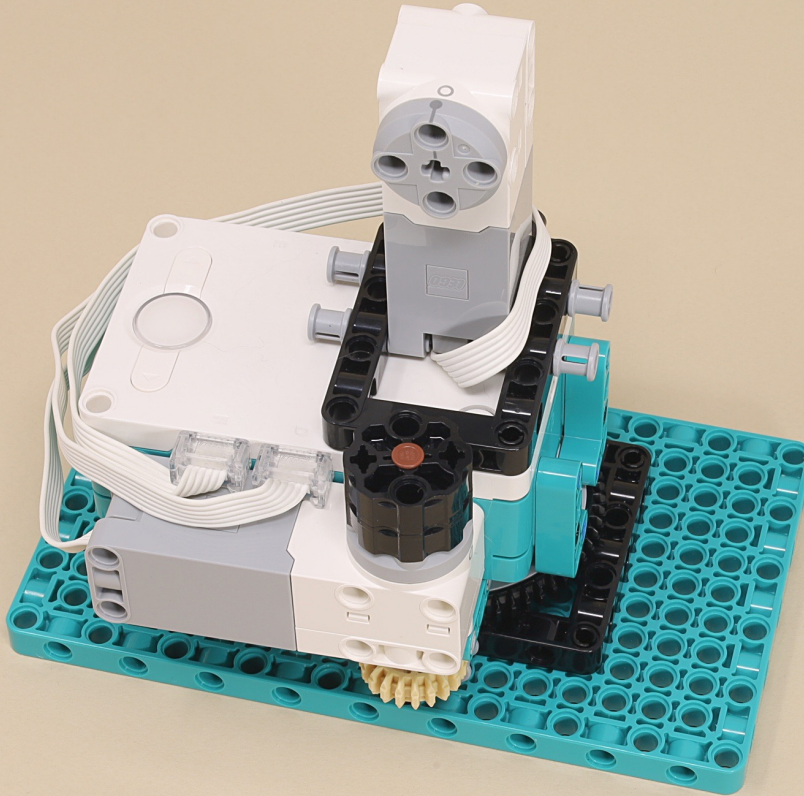


Stand for Flight Simulator



Scroll for
building
instructions

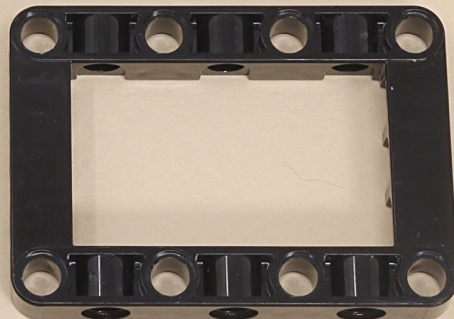


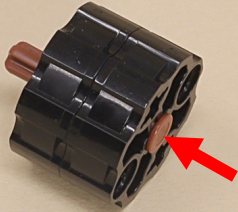


3

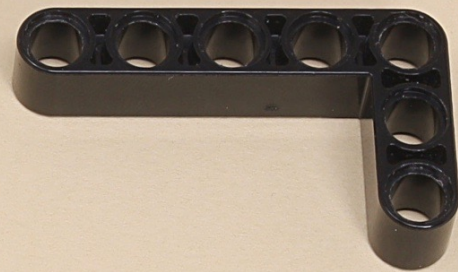


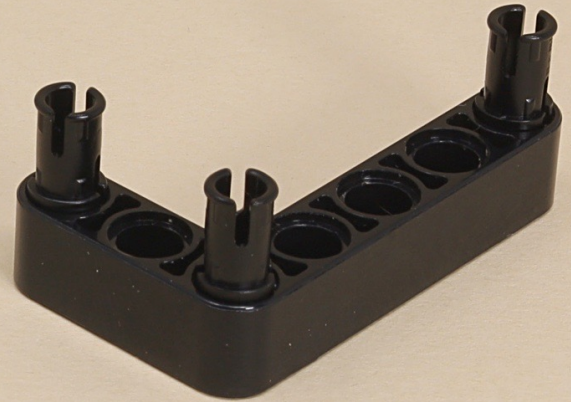
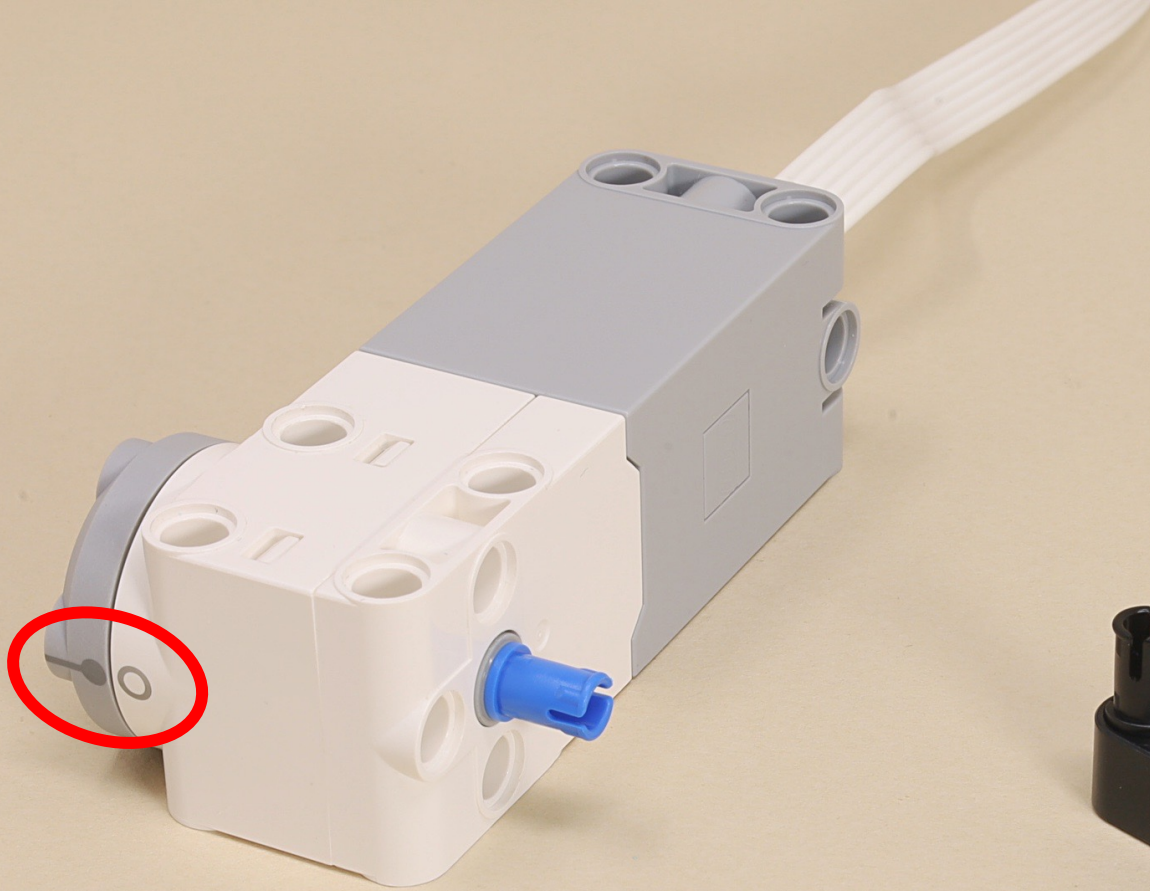
(6 x)

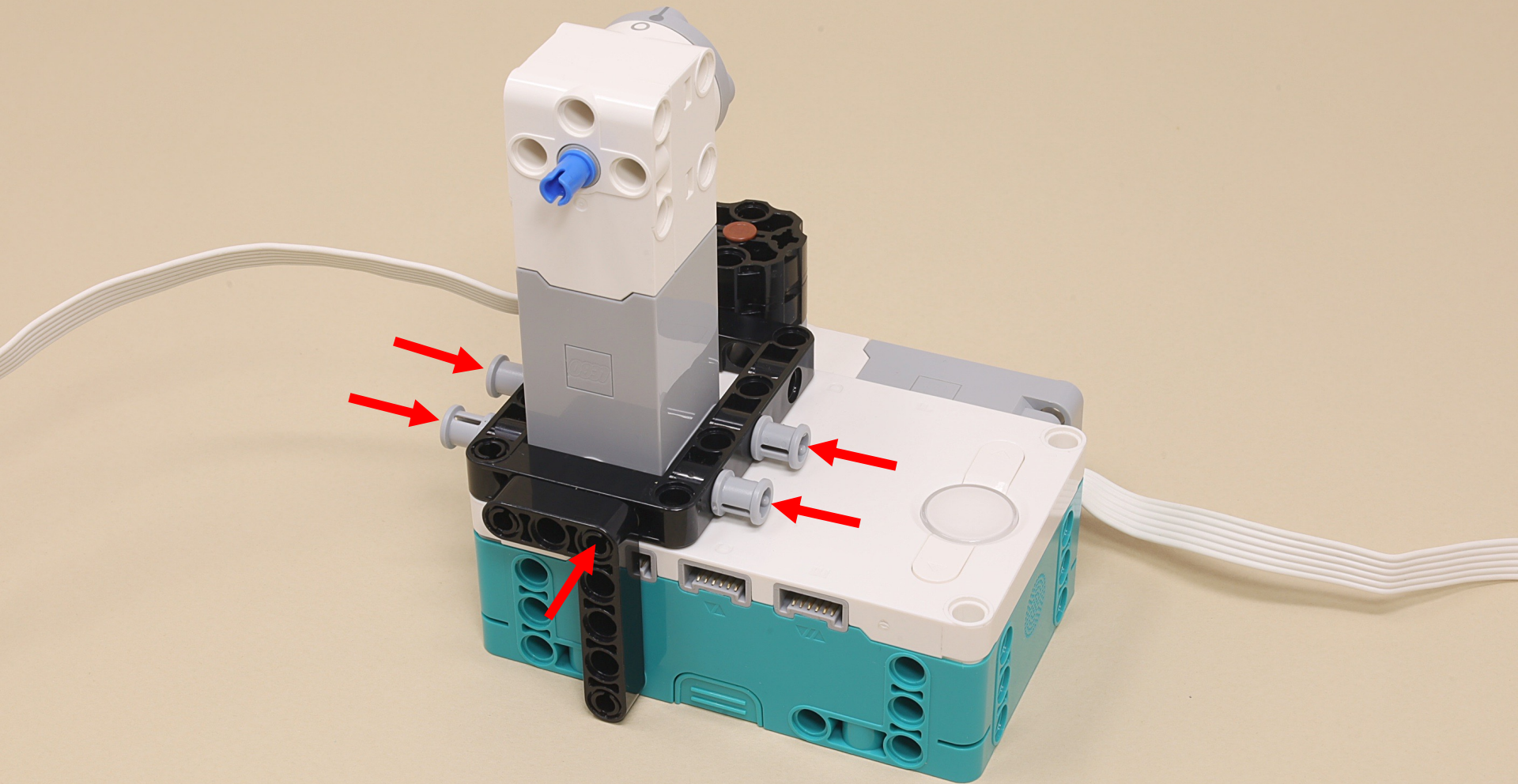












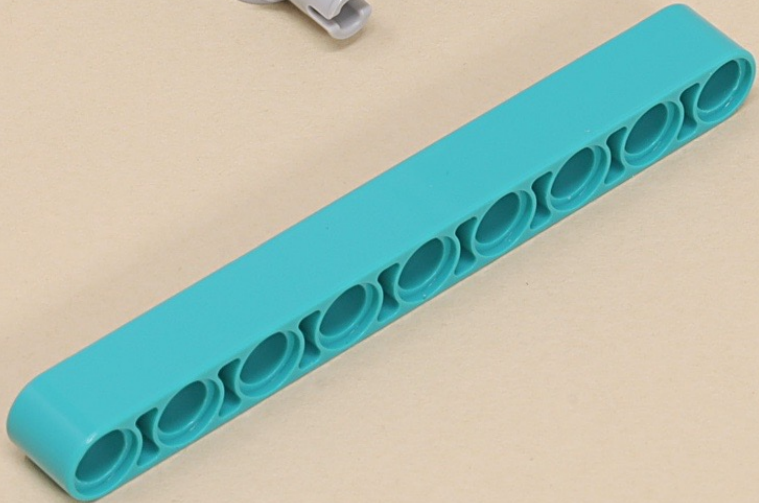
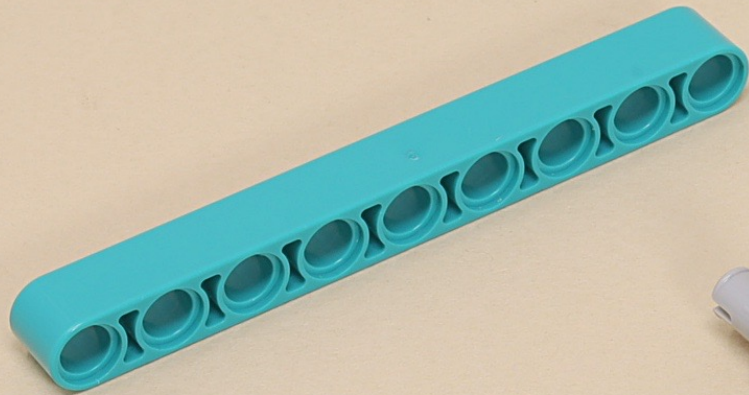


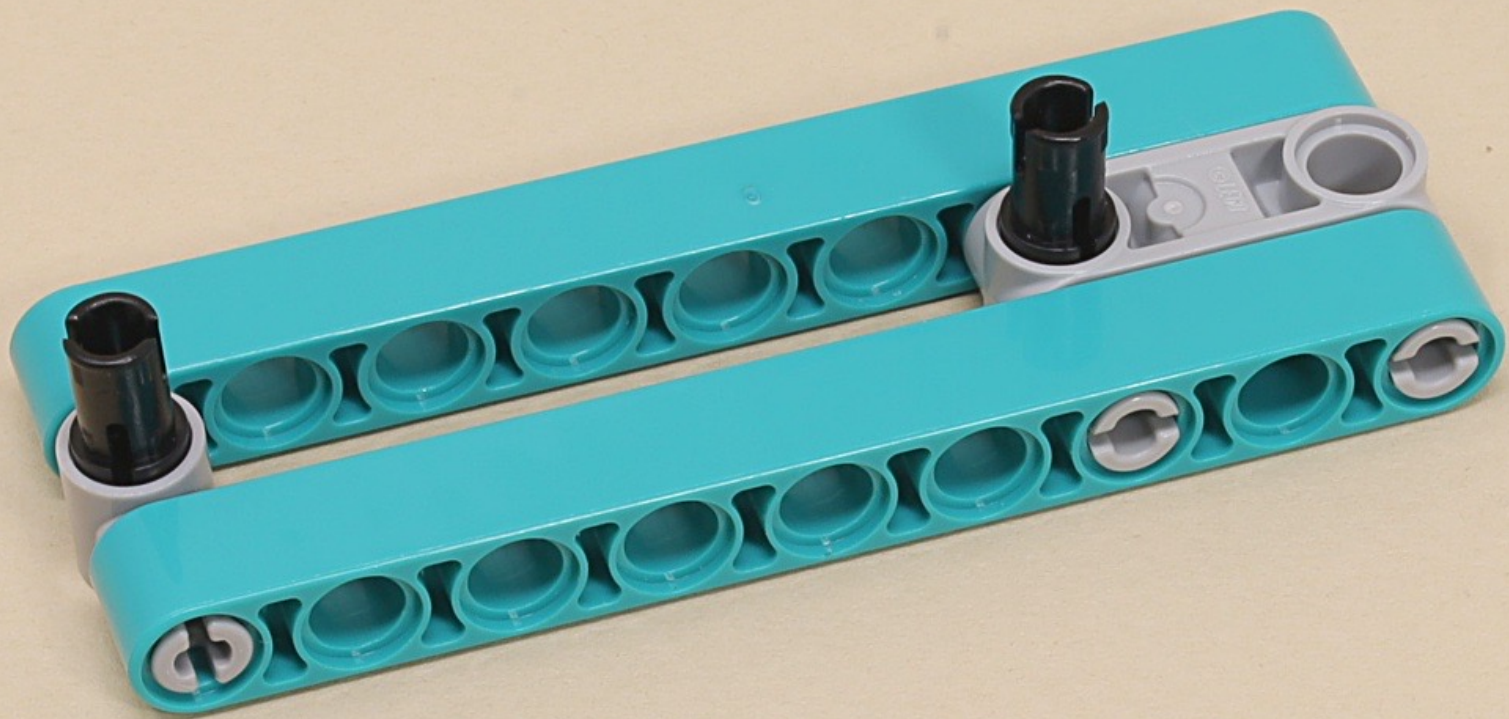
9

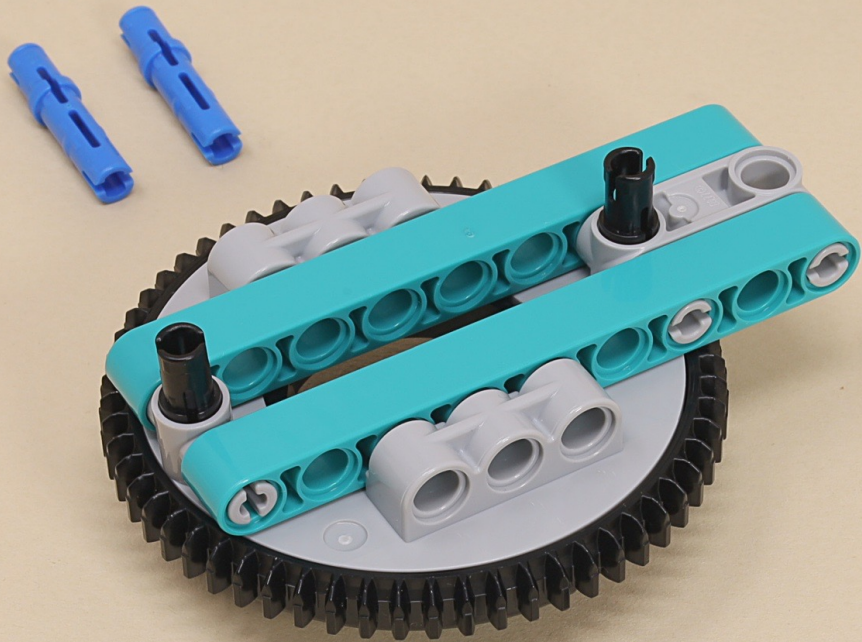


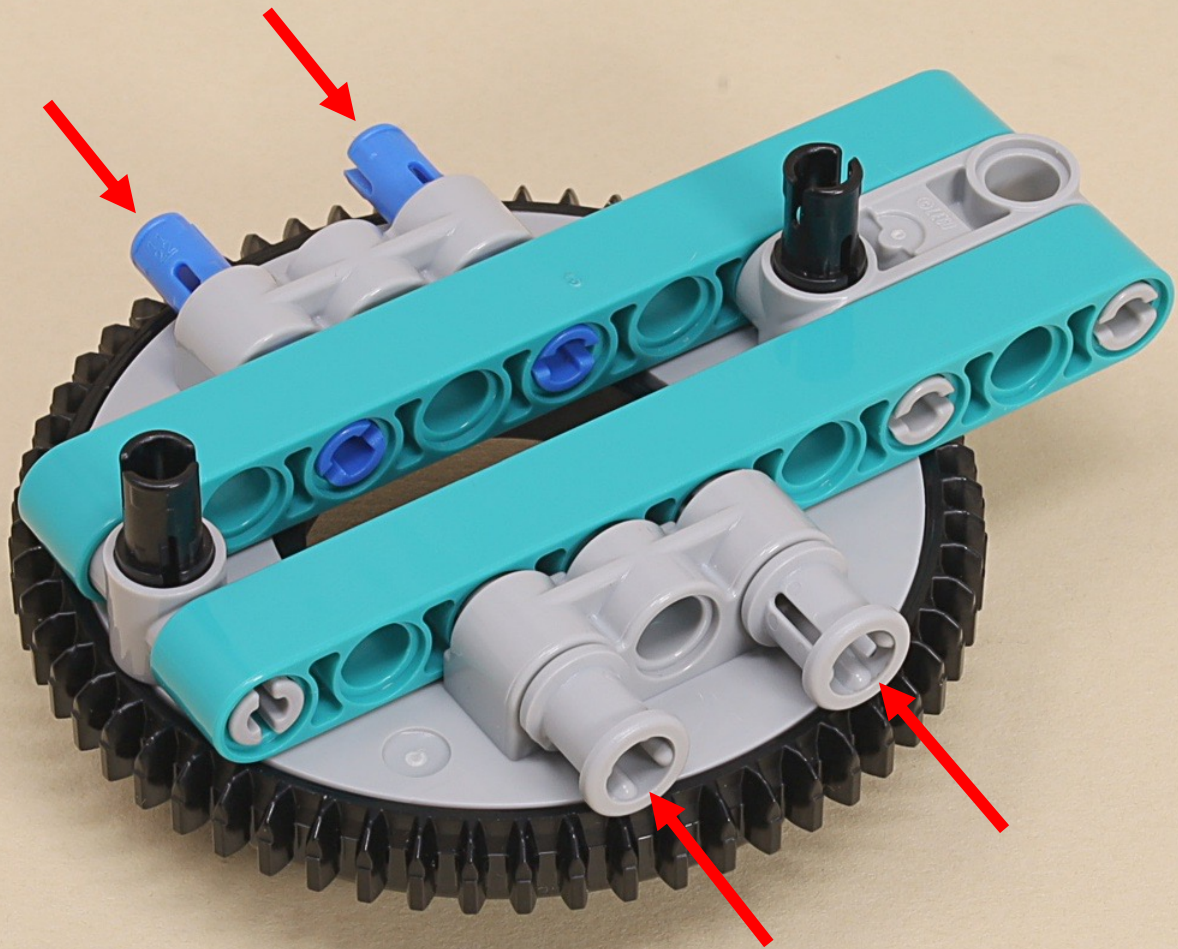
9

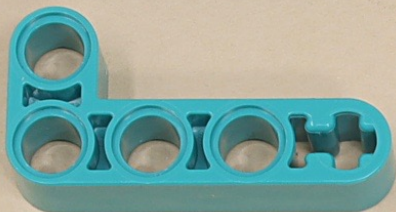
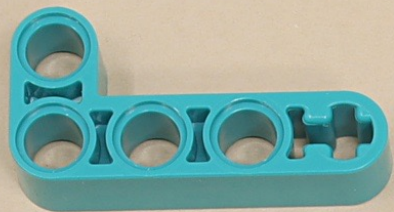






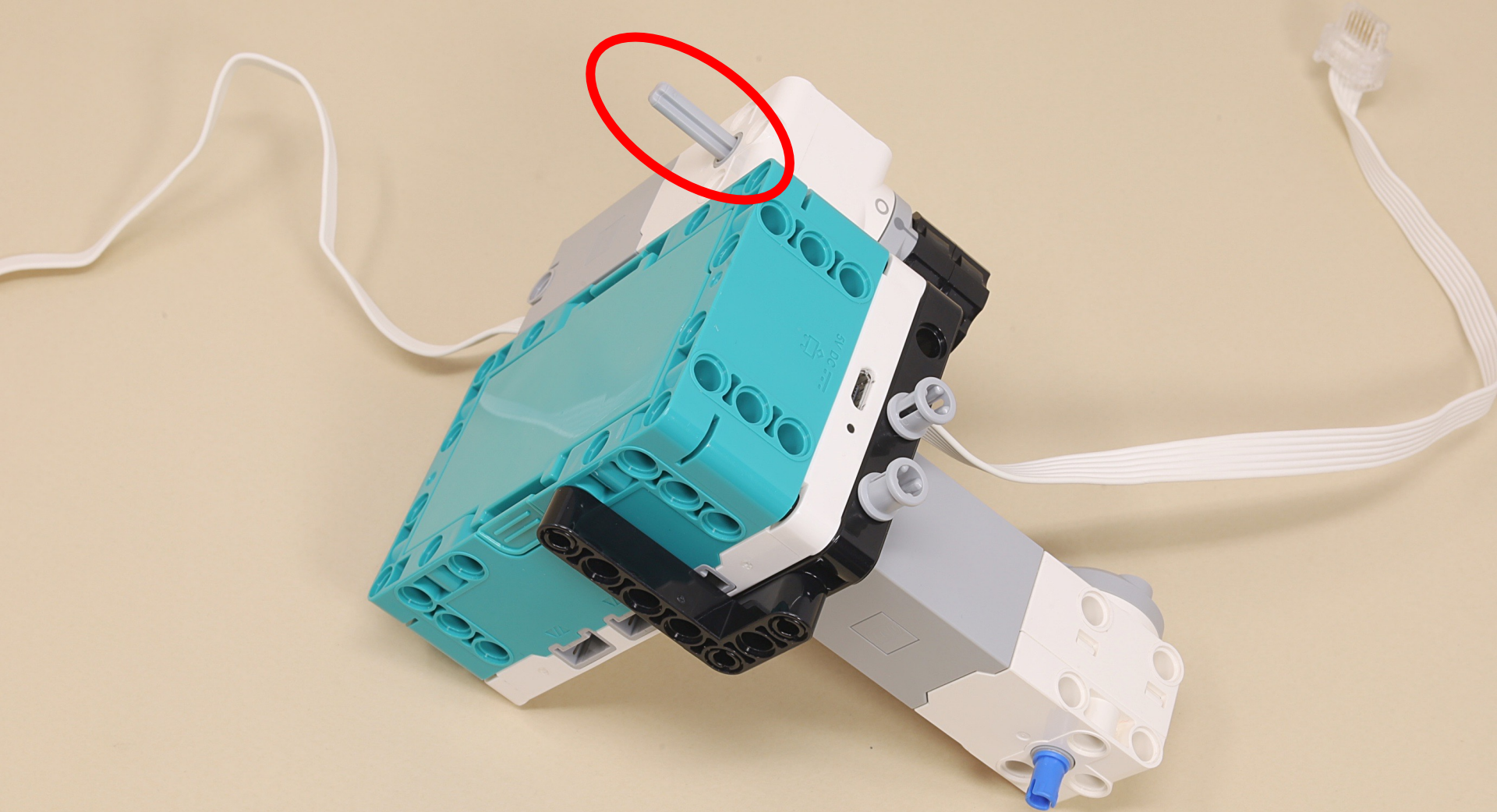


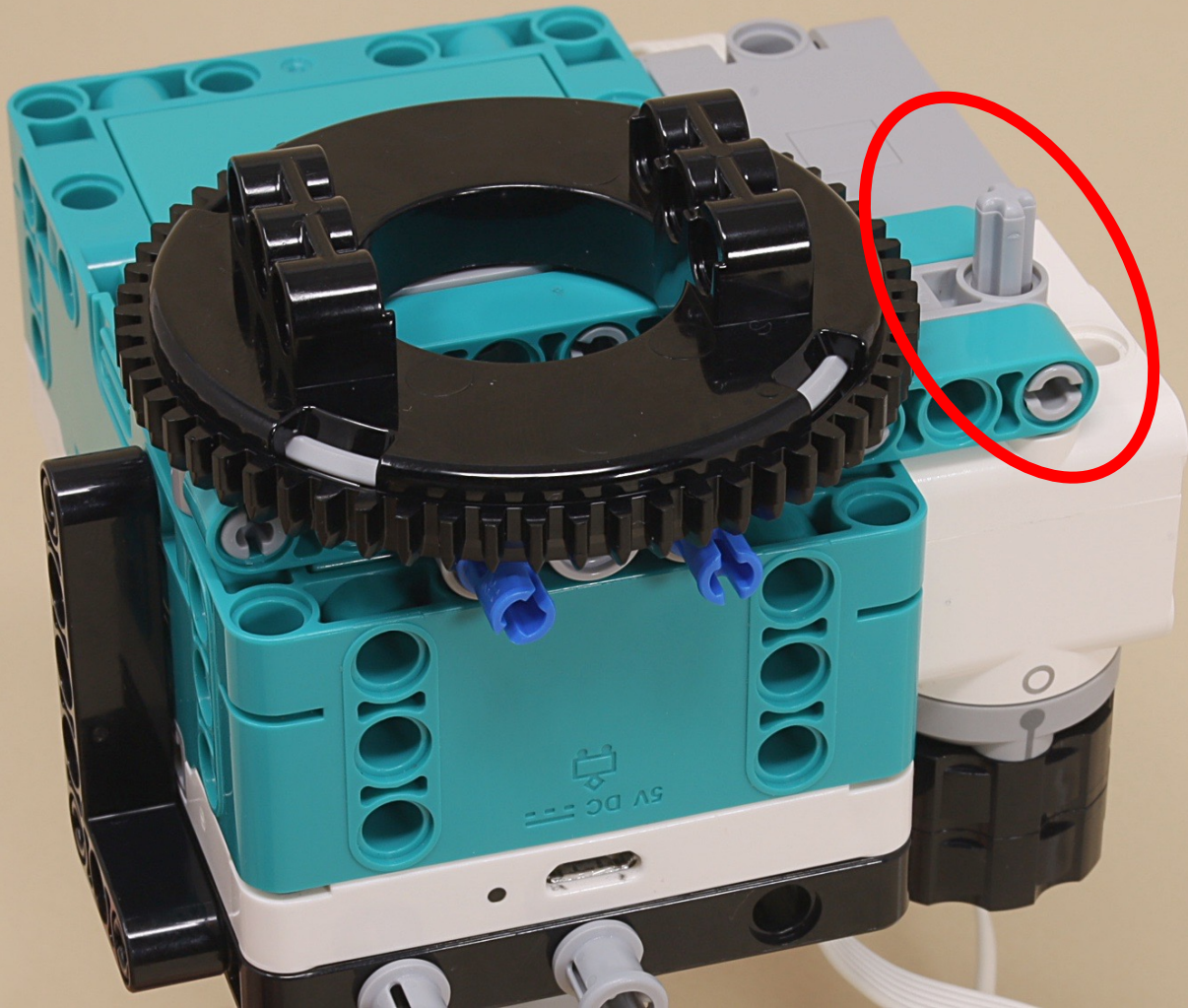




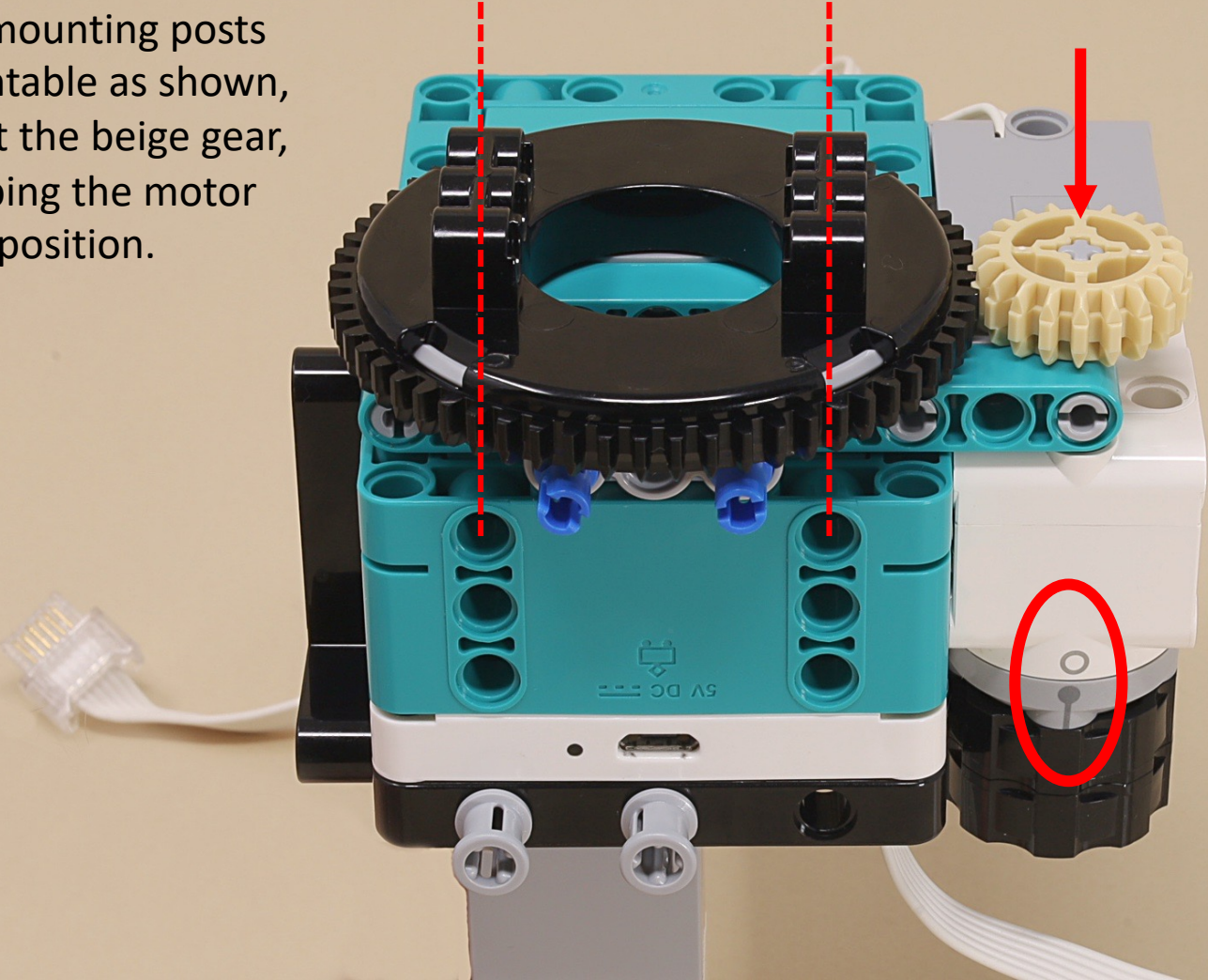
3

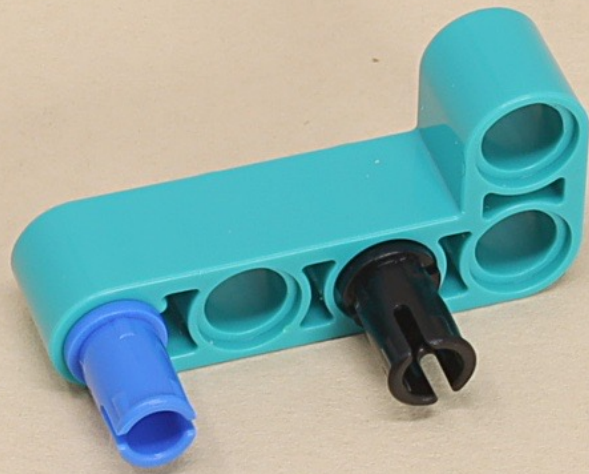
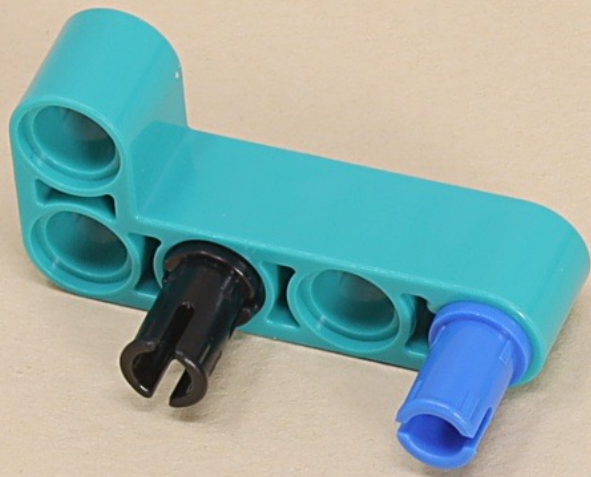


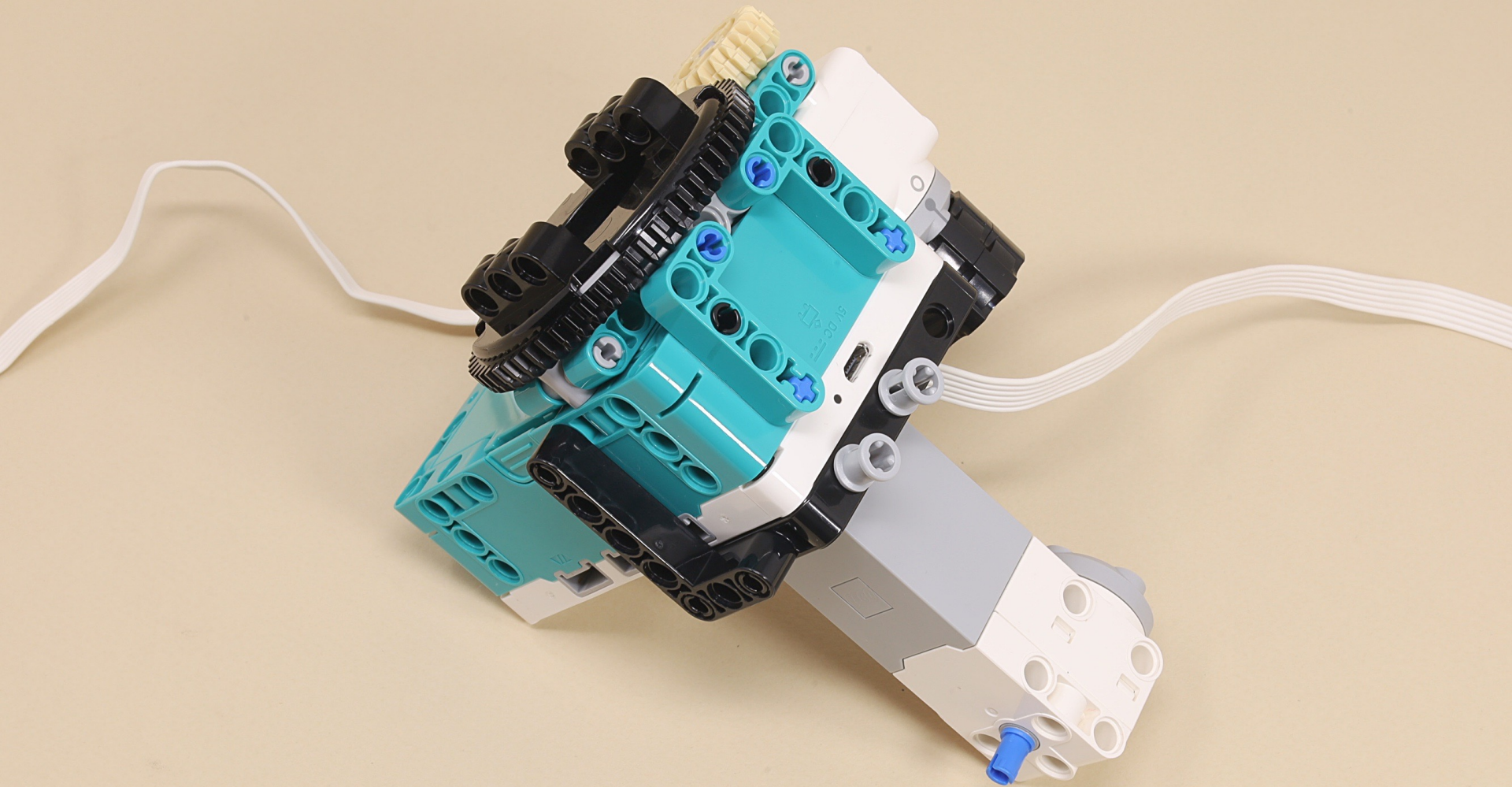


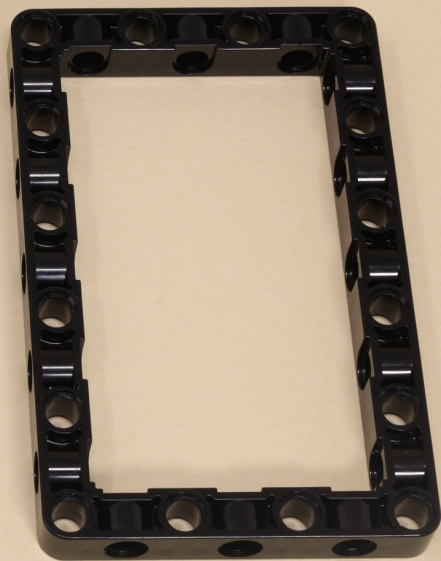
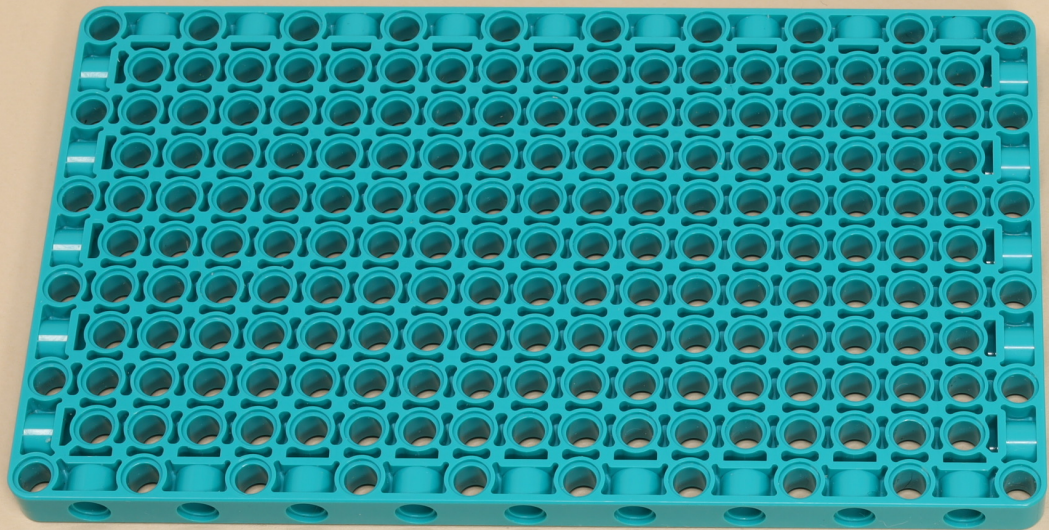


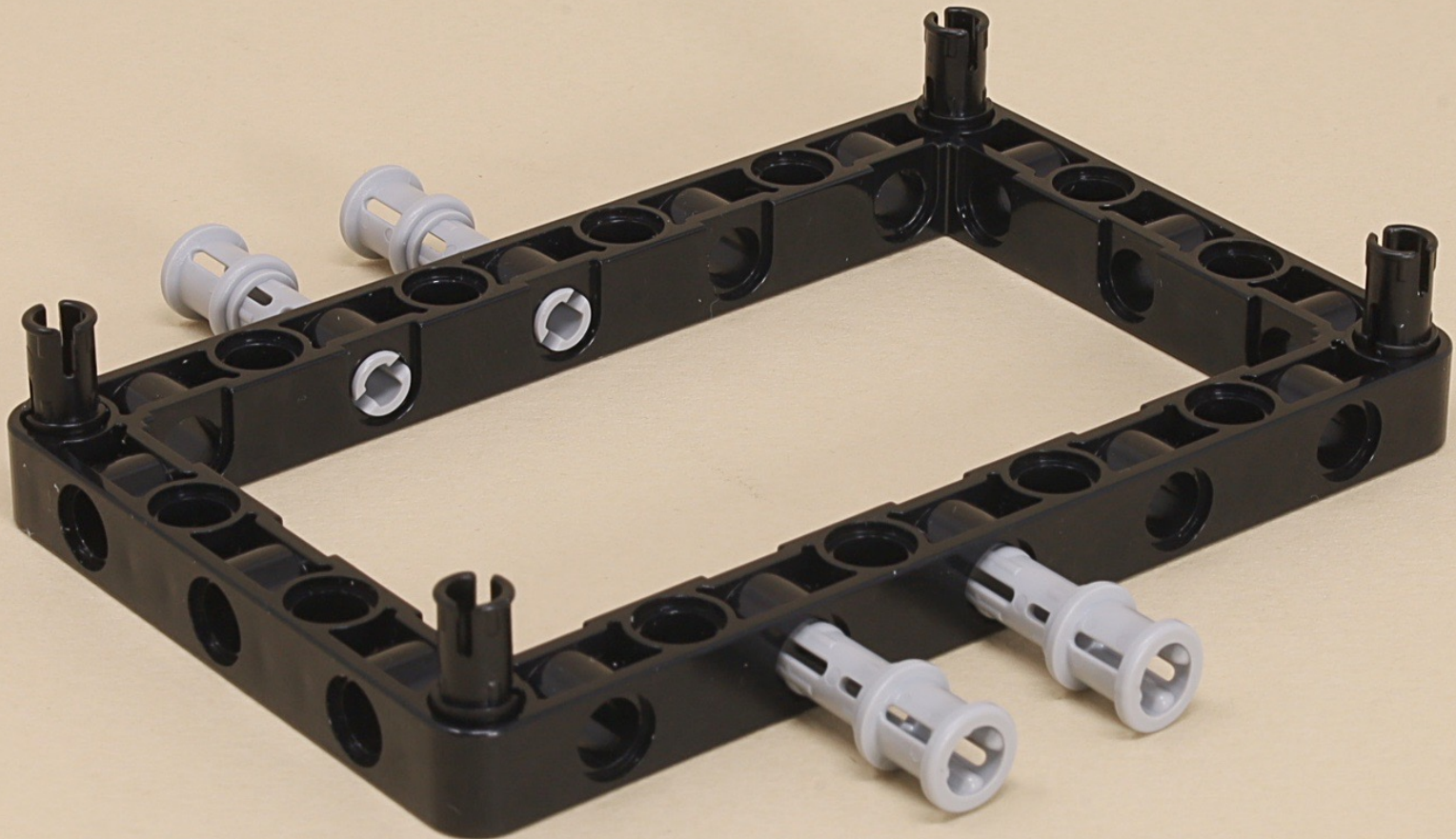
Align the mounting posts of the turntable as shown, then insert the beige gear, while keeping the motor at its zero position.

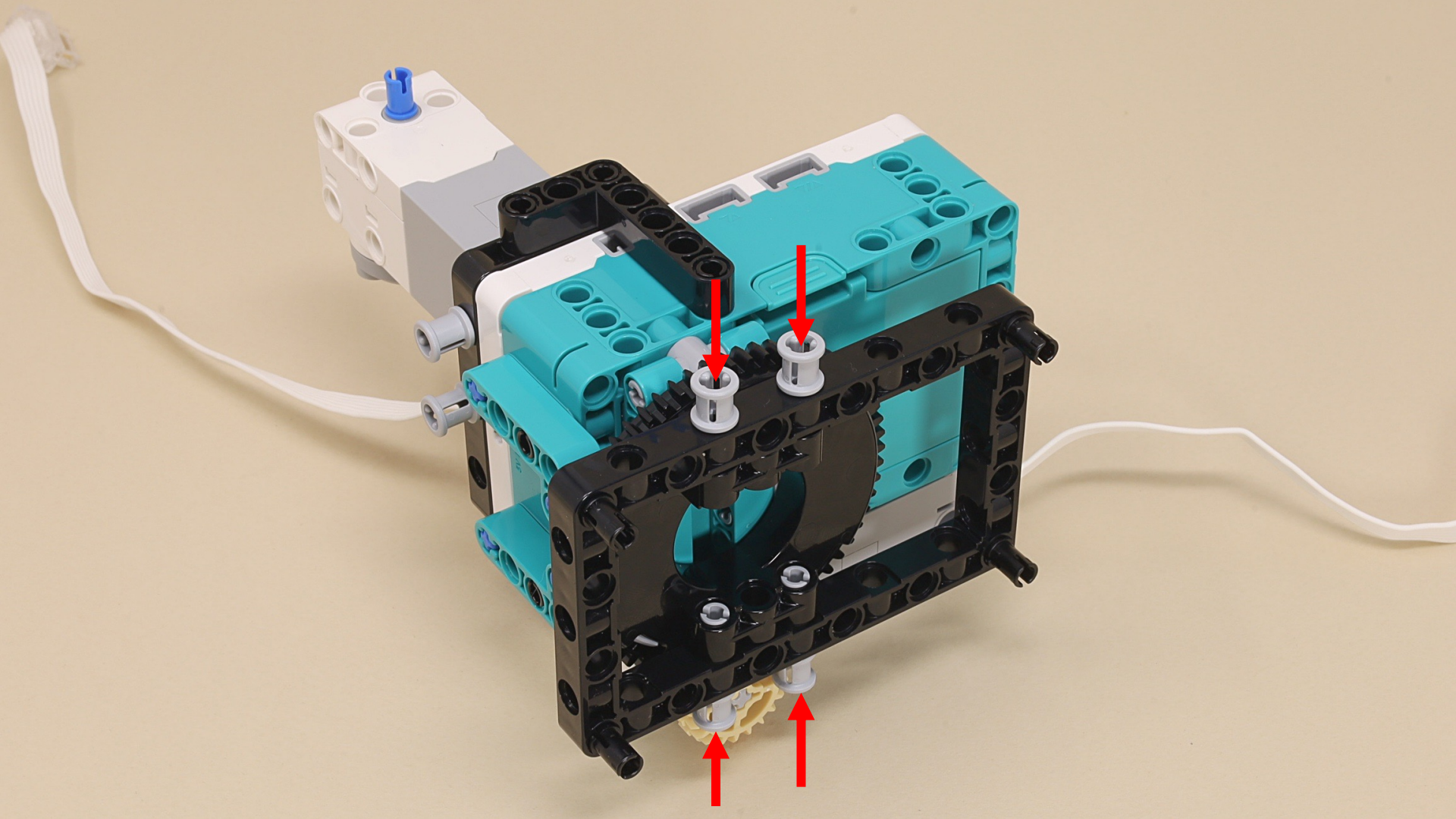




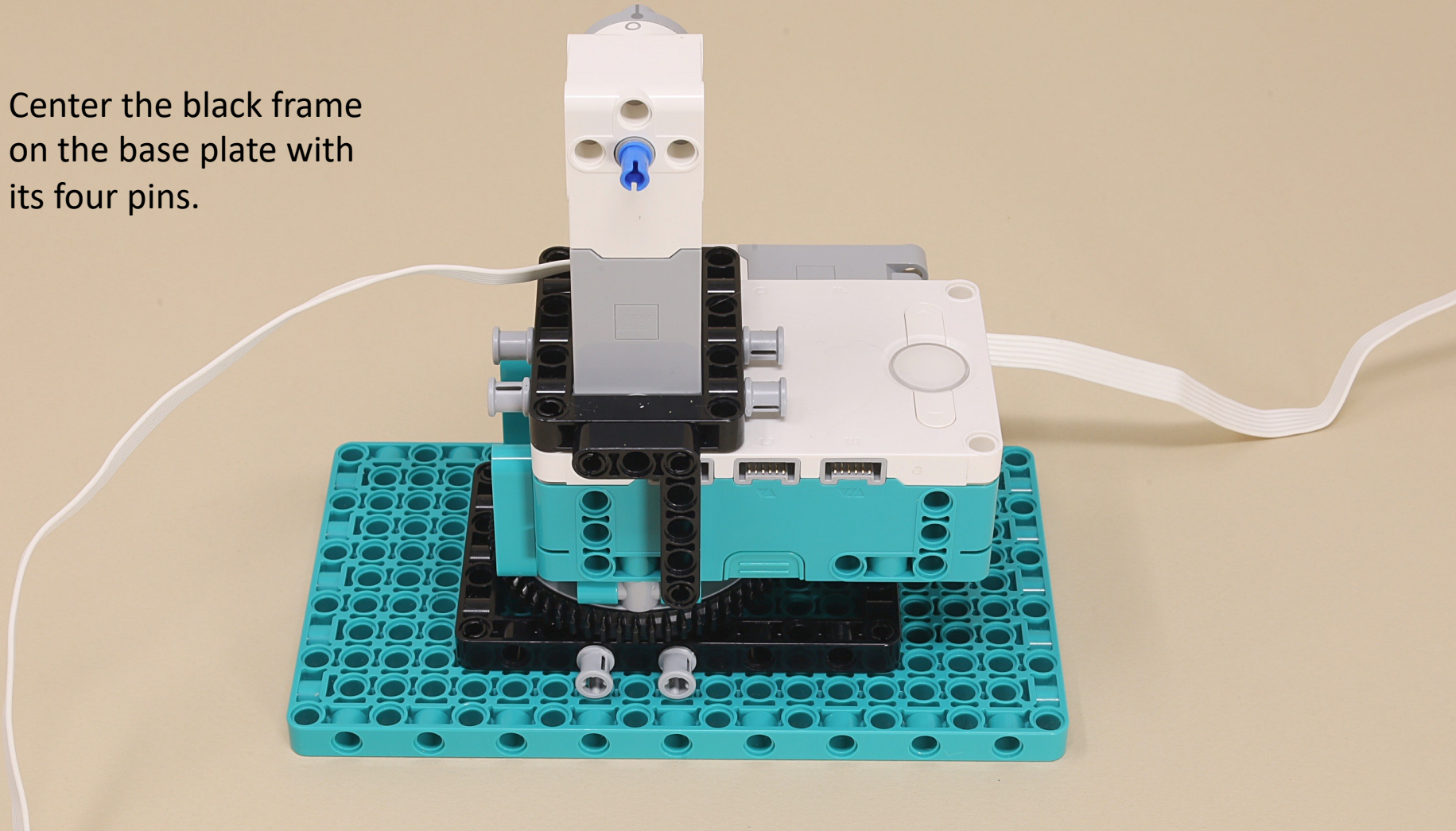








Center the black frame
on the base plate with
its four pins.

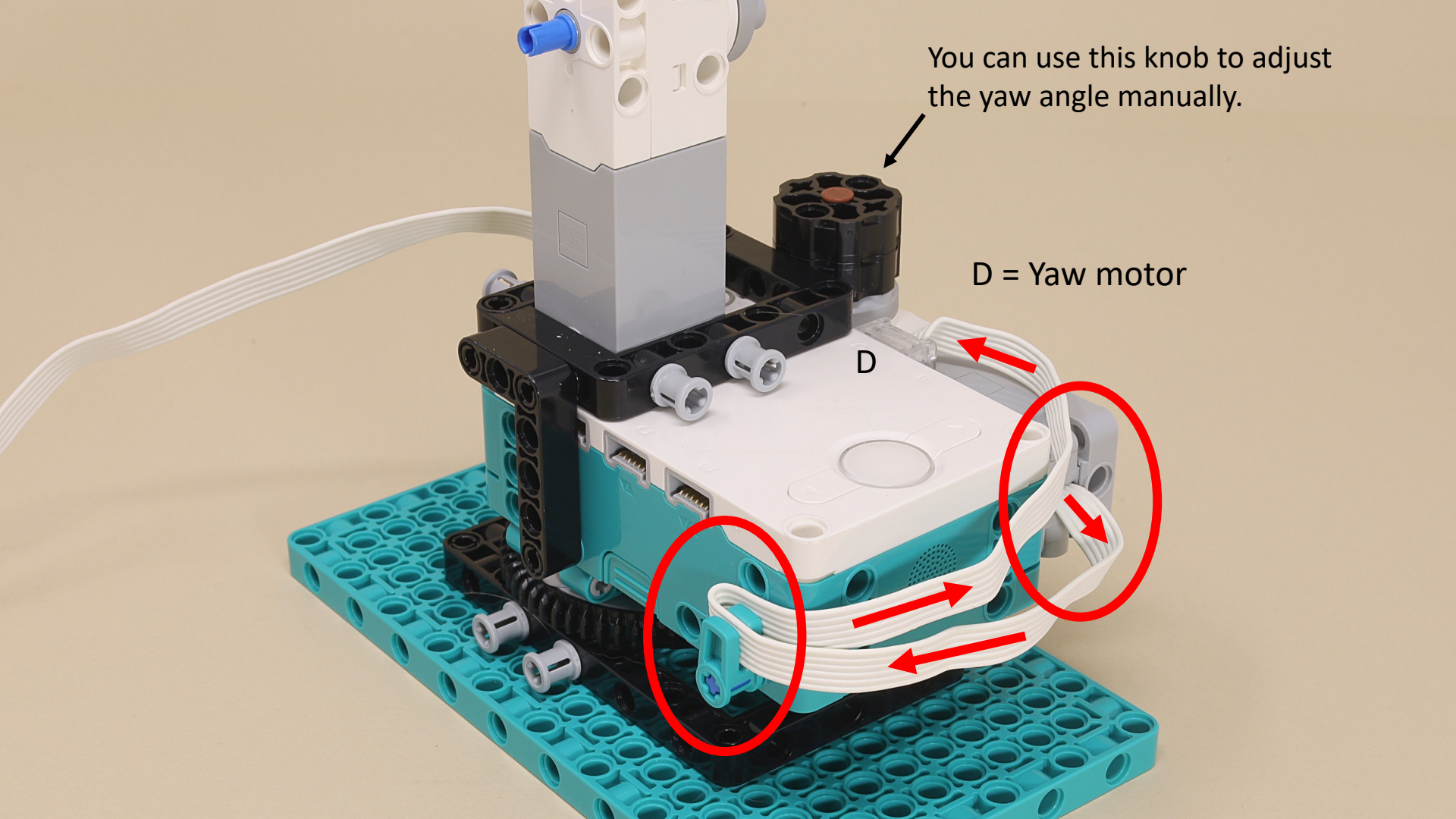


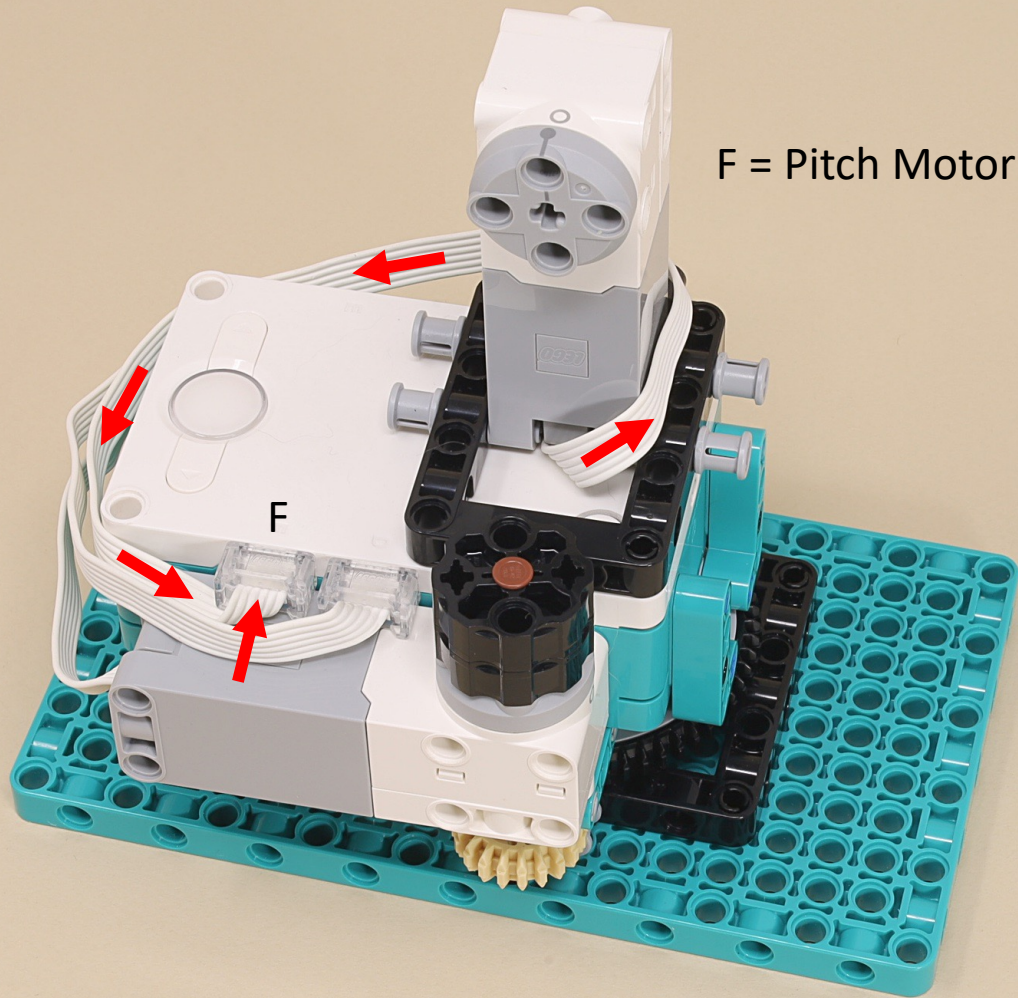


You can use this knob to adjust the yaw angle manually.

D = Yaw motor

D





F = Pitch Motor