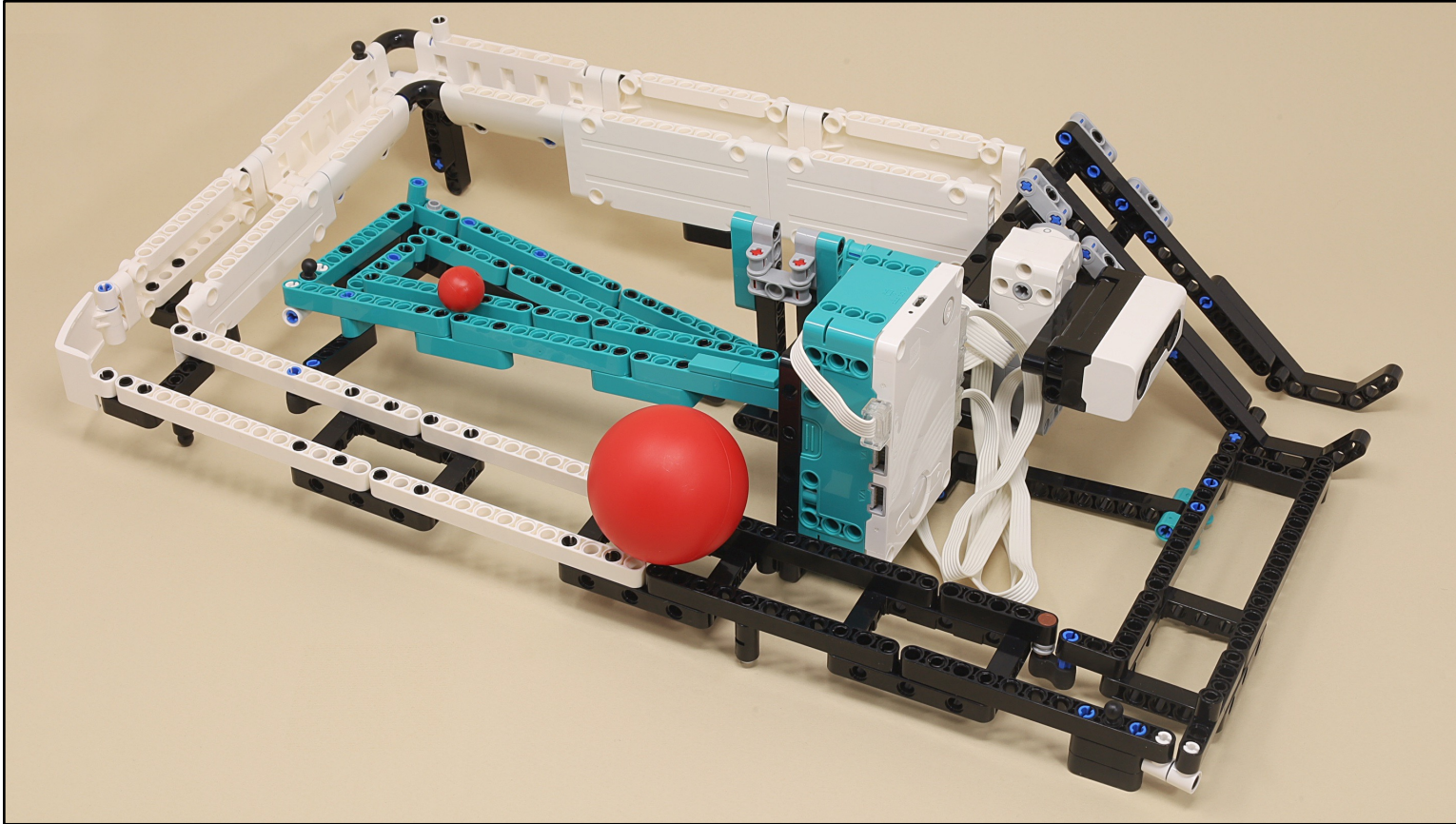


Double Ball Coaster

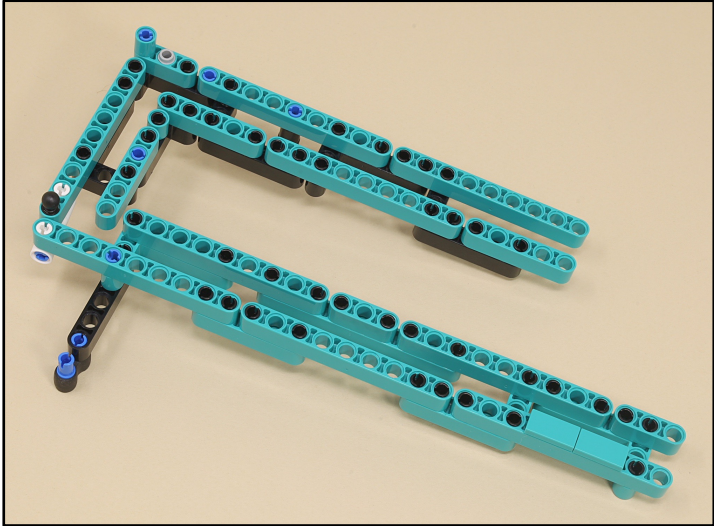


Scroll for
building
instructions

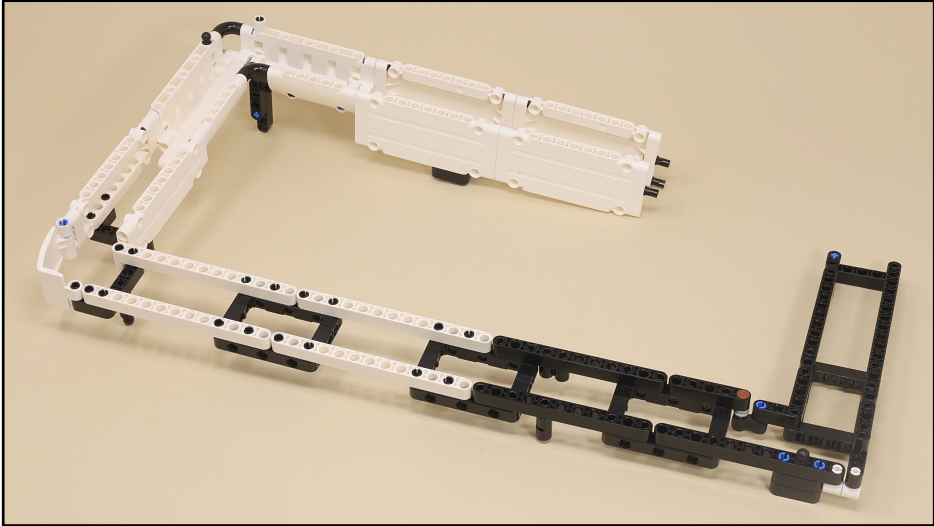


First, build:

Inner Track



Outer Track



and

...then continue here for the final assembly





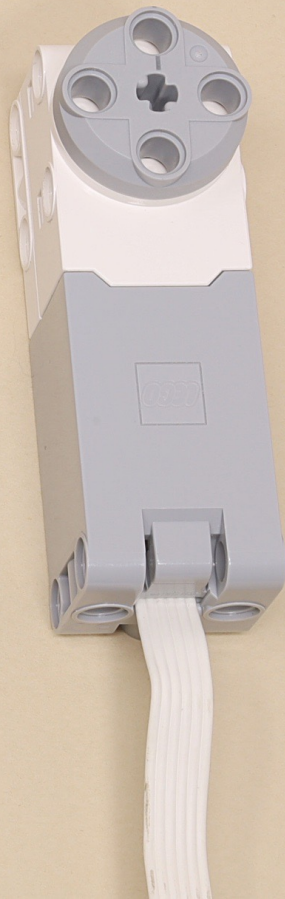
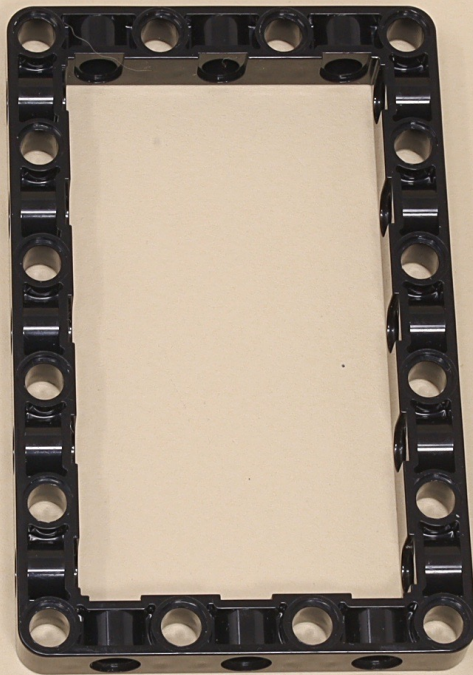
7

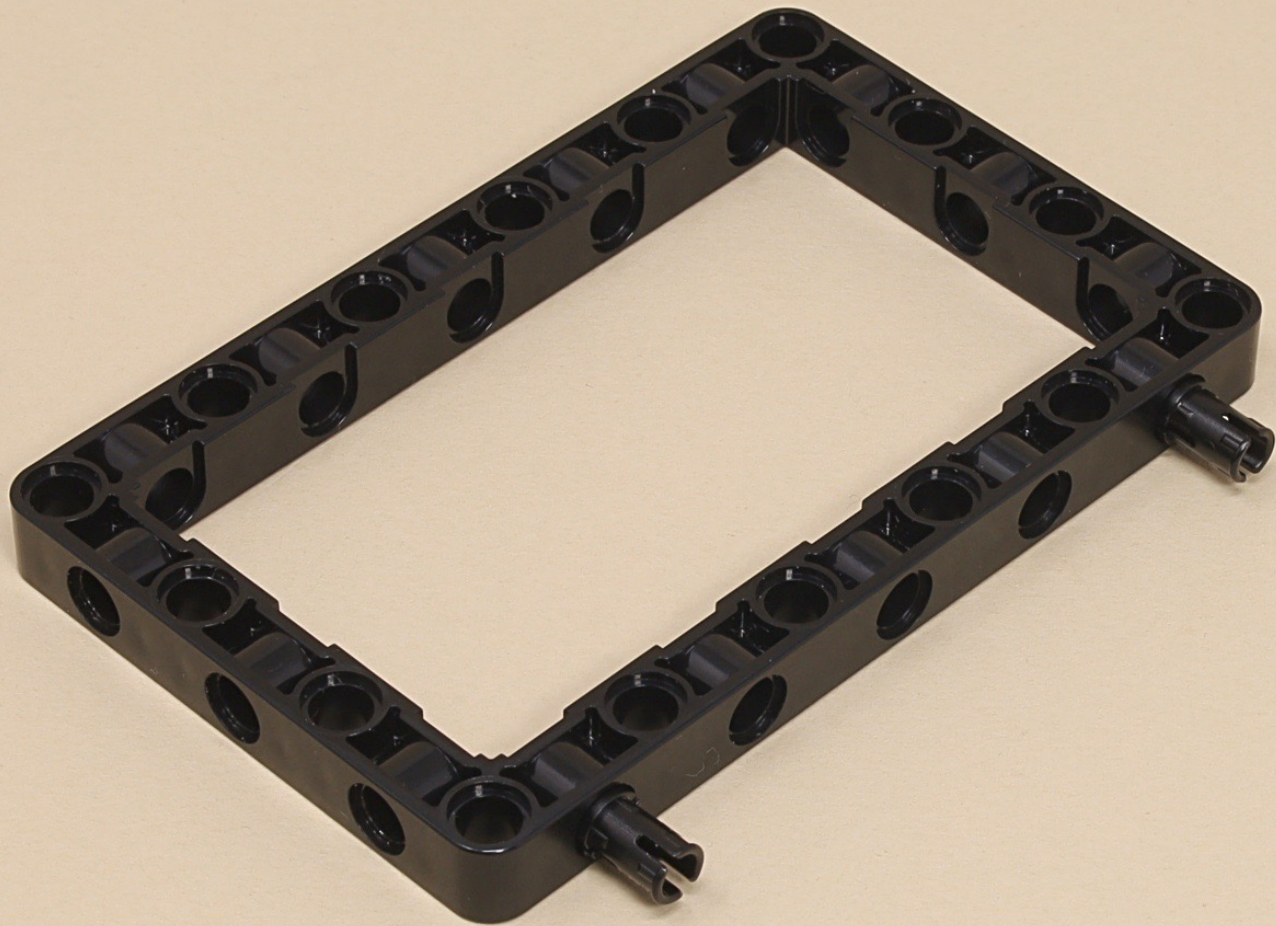


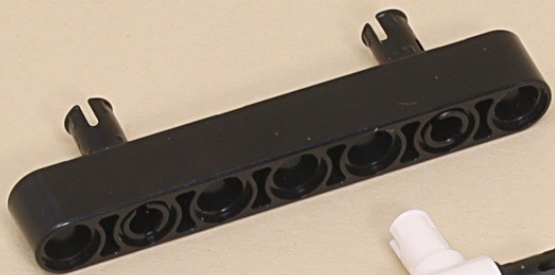
7

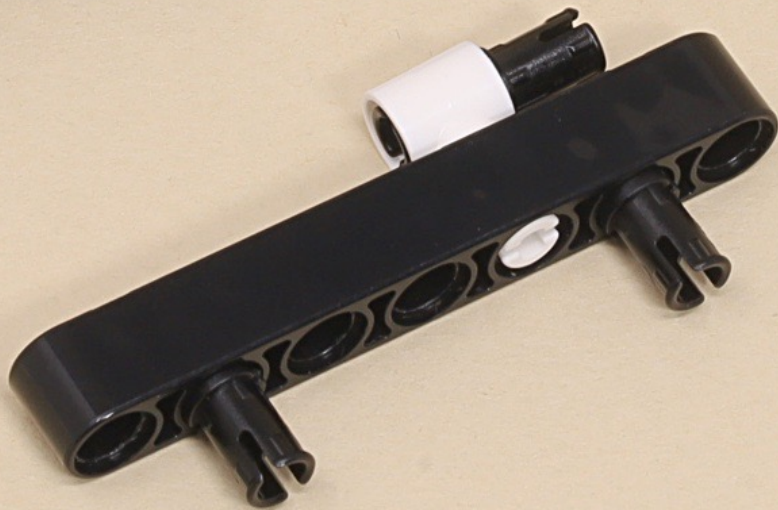
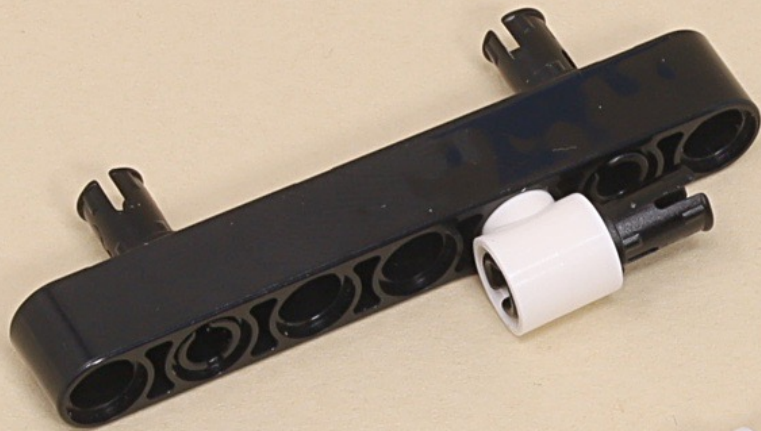


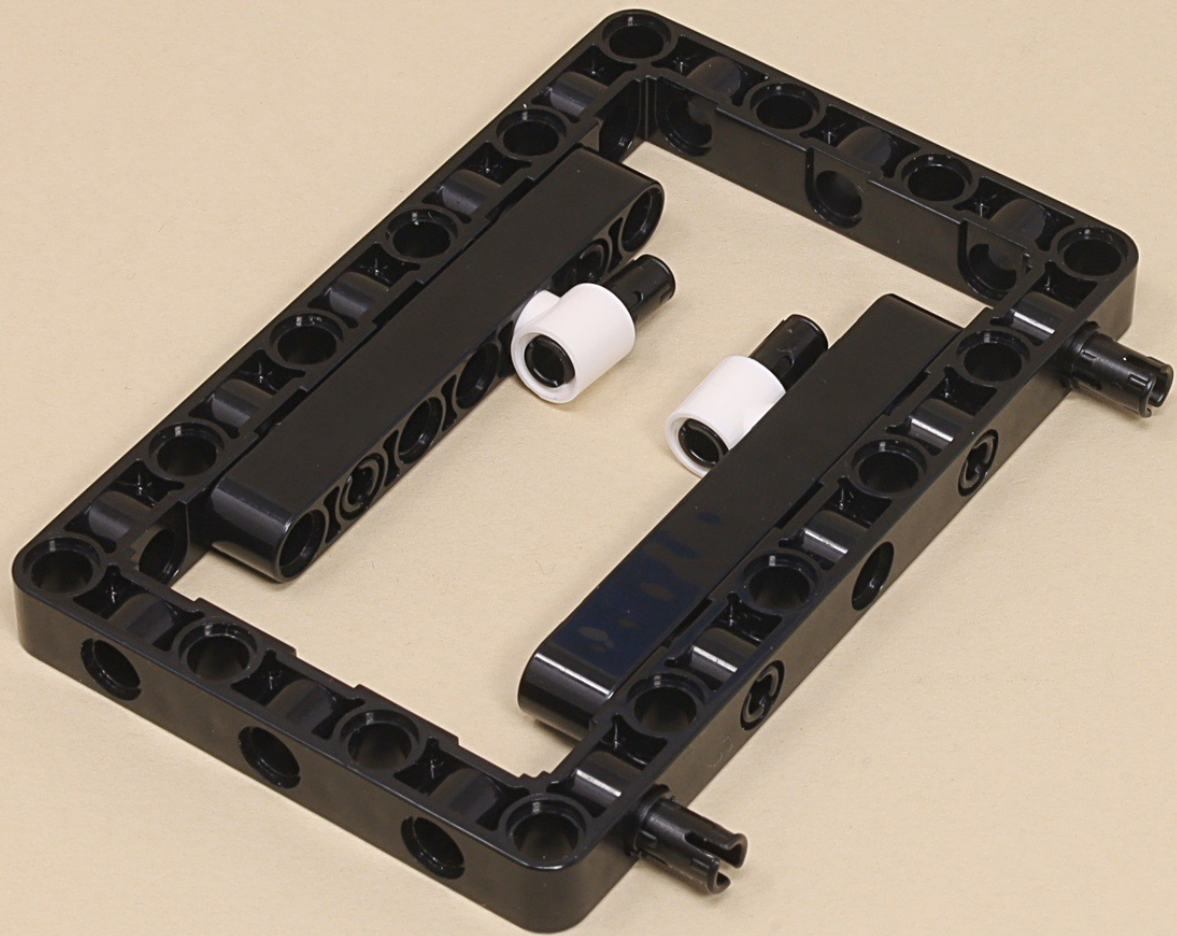
(8 x)

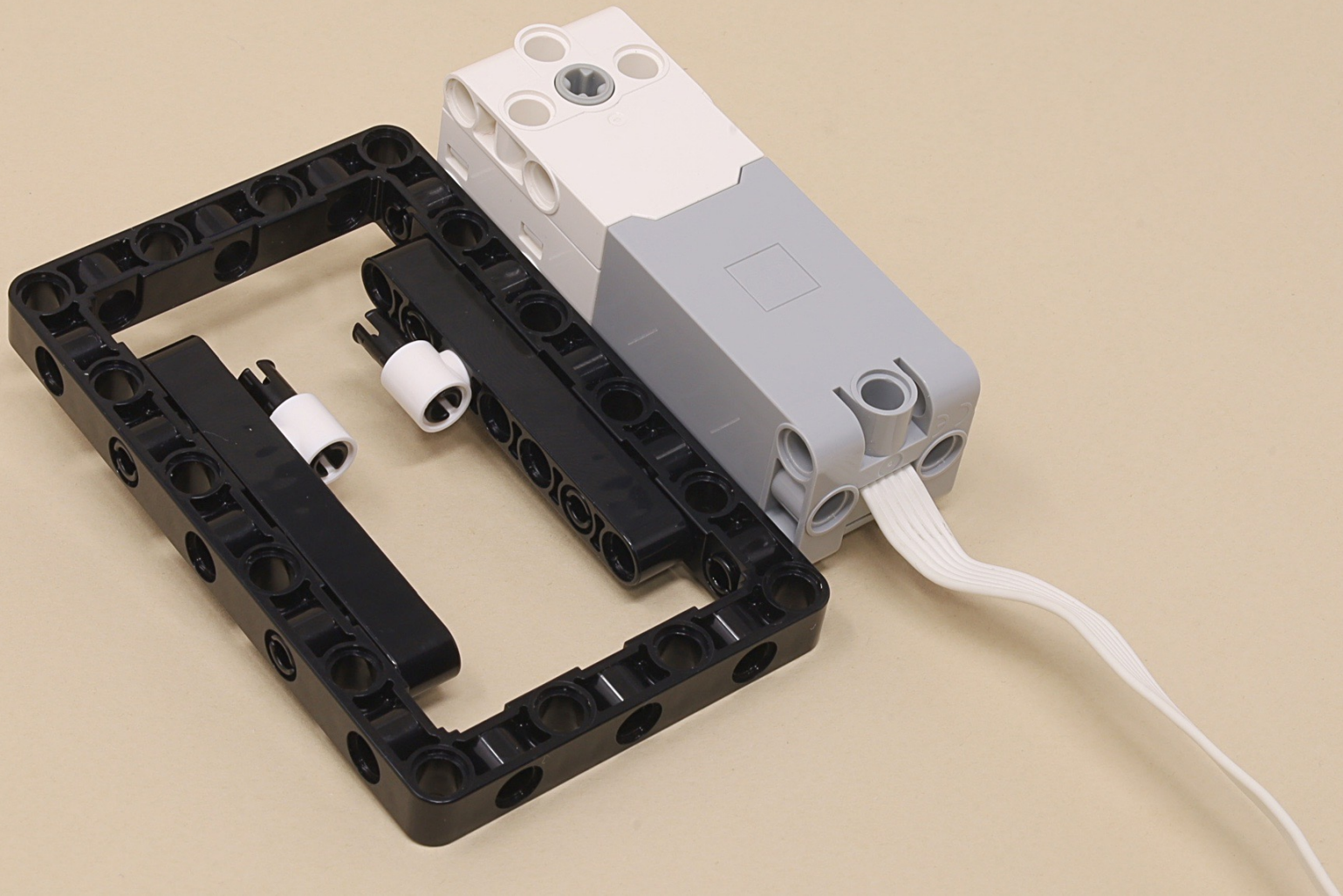


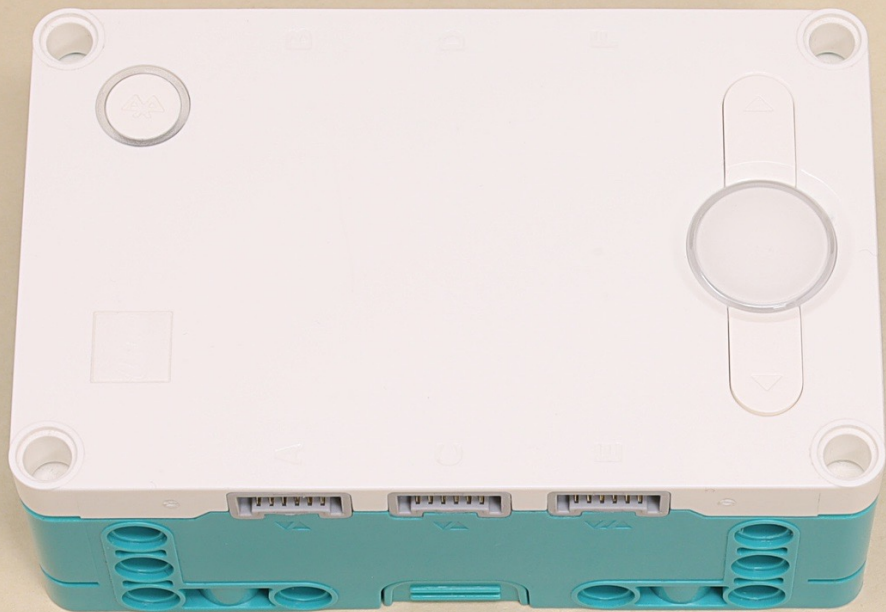


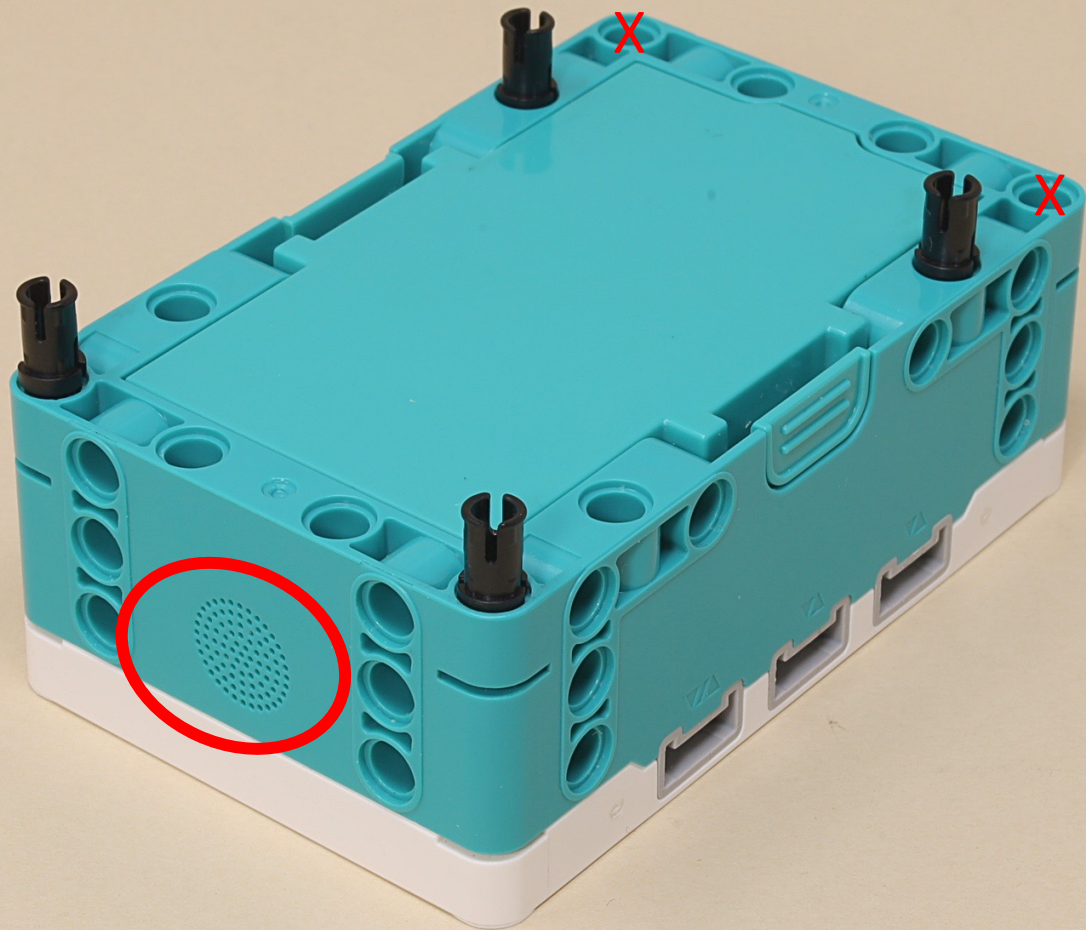


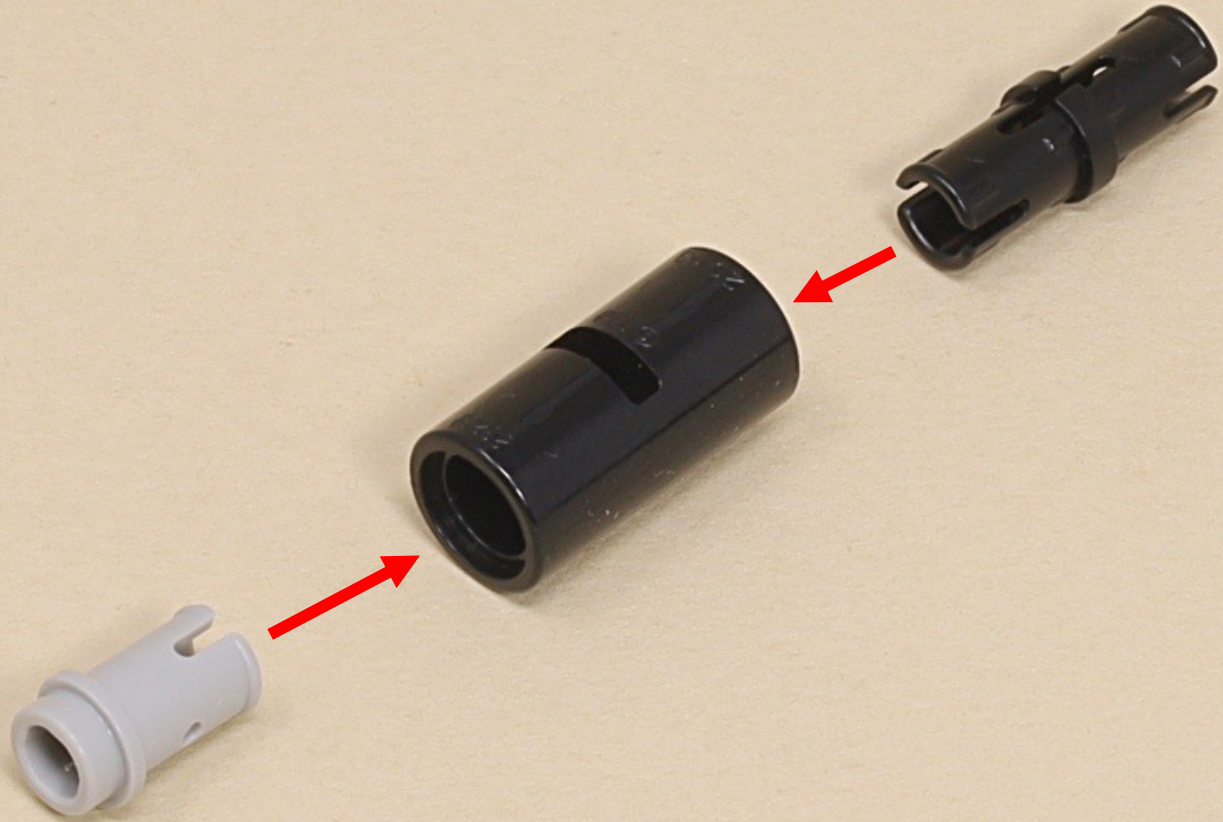




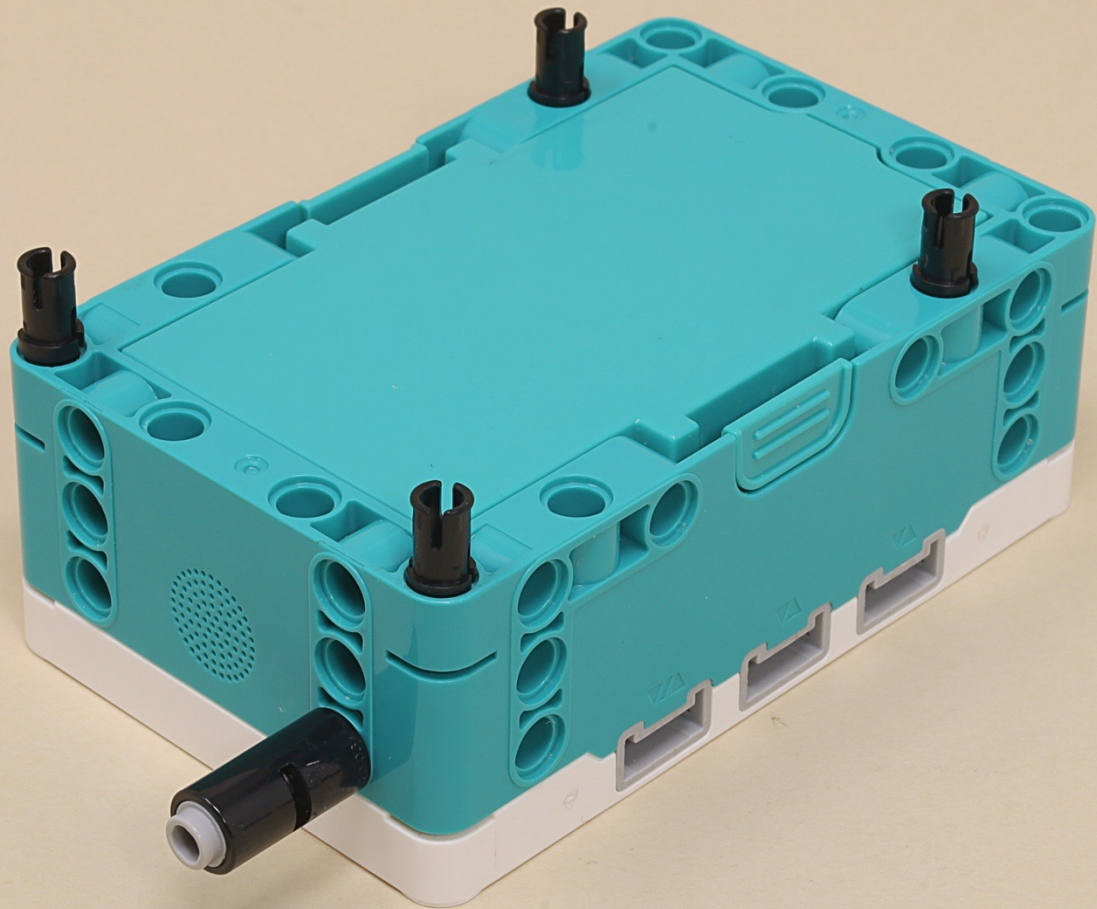


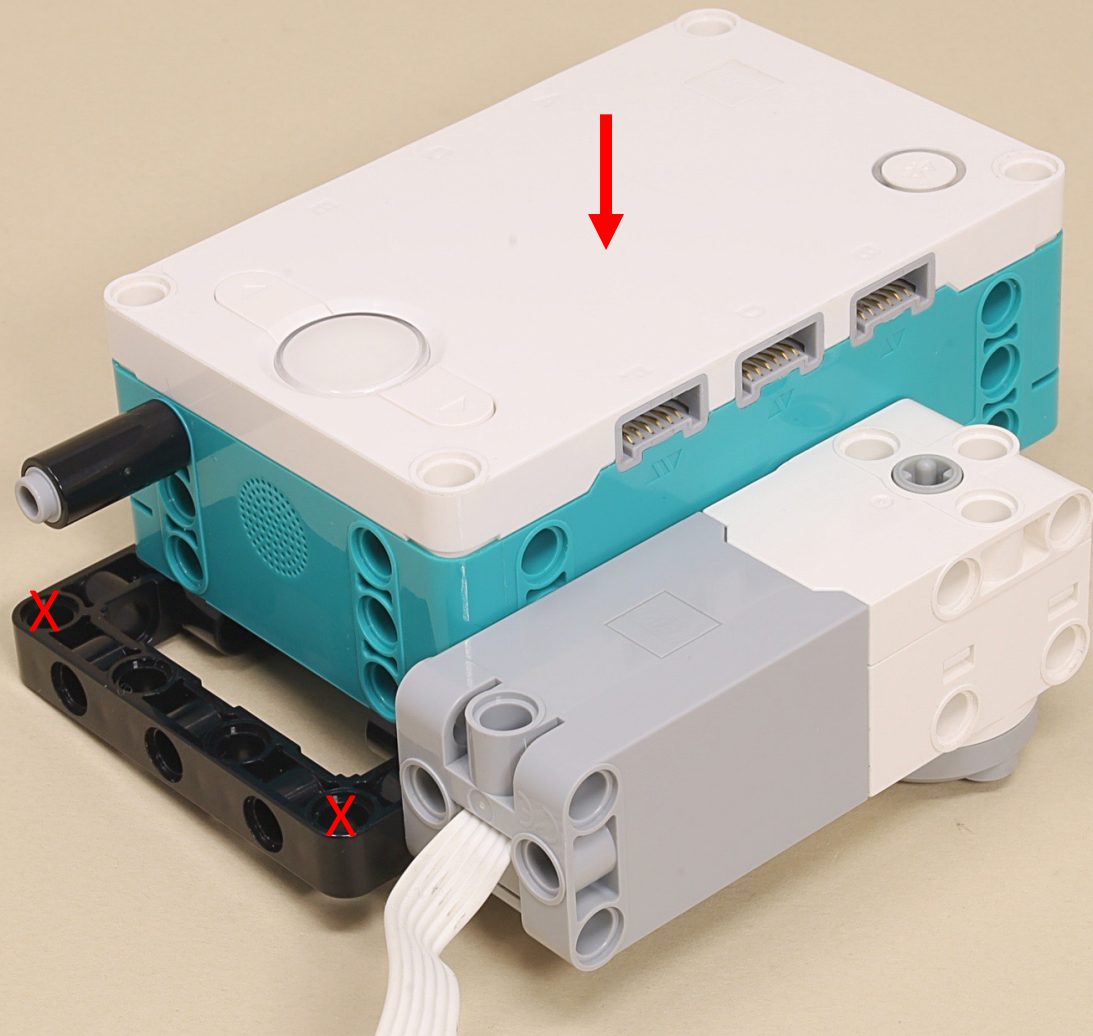


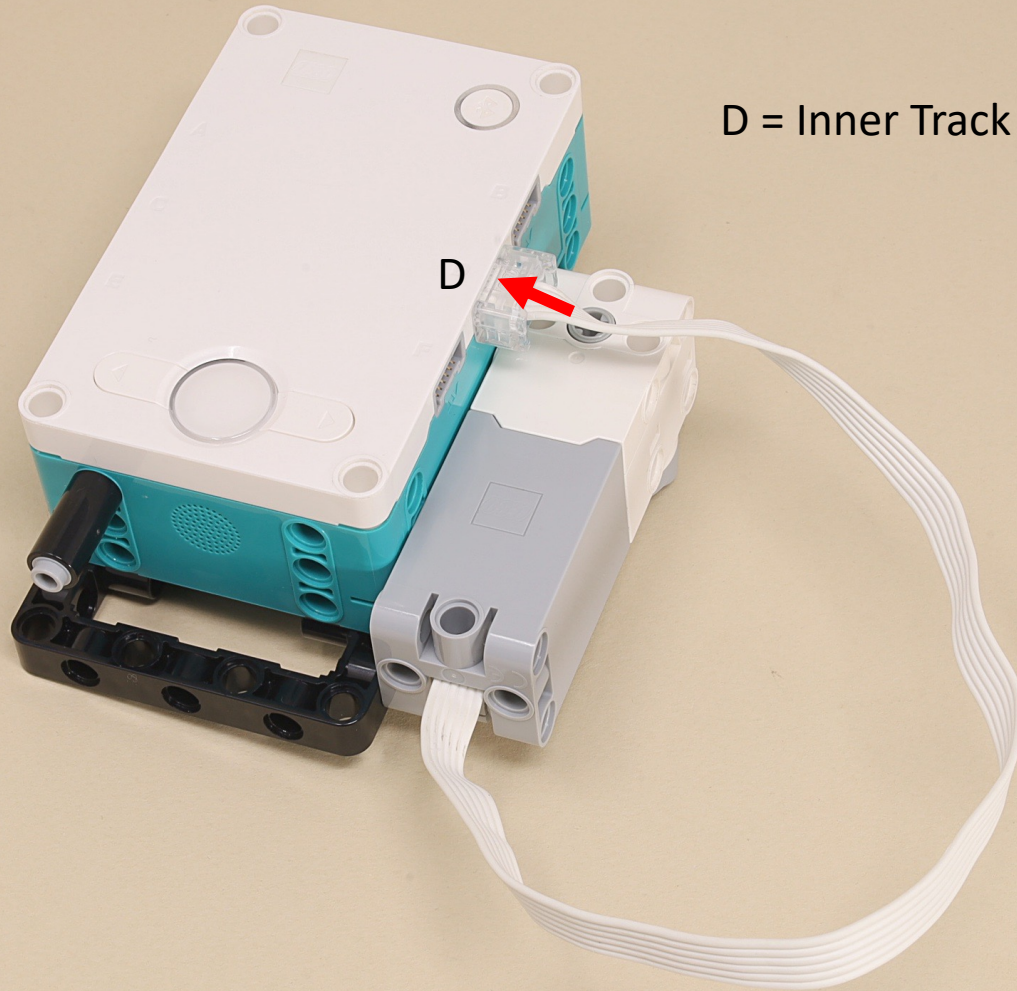












D = Inner Track Lift

D

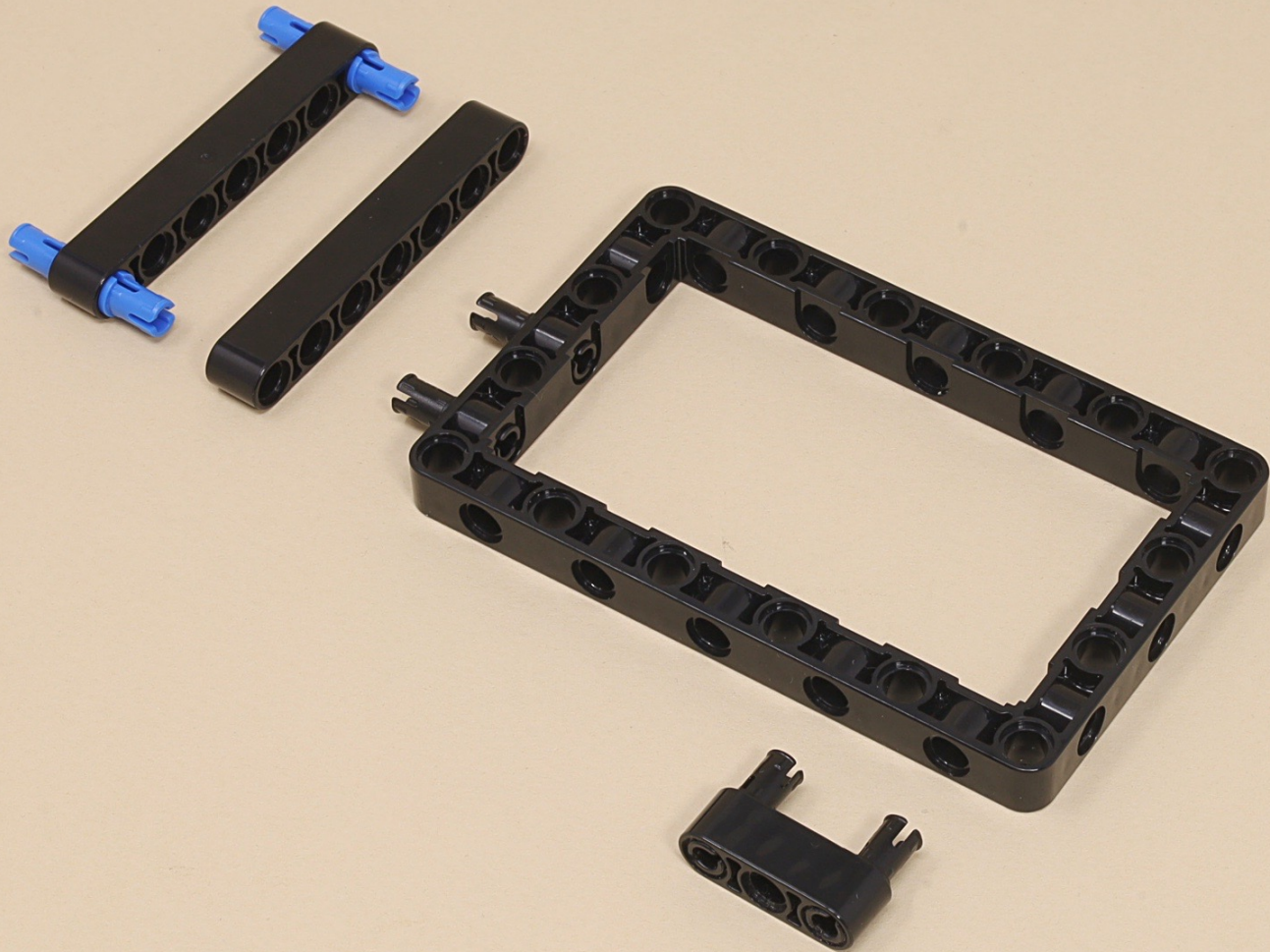


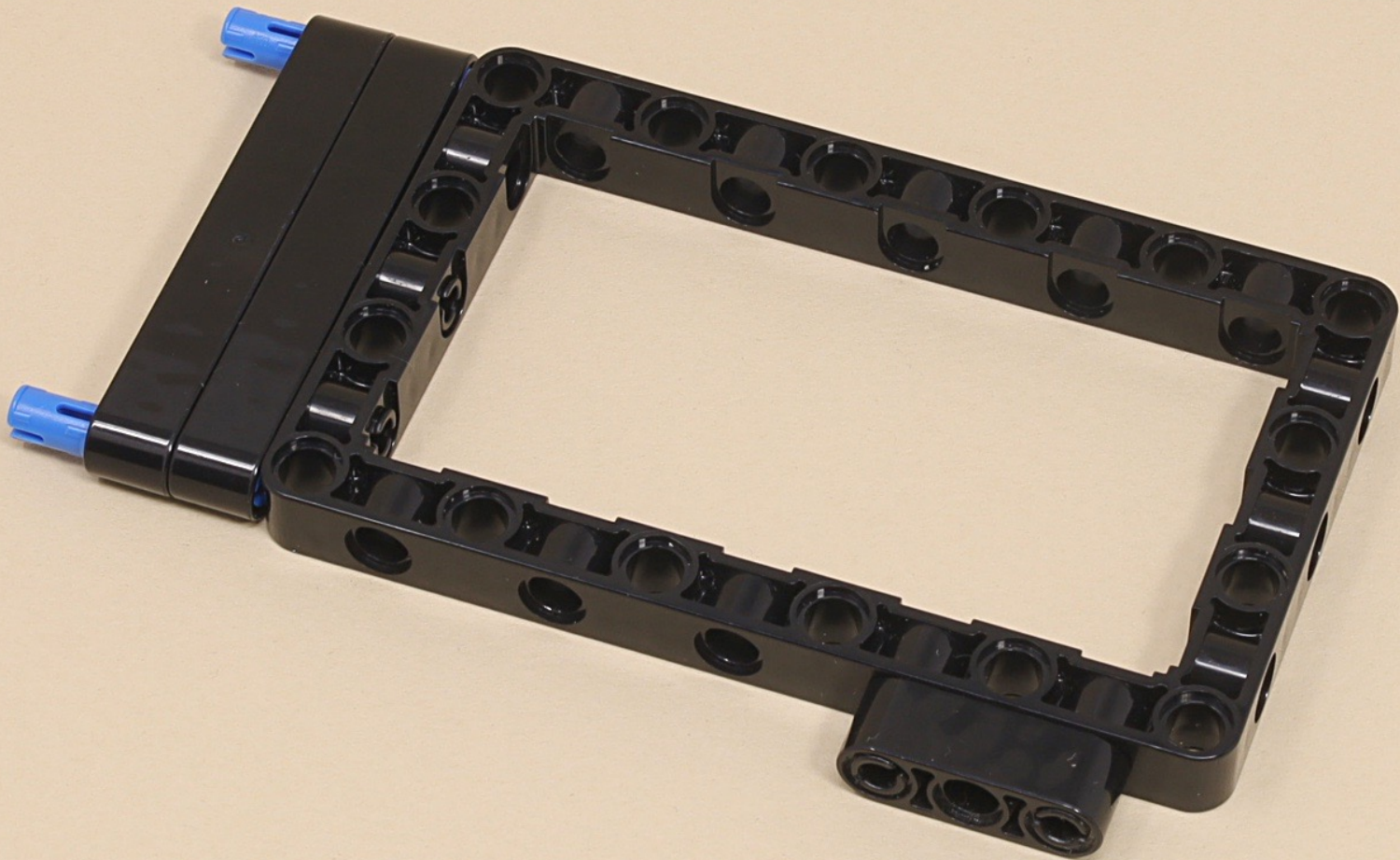
7

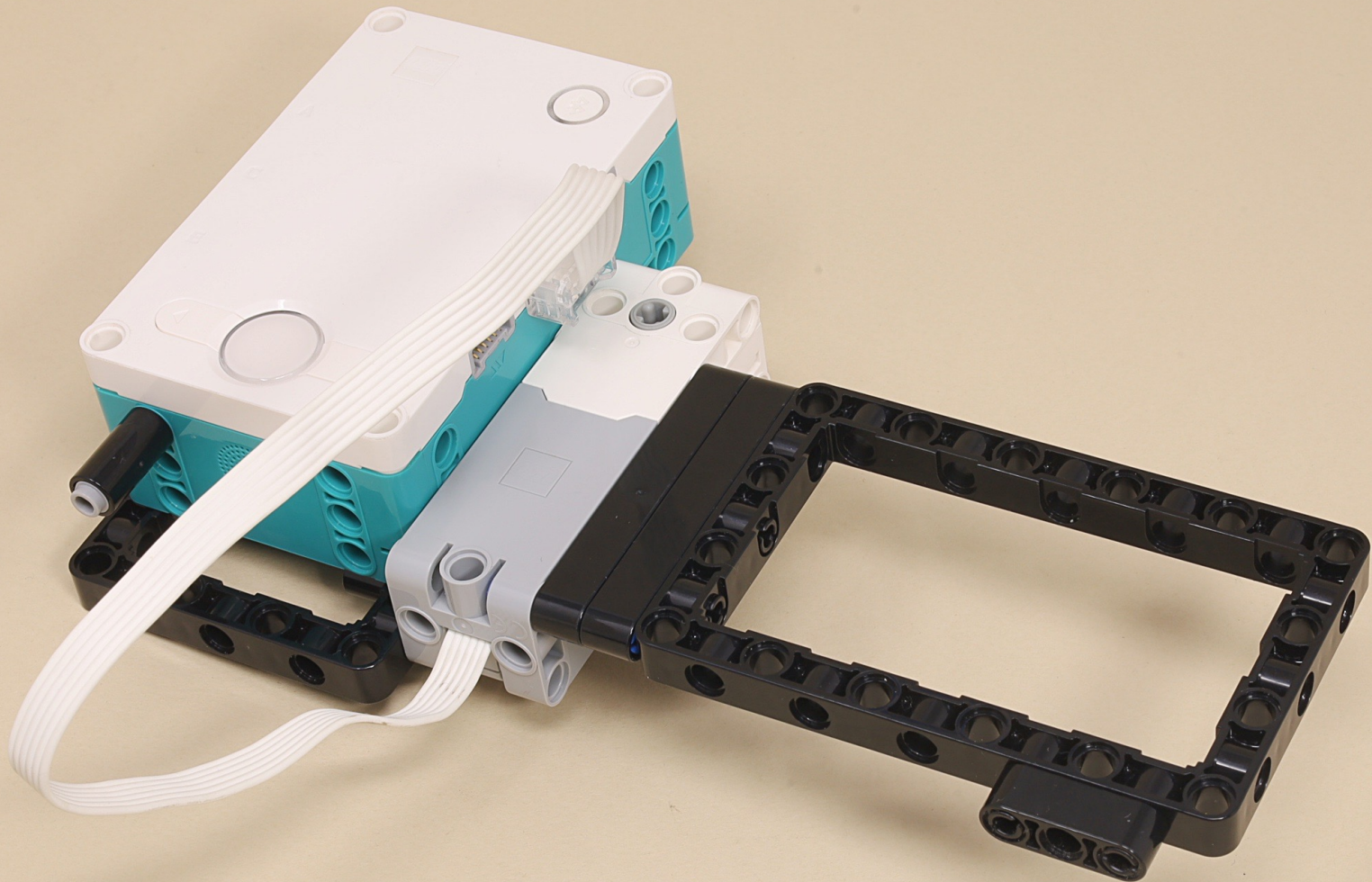


7









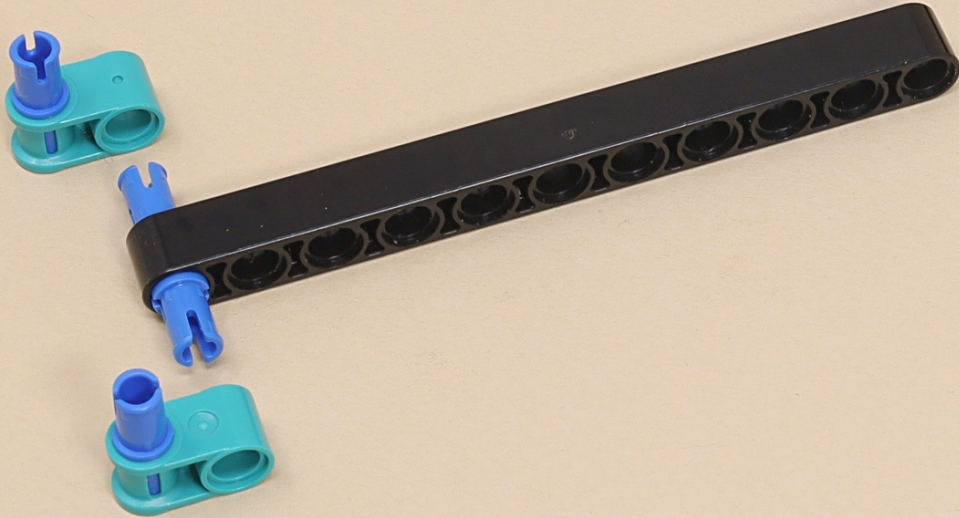
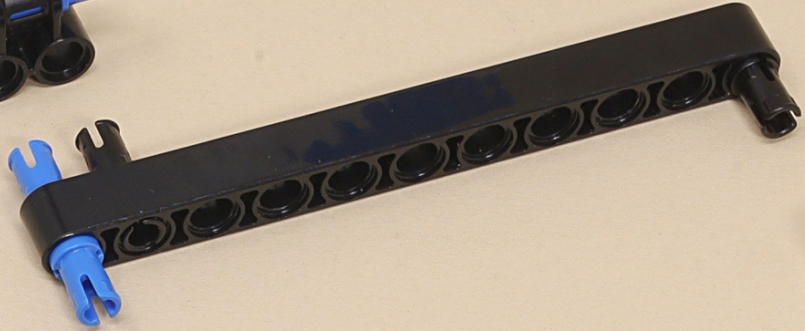


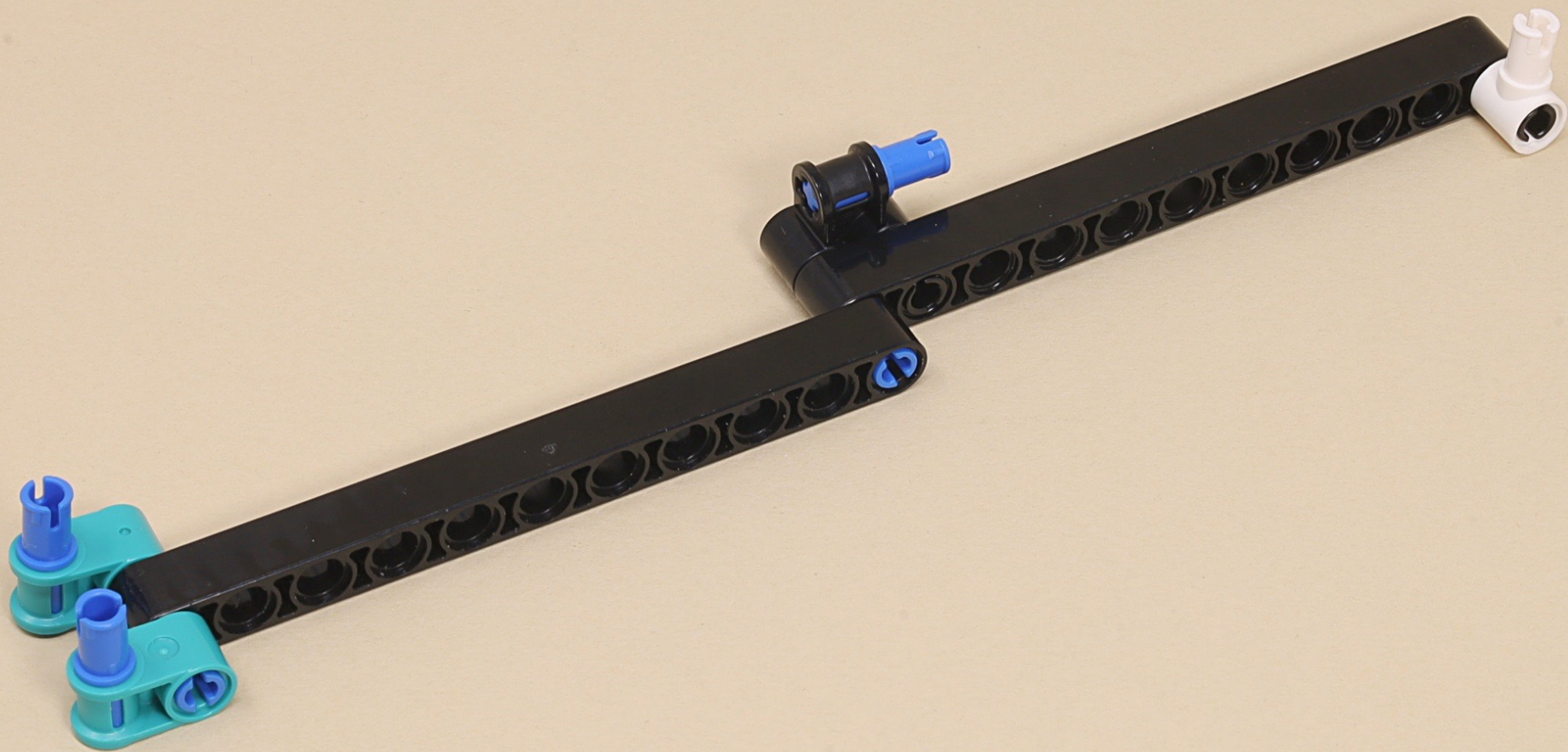
11

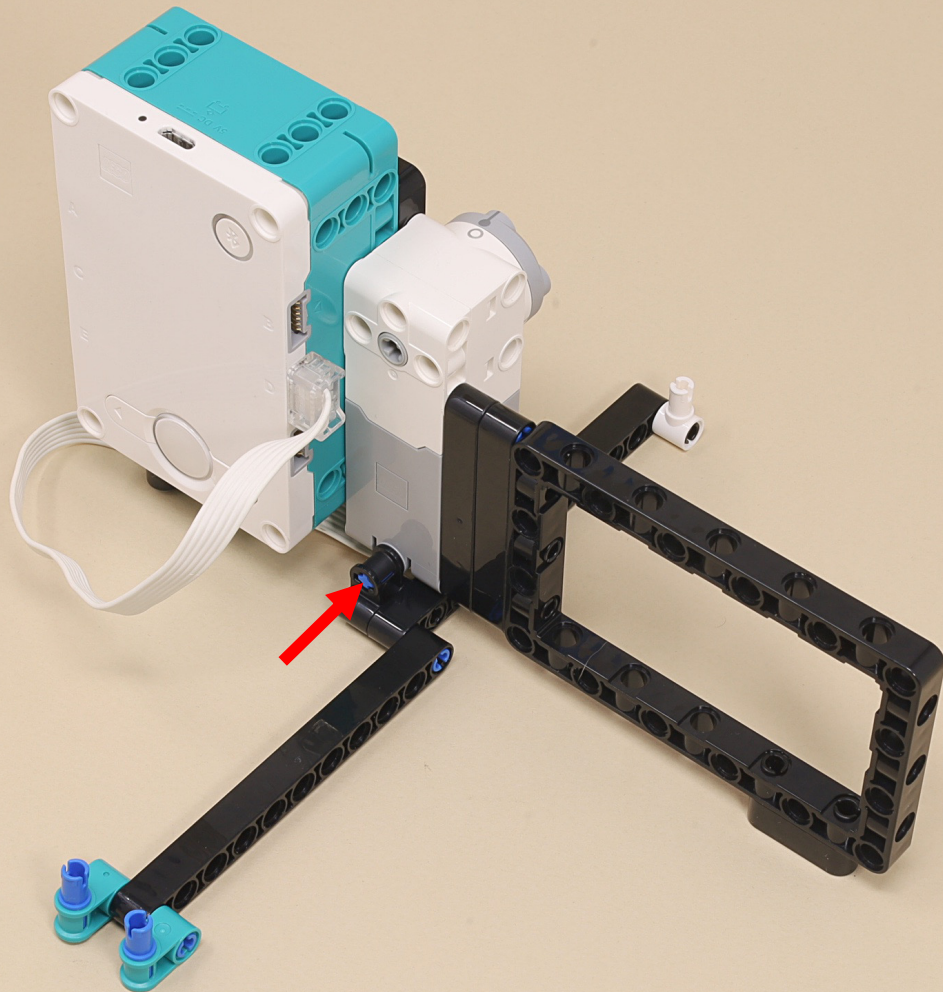


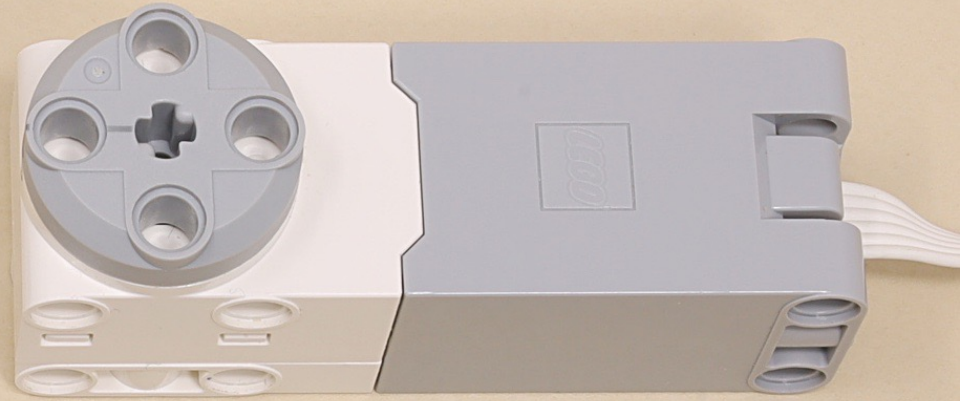
11



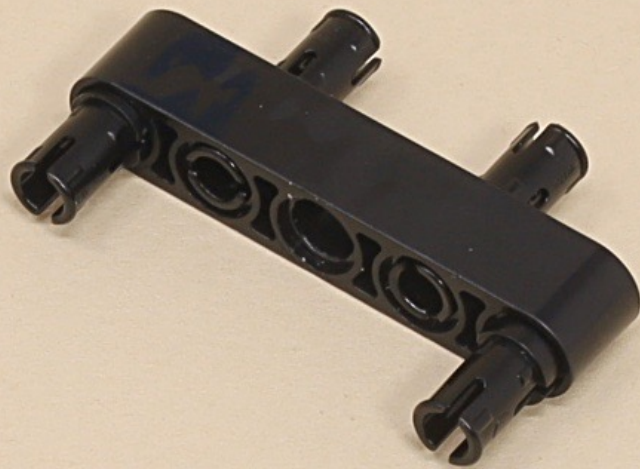


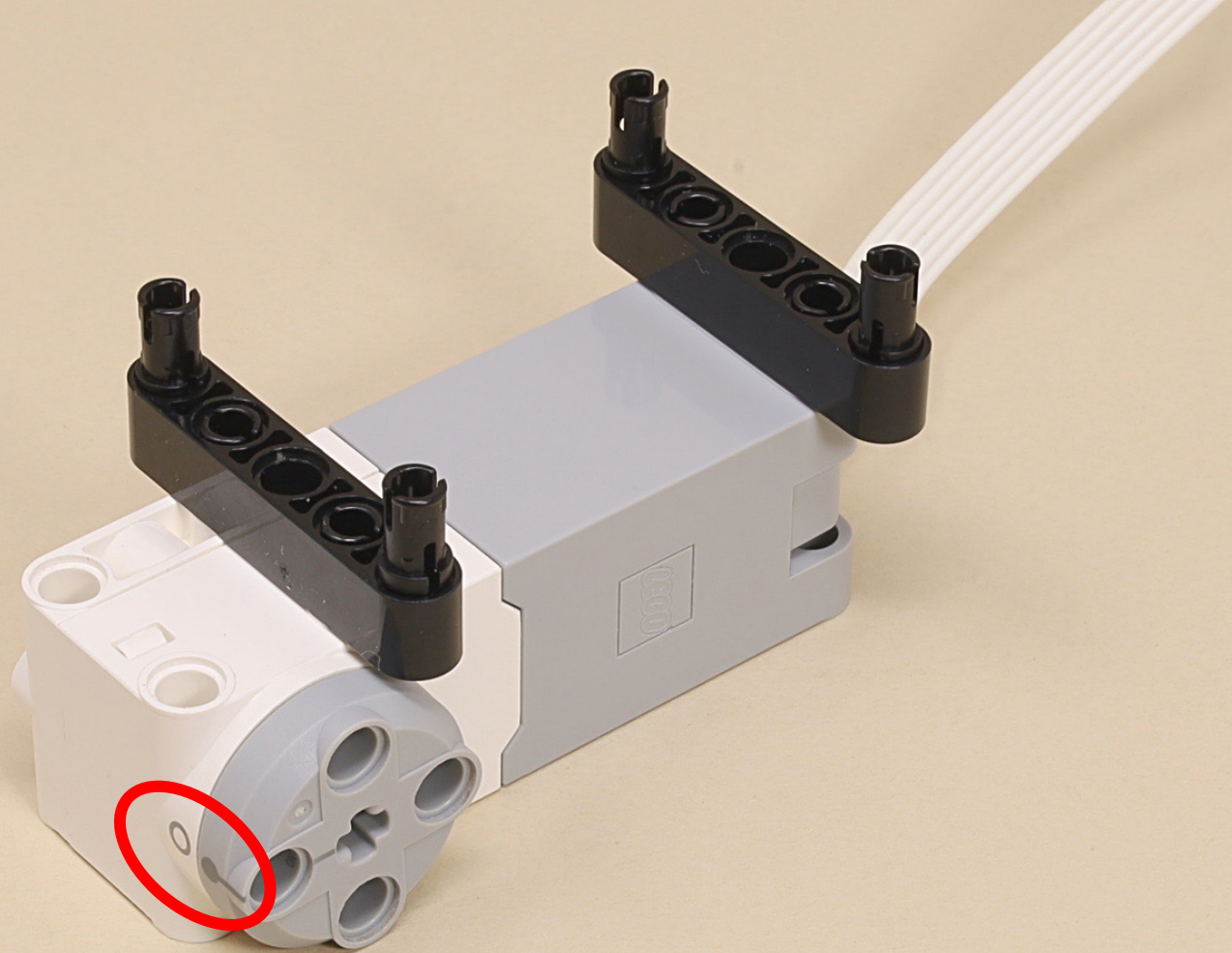


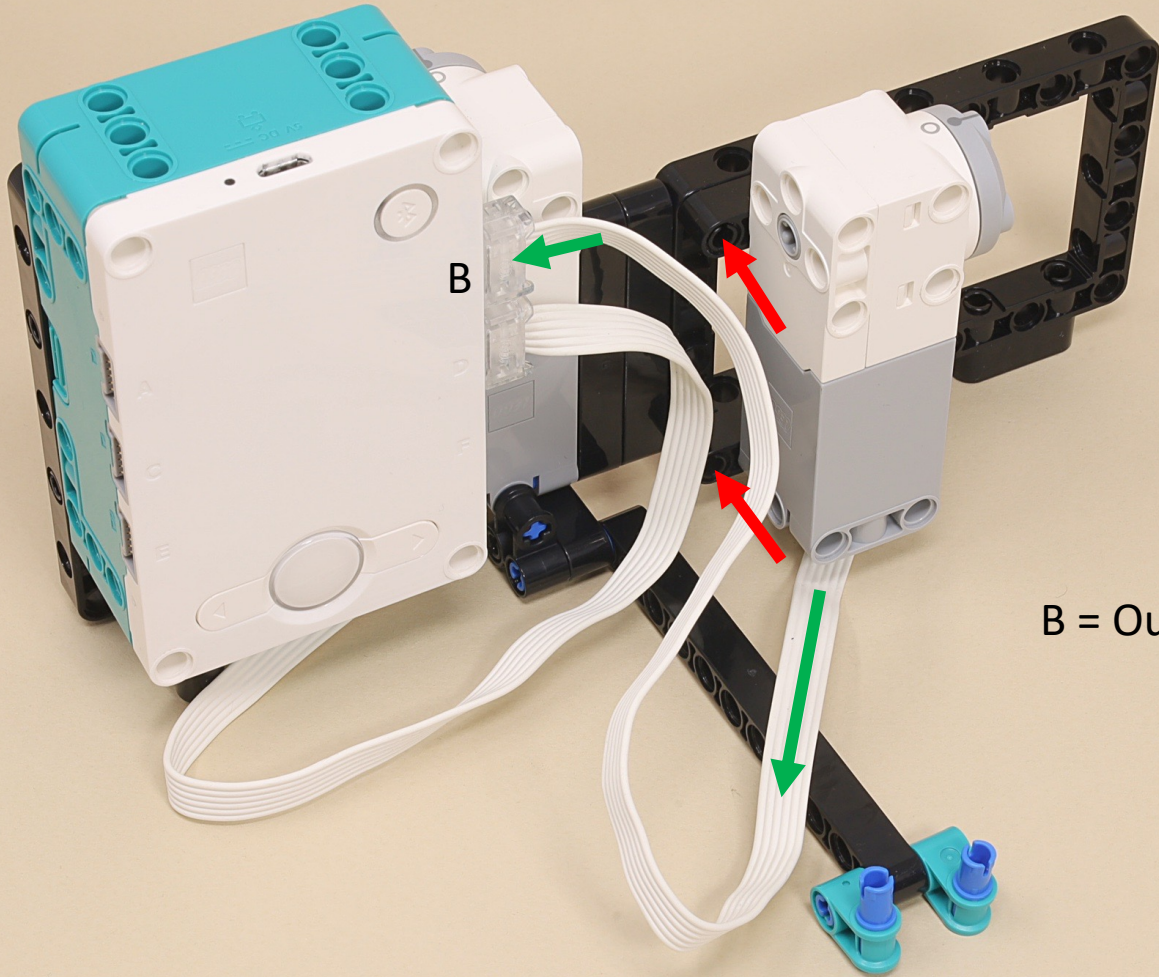




(8 x)







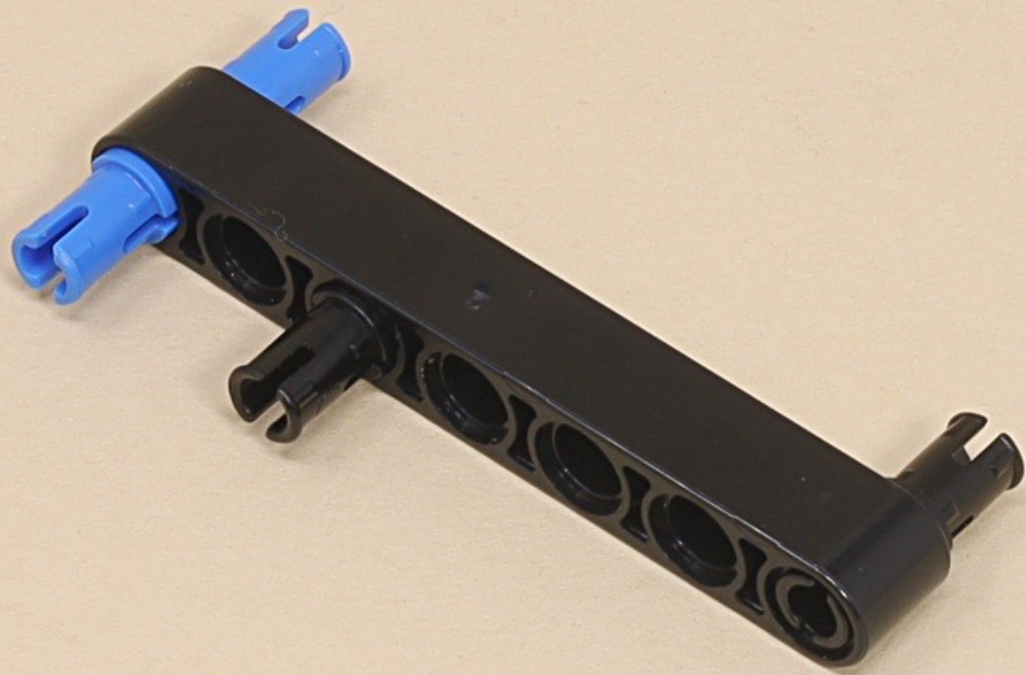
B

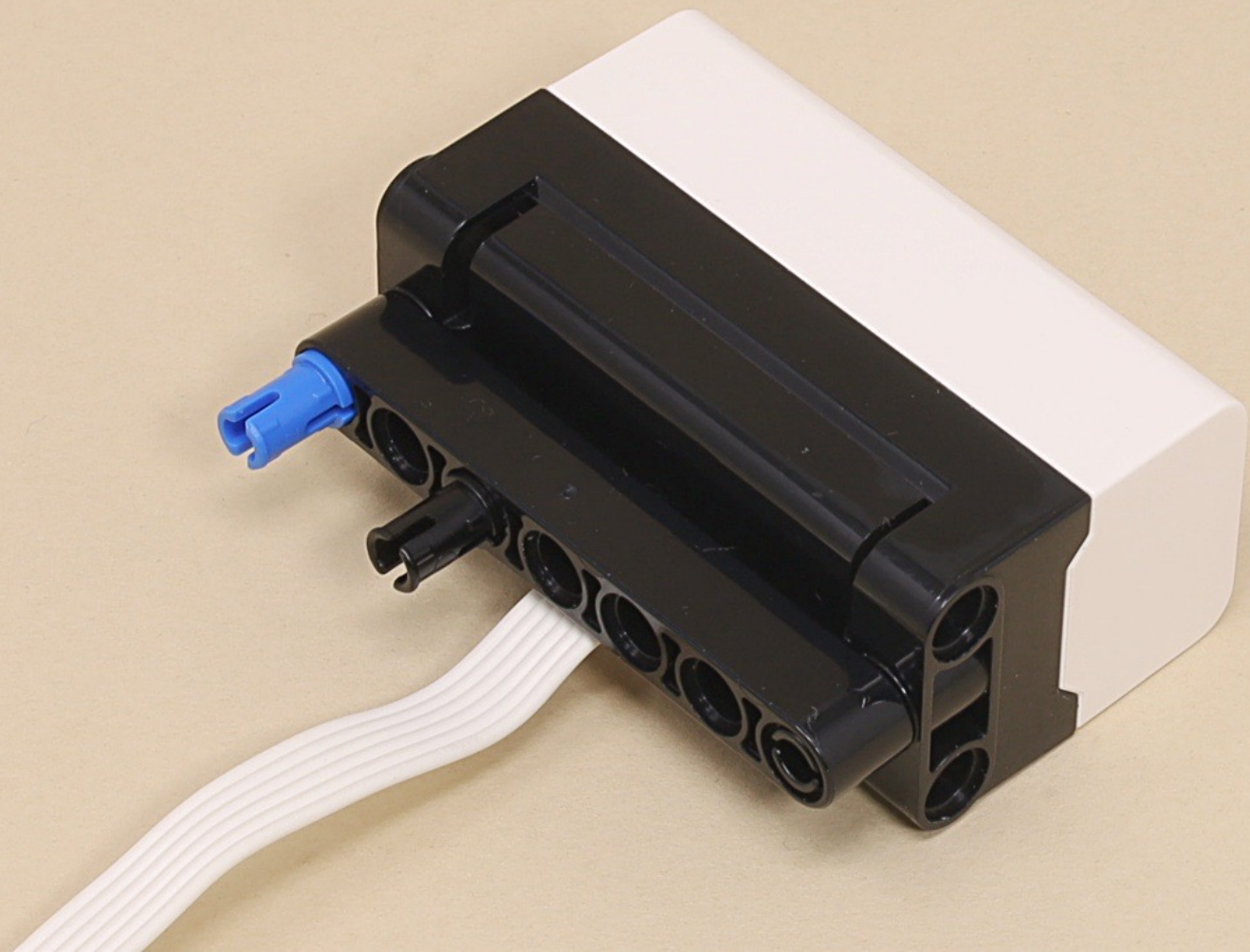
B = Outer Track Lift

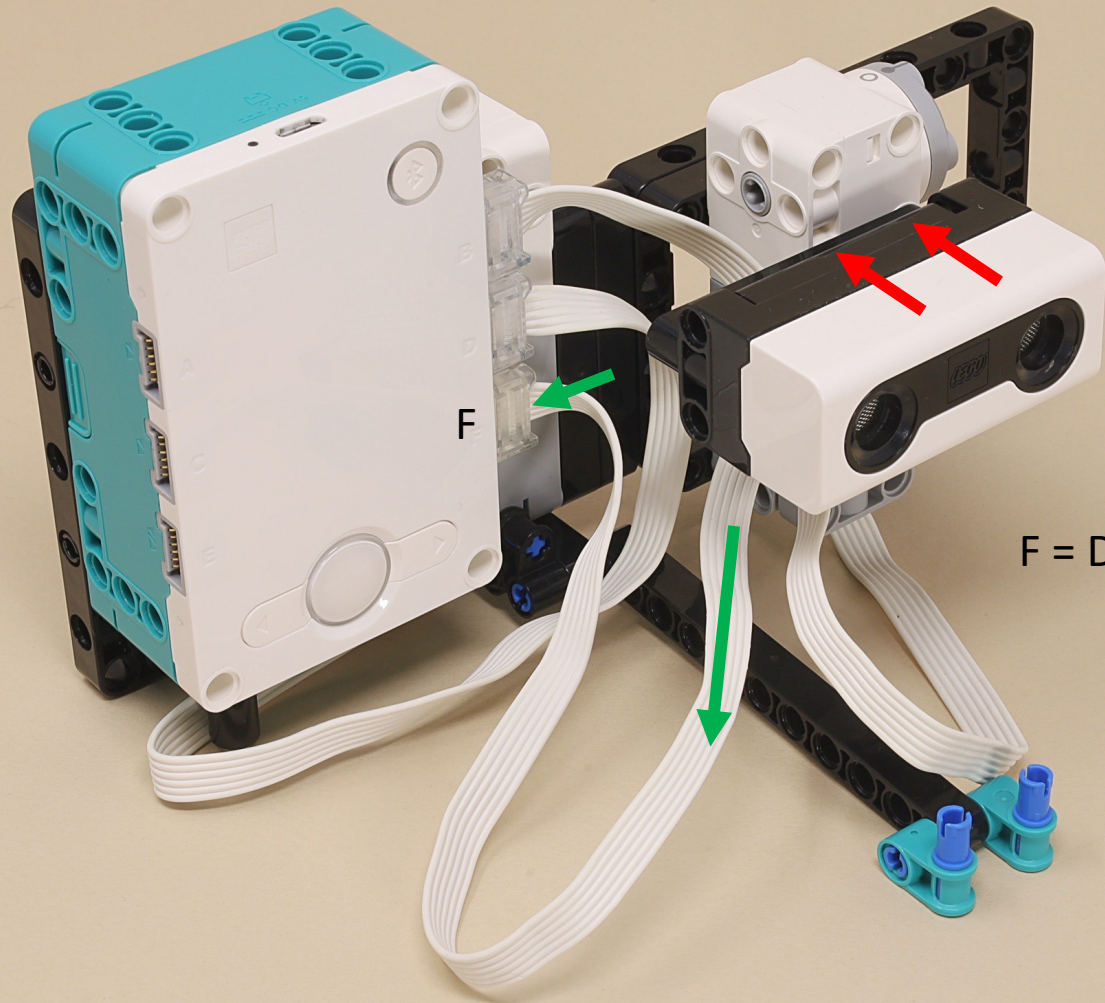


7

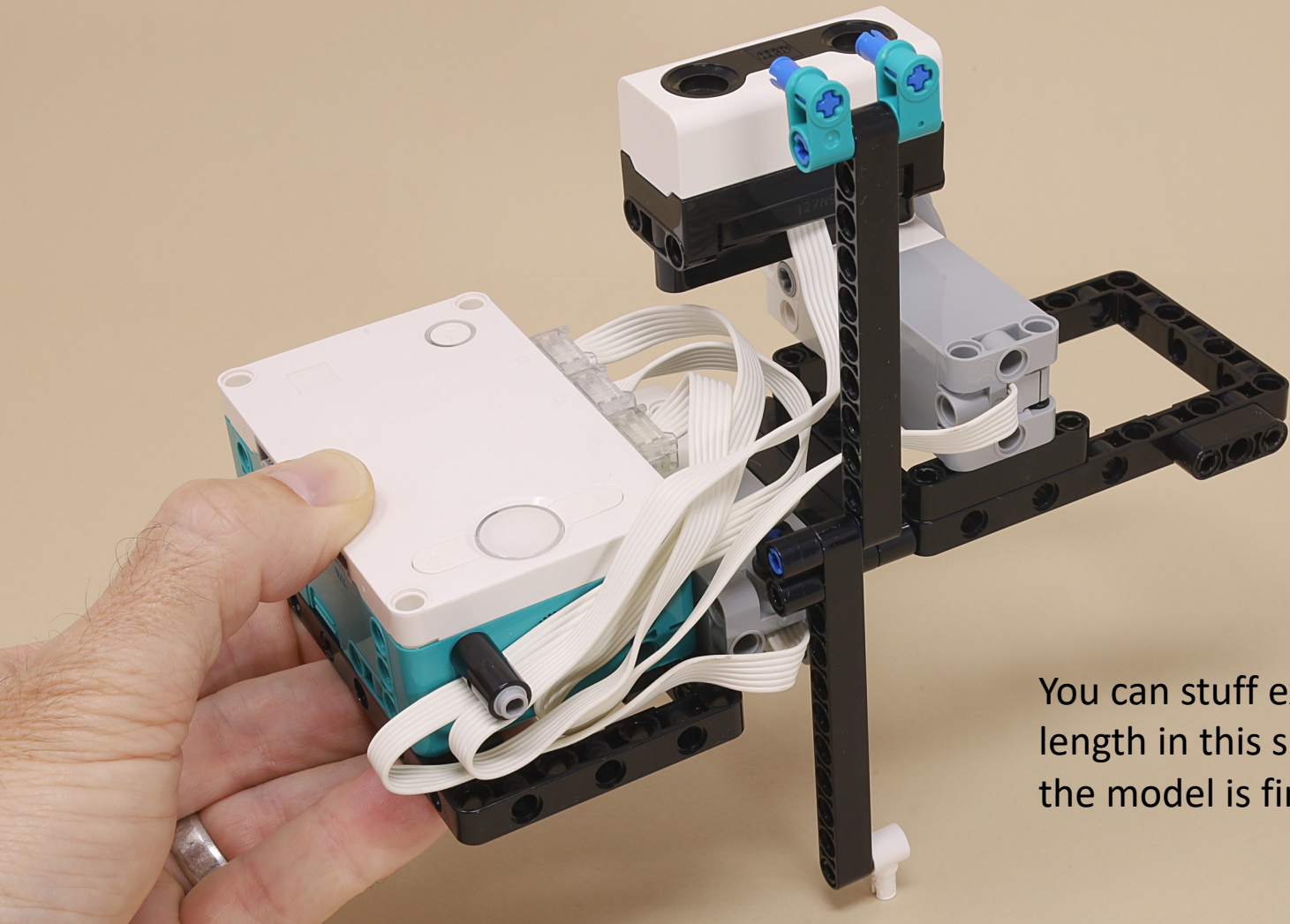




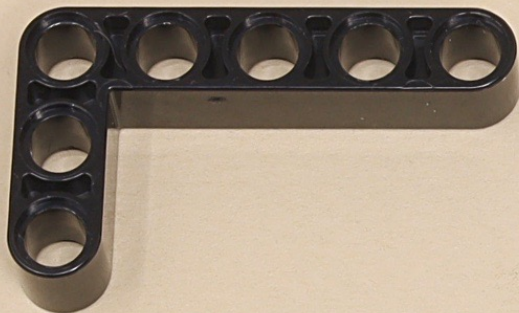




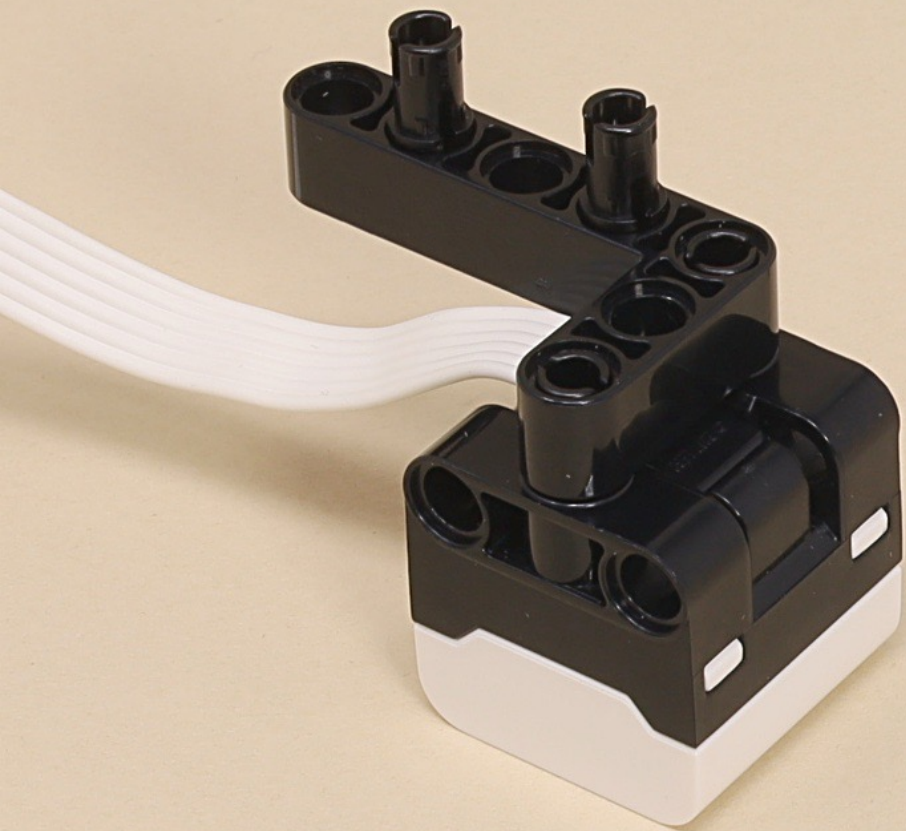
F = Distance Sensor

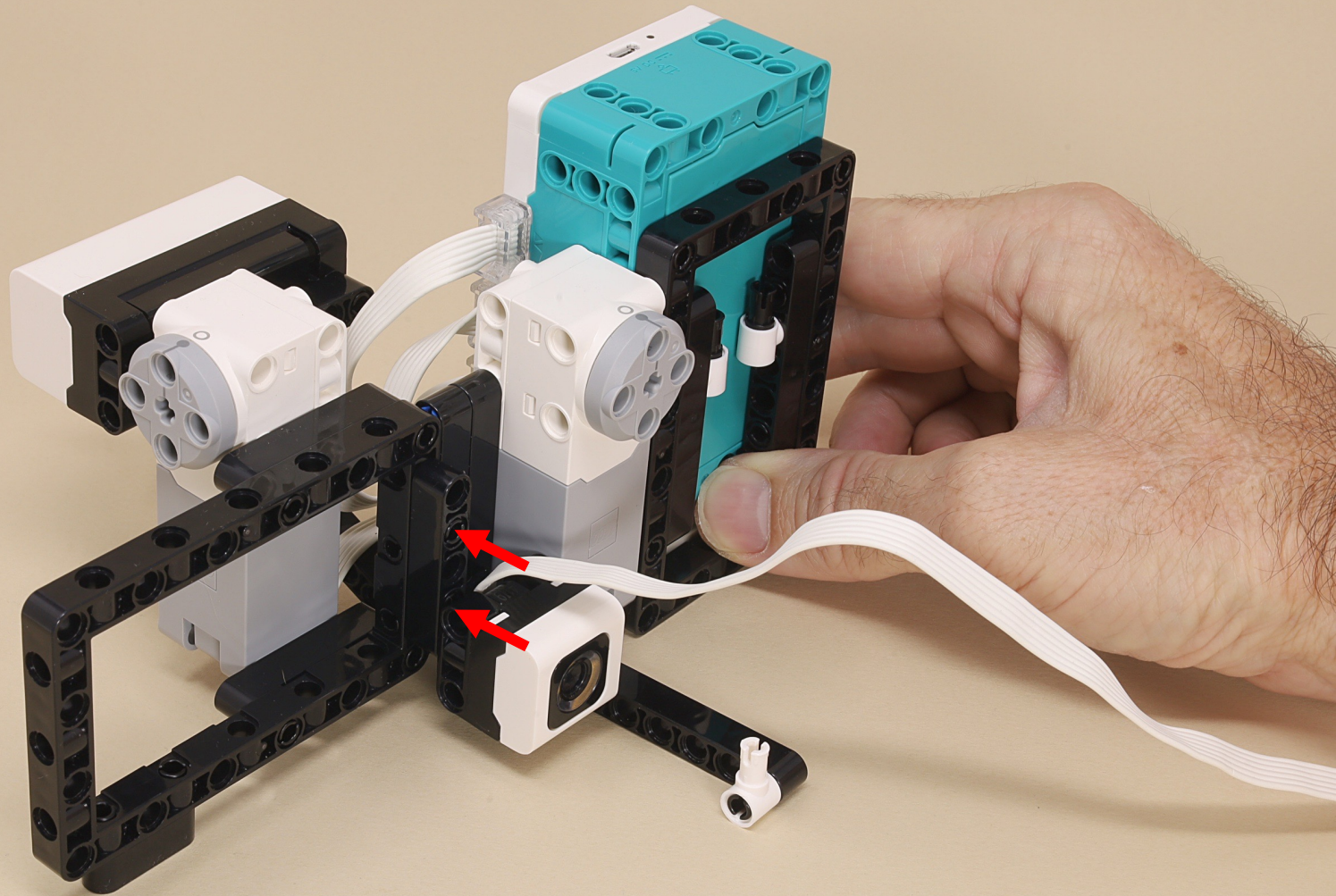


You can stuff extra wire length in this space when the model is finished.

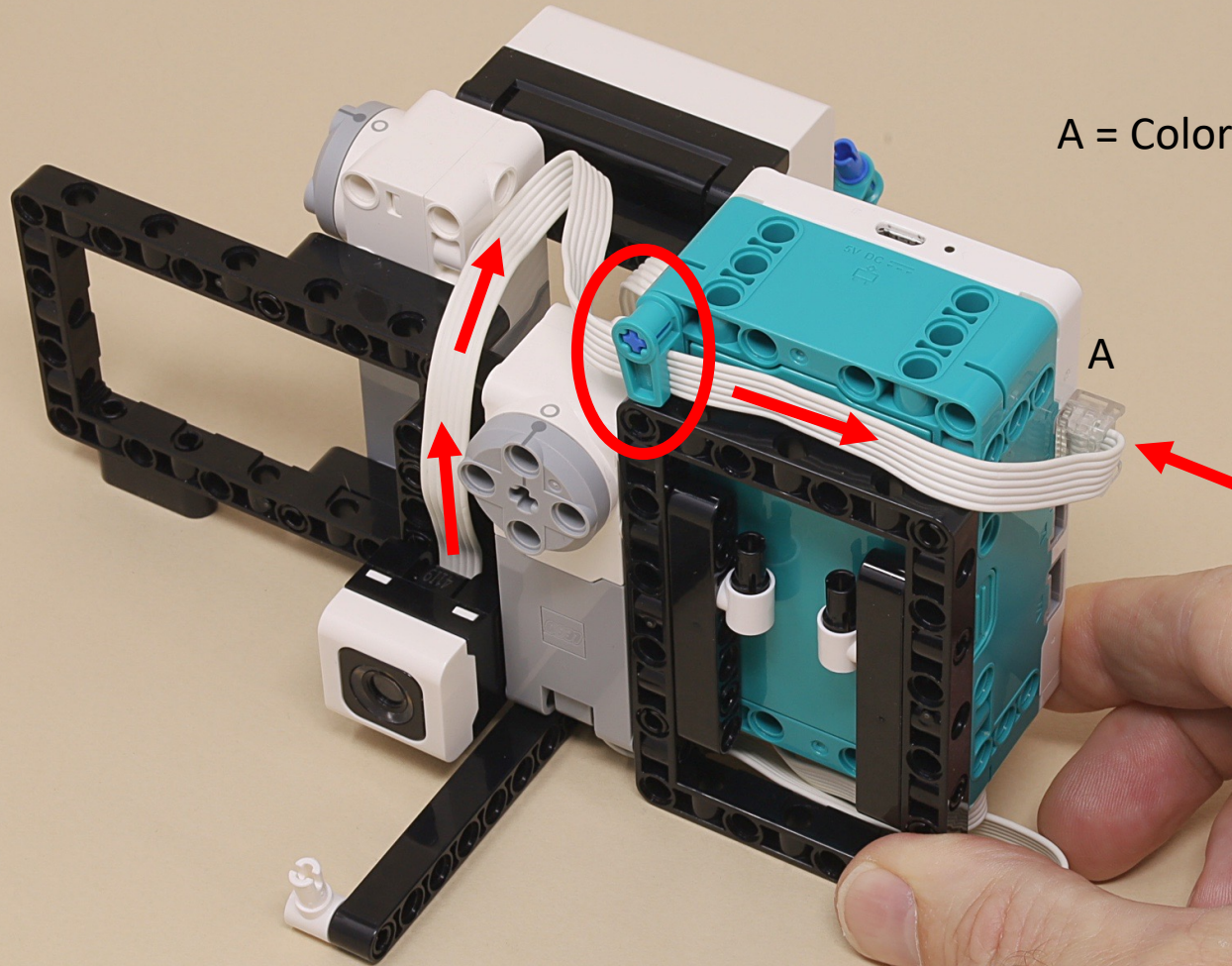




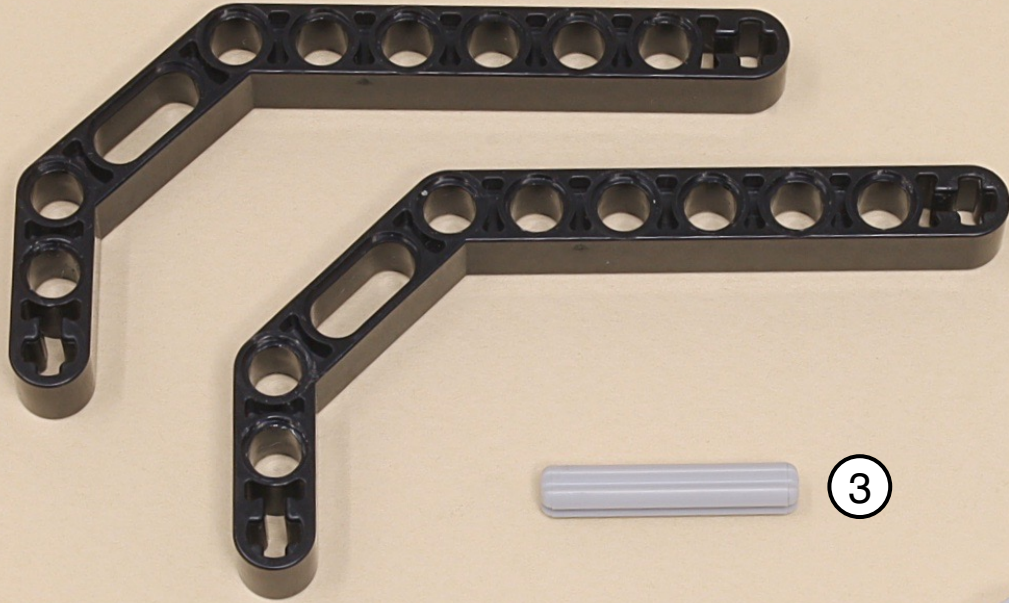




A = Color Sensor

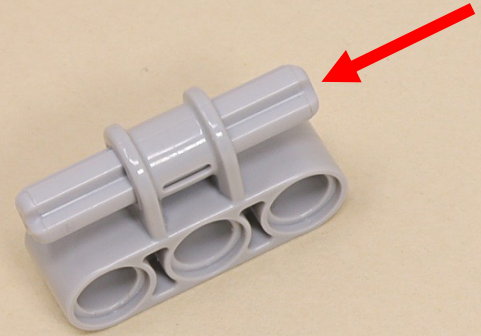


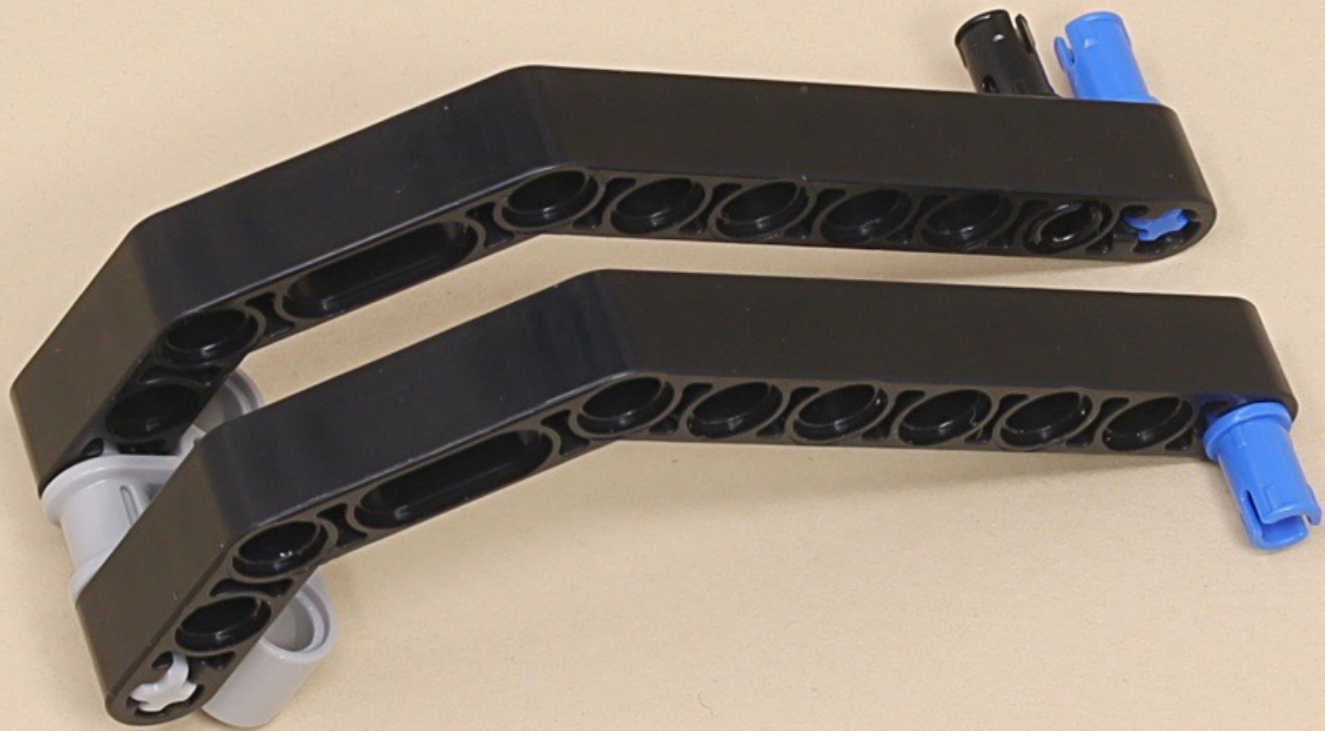
A

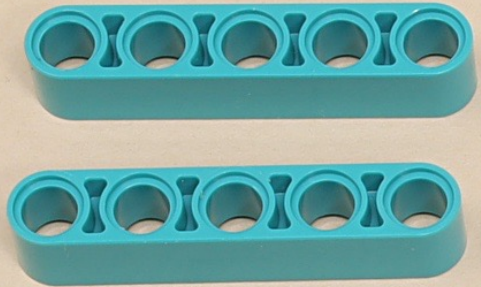


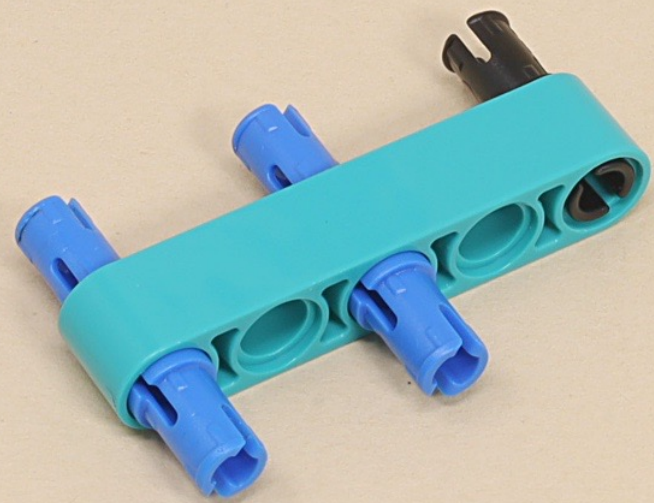
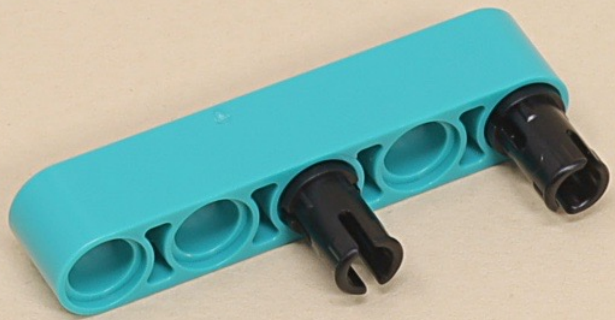
3

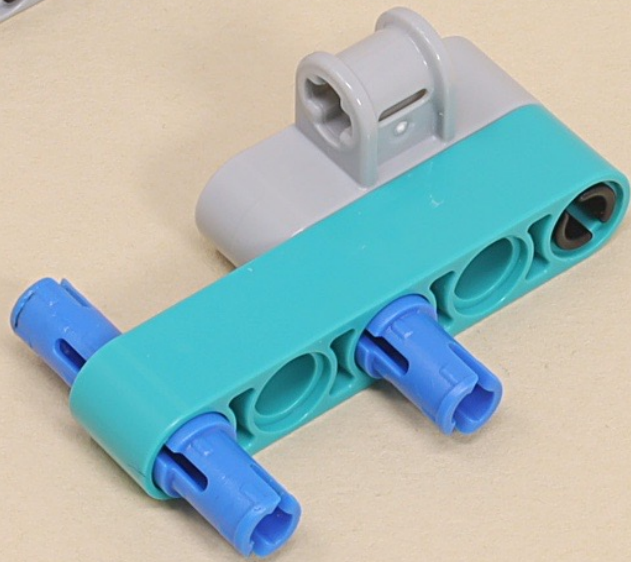
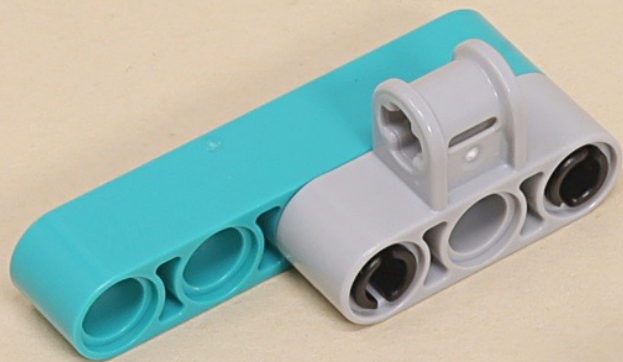


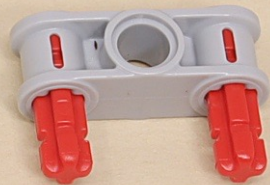
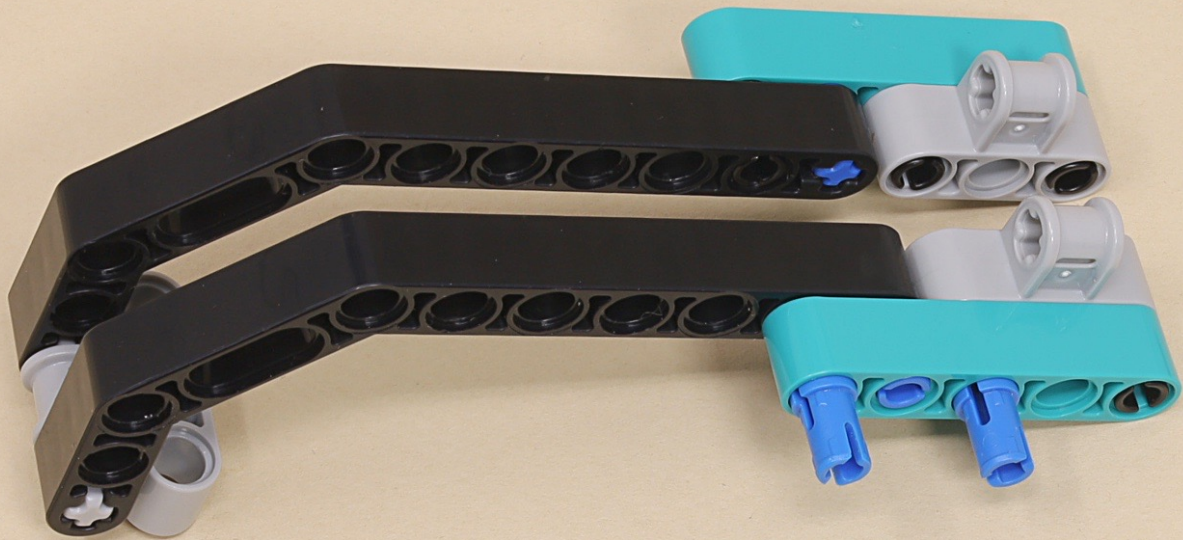


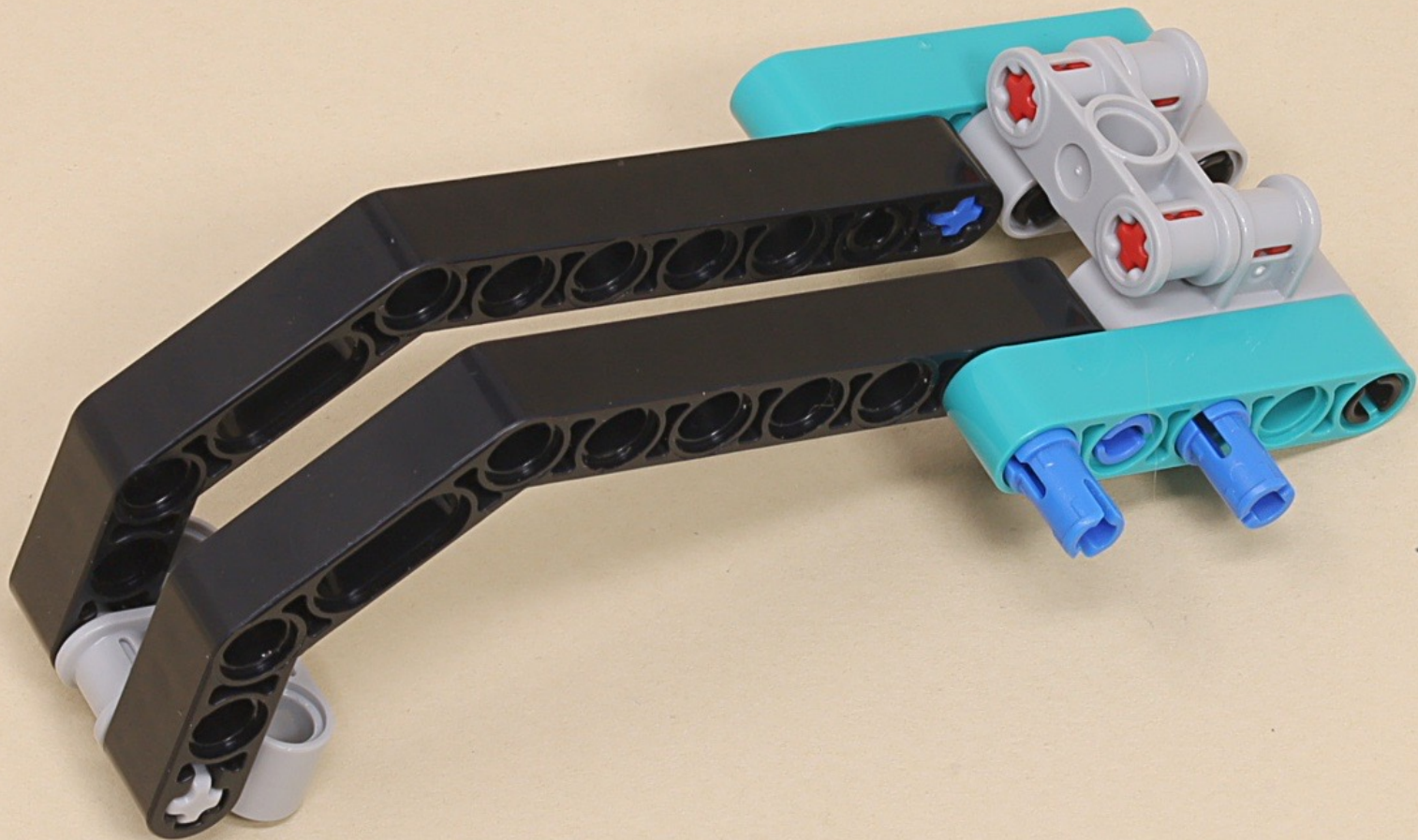


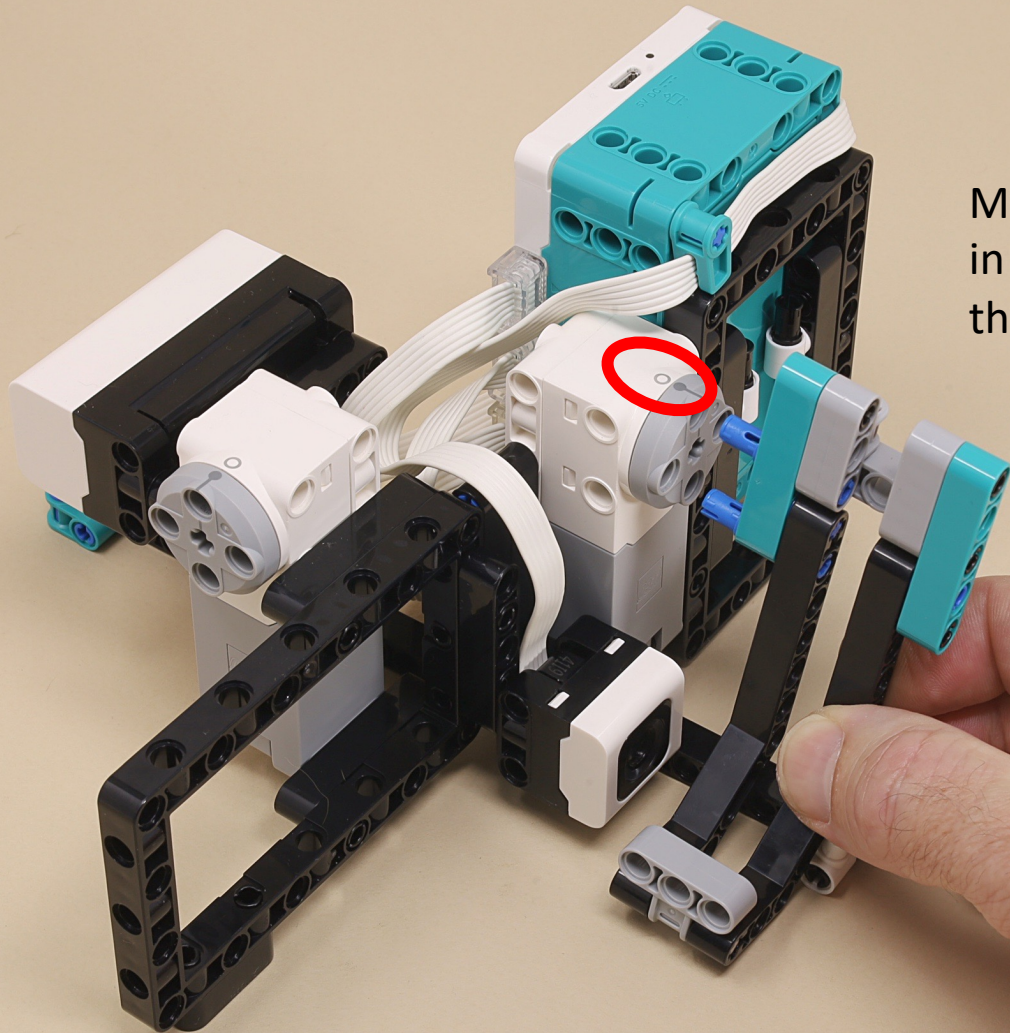




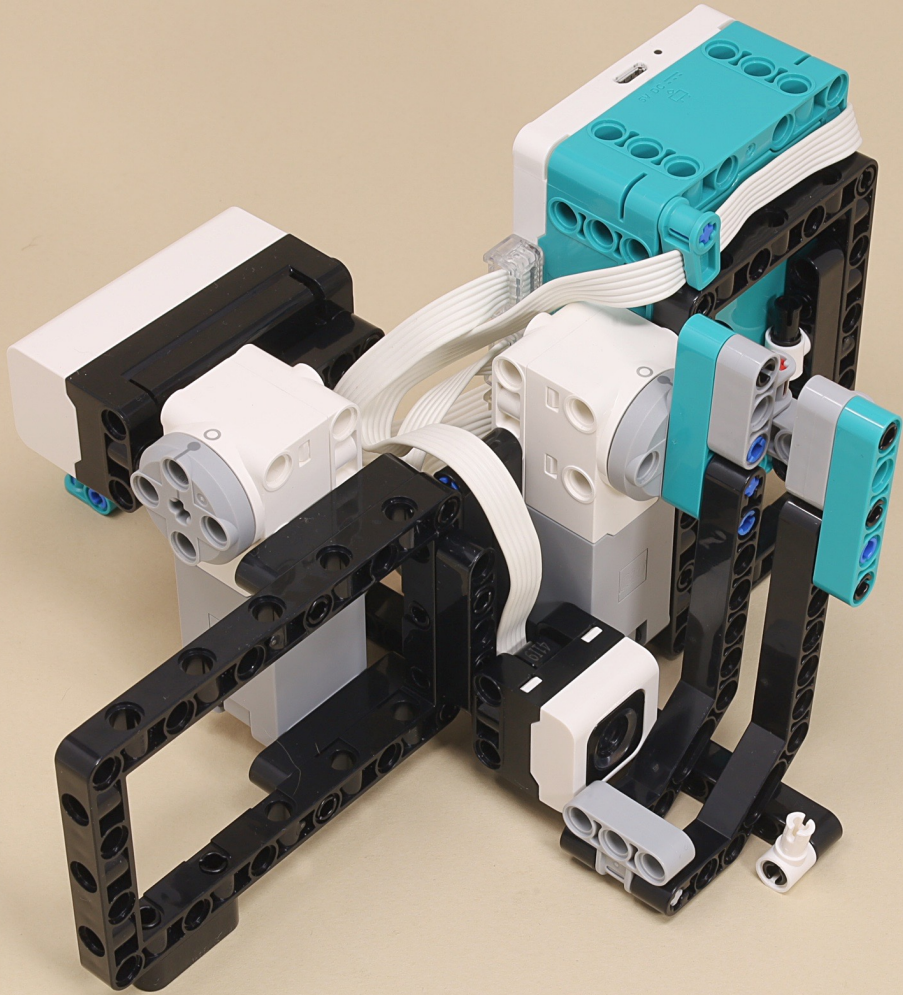


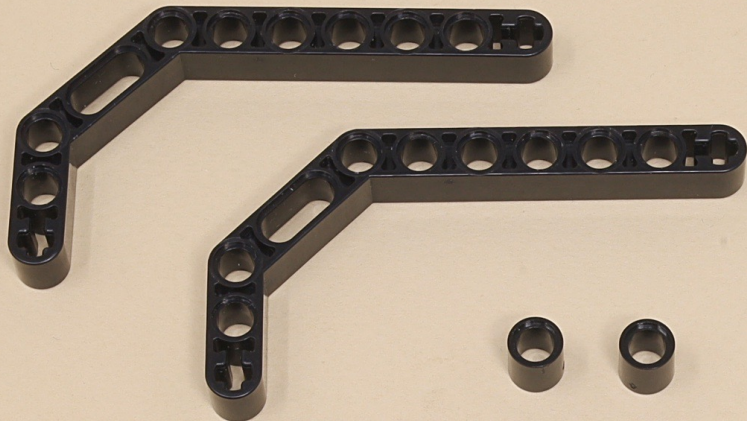






Make sure the motor is in its zero position when this lift arm is vertical.





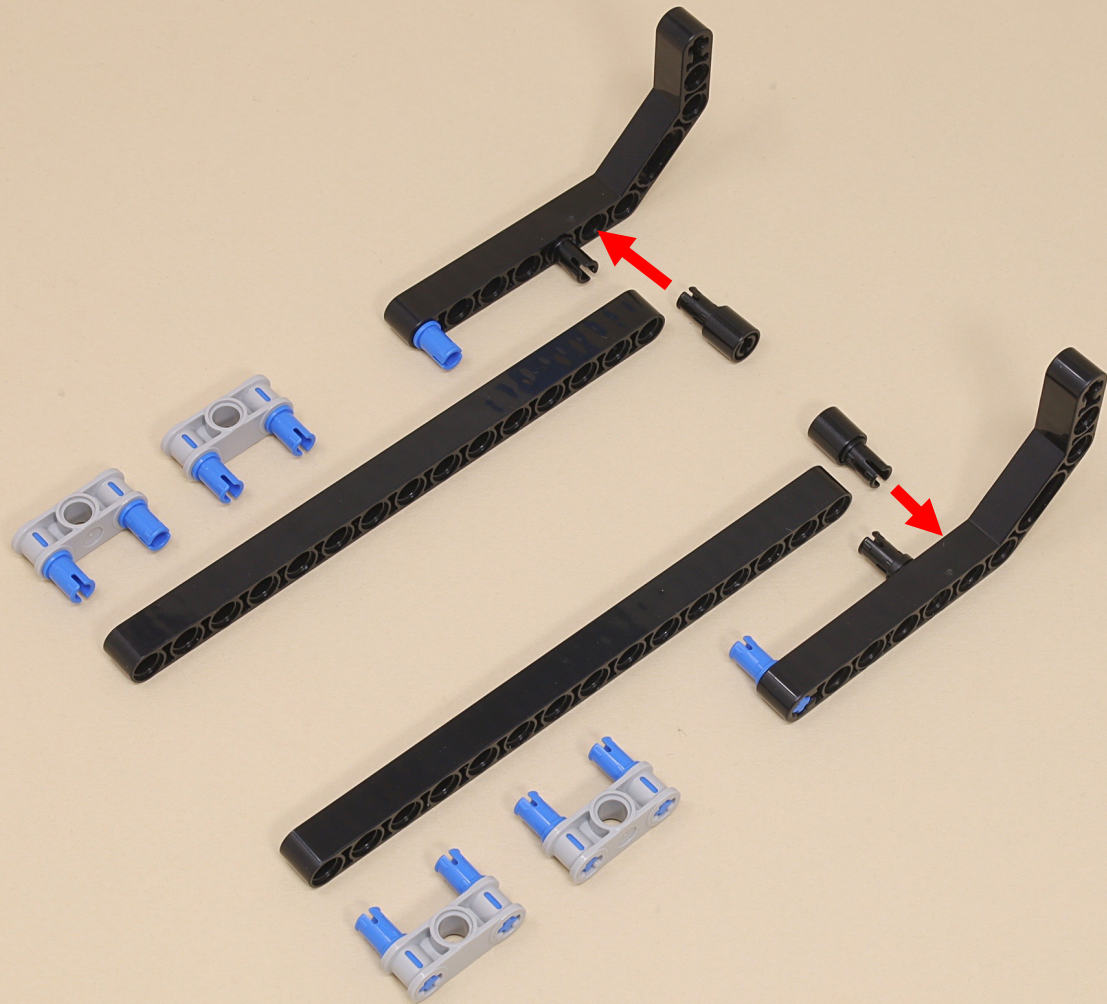
15



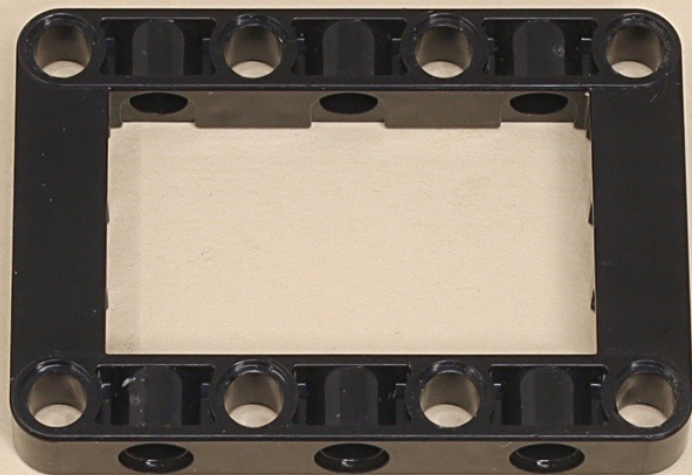
15



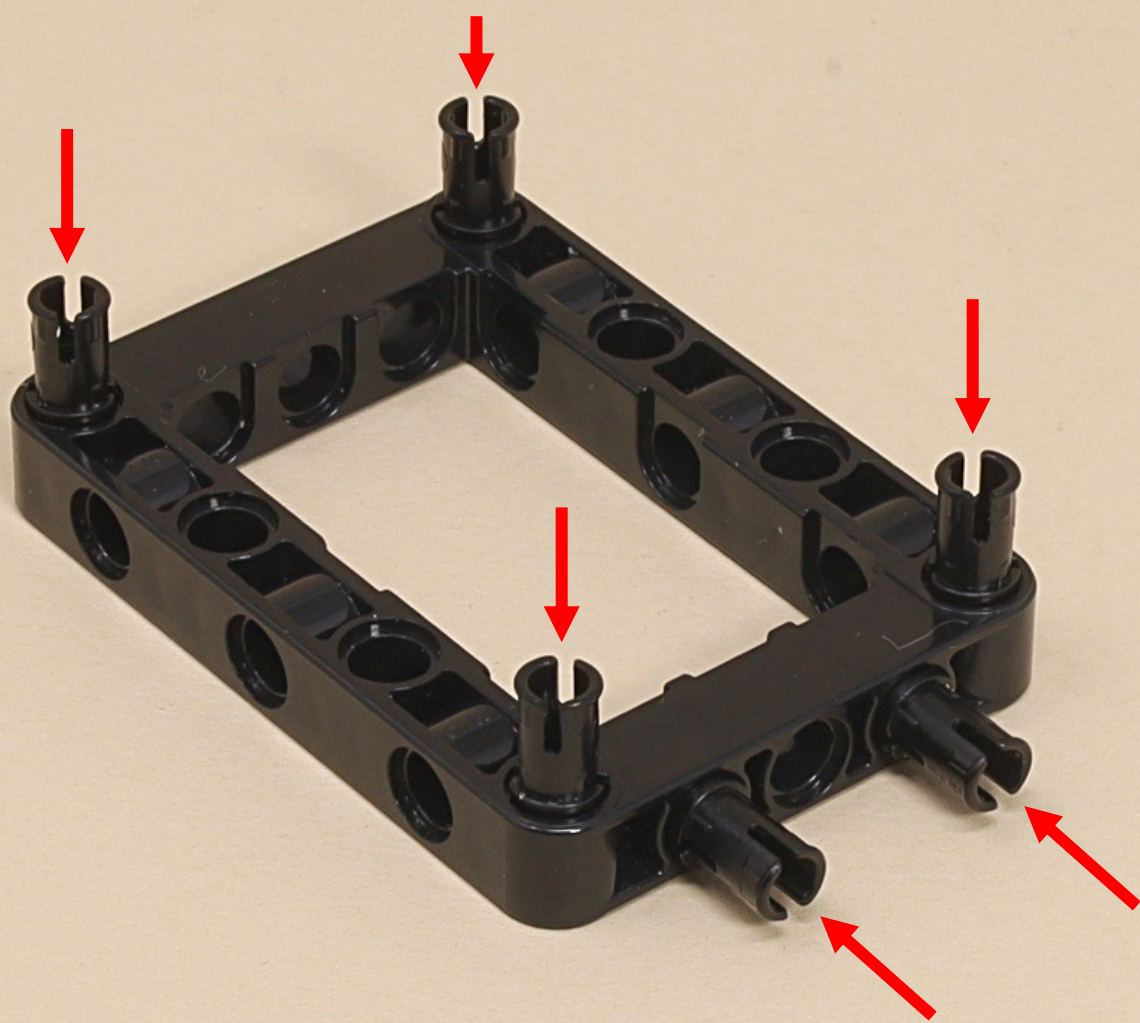
(10 x)

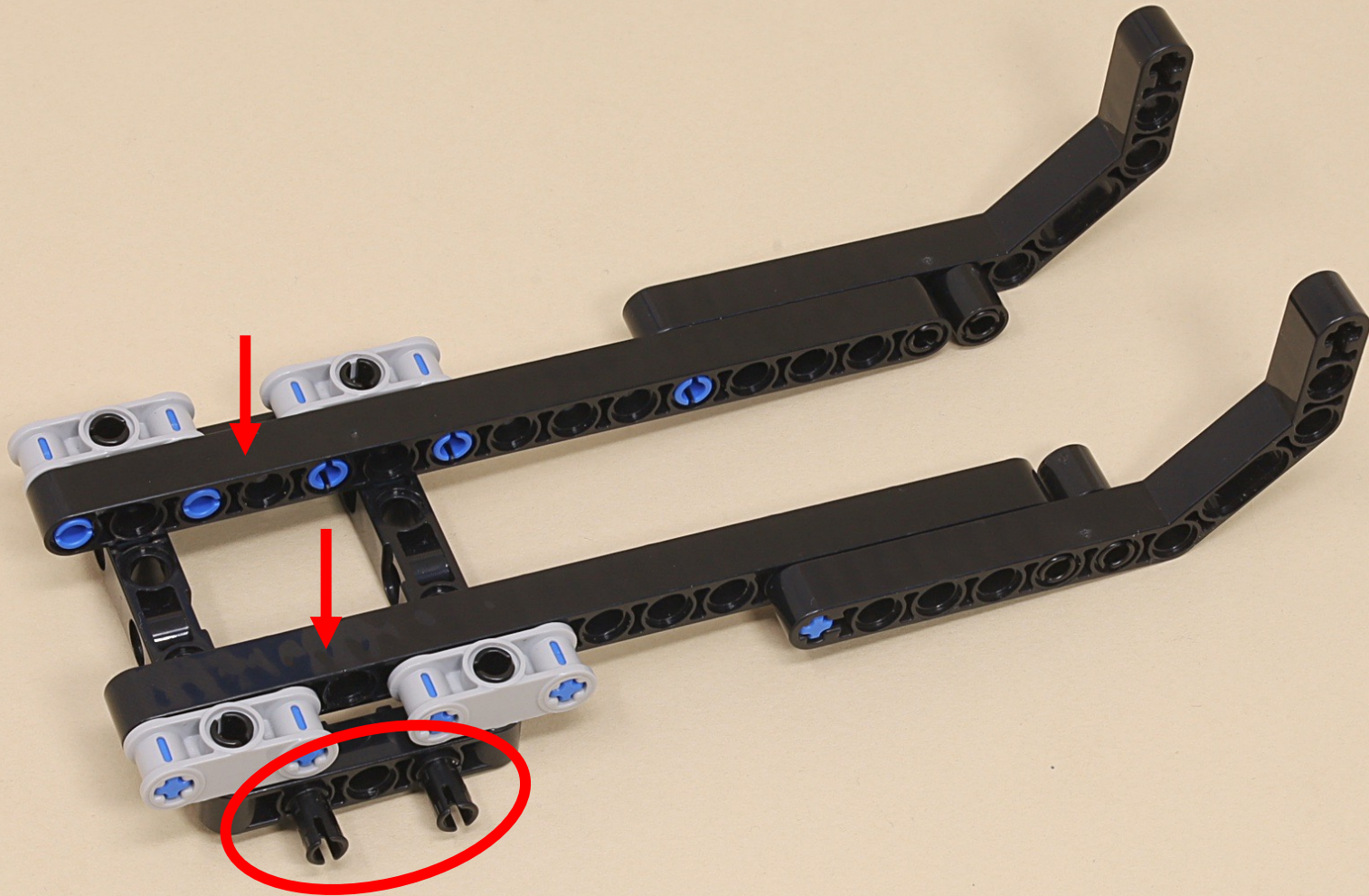


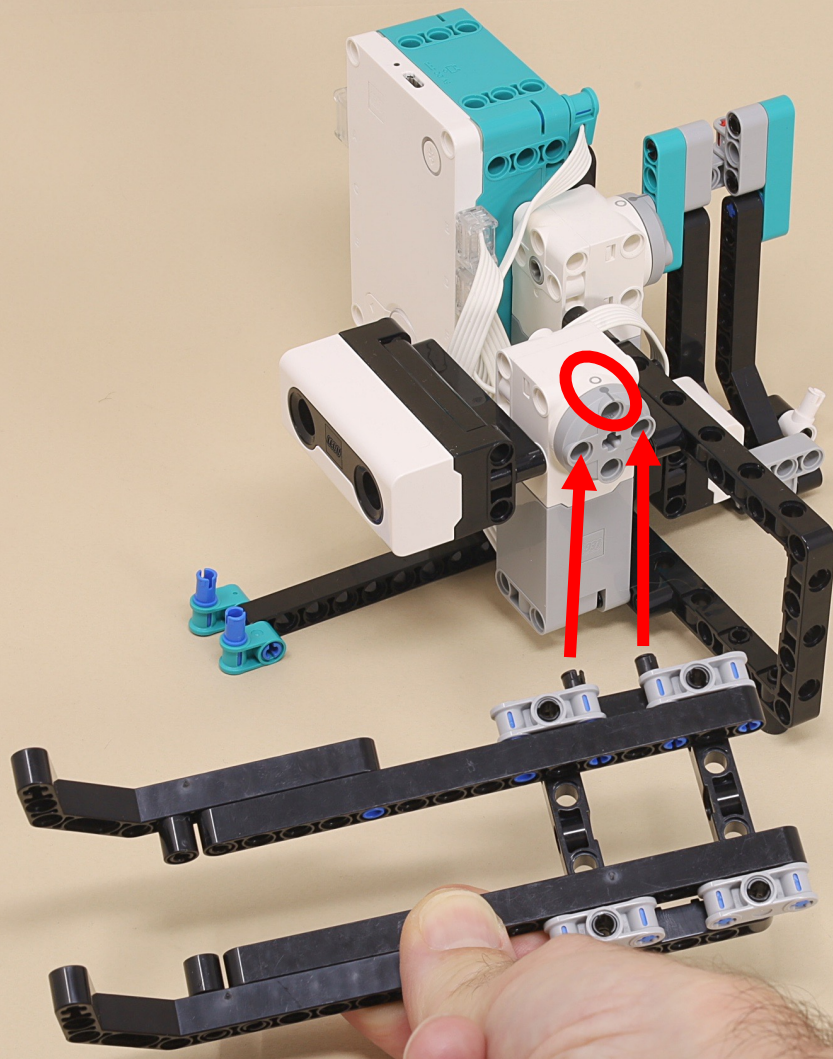




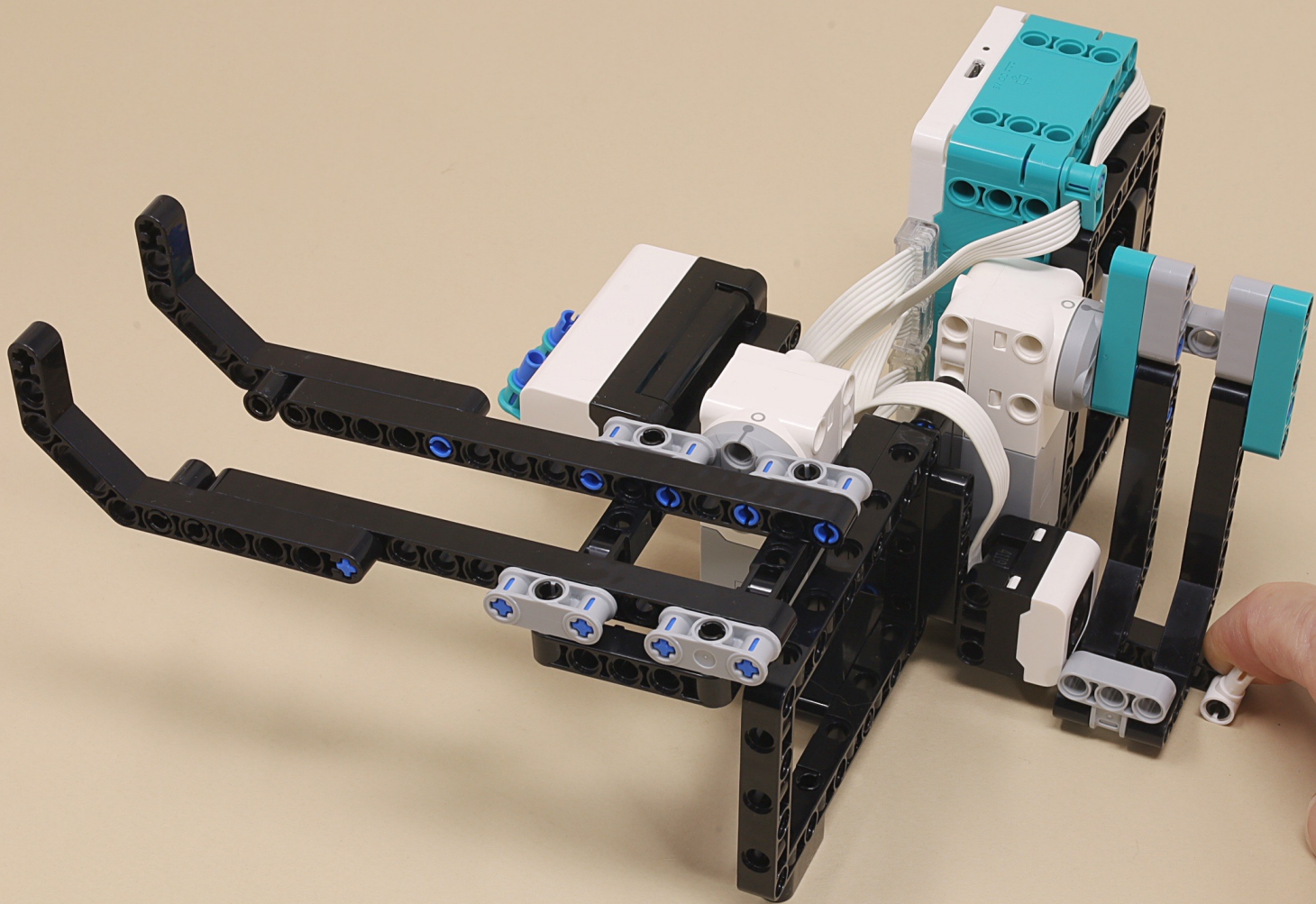
(6 x)

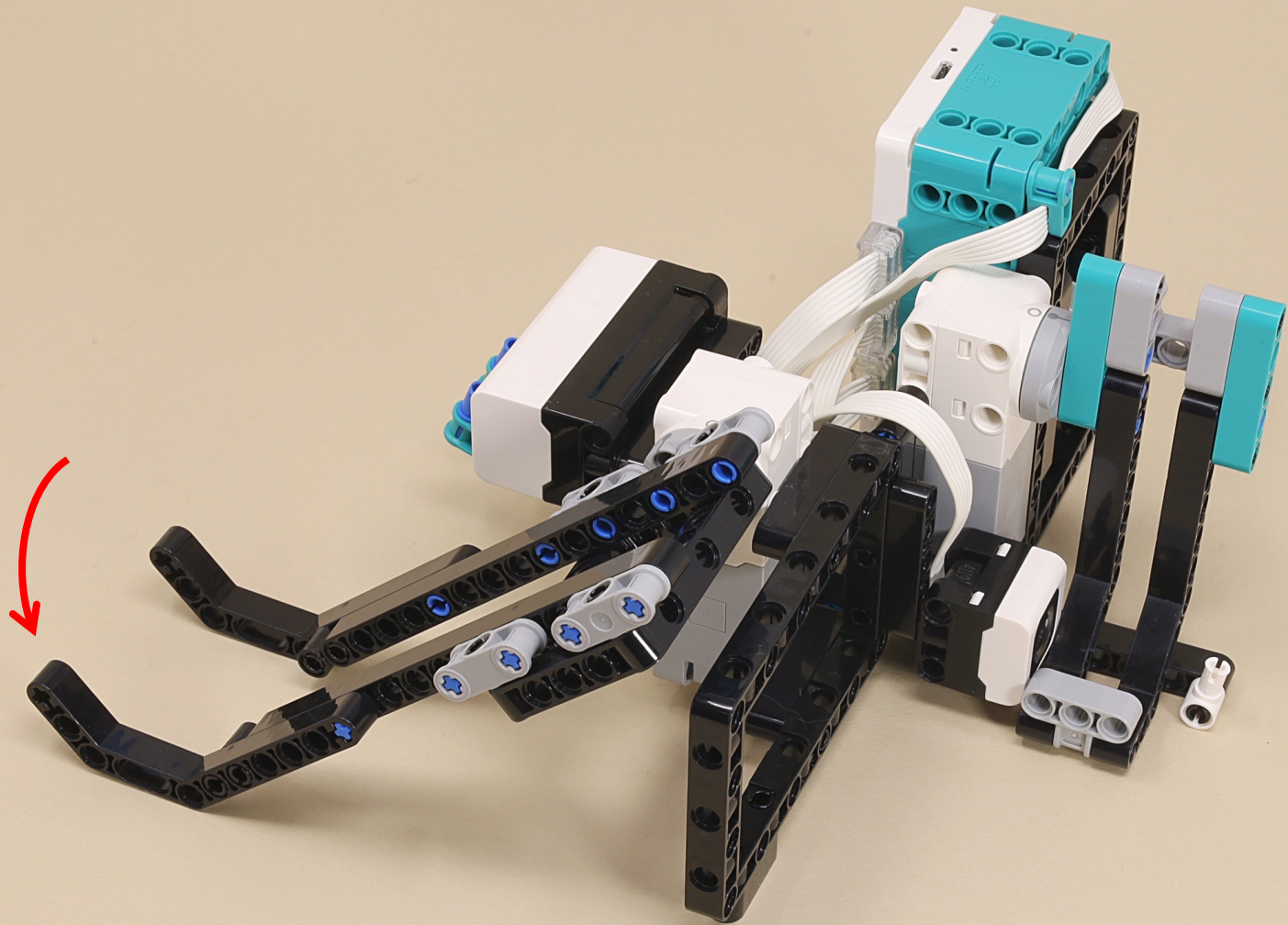




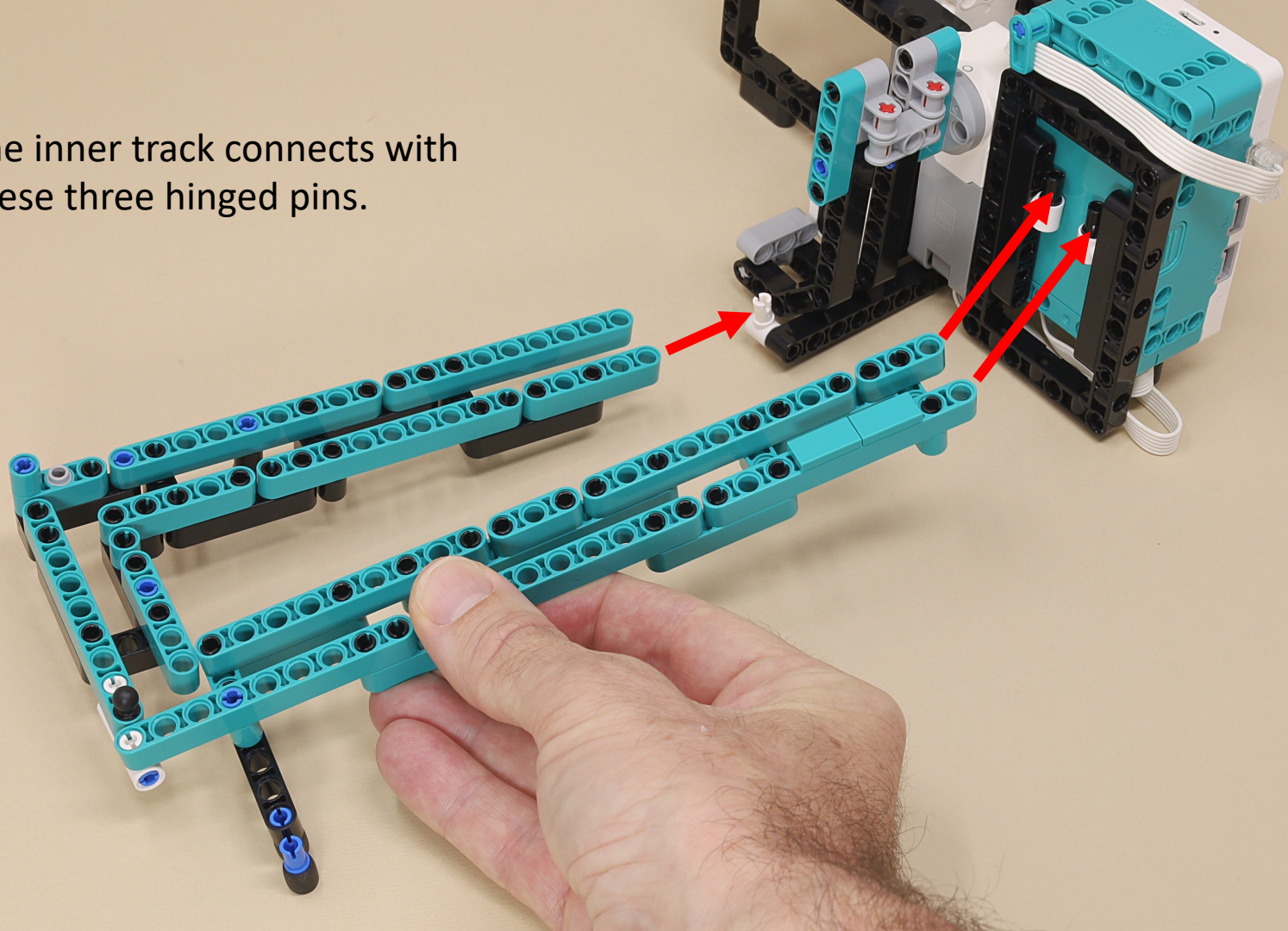


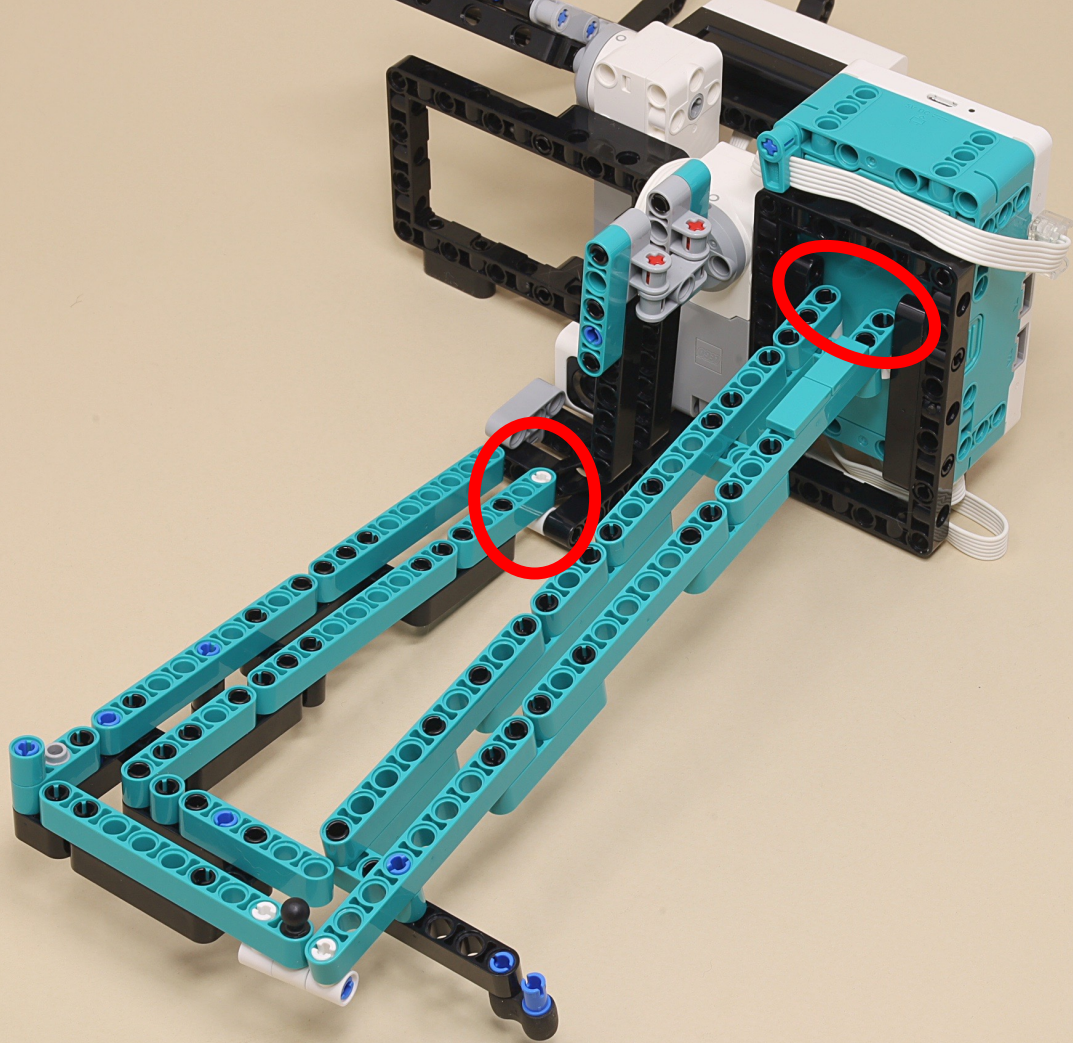
Make sure the motor is in its zero position when this lift arm is horizontal.

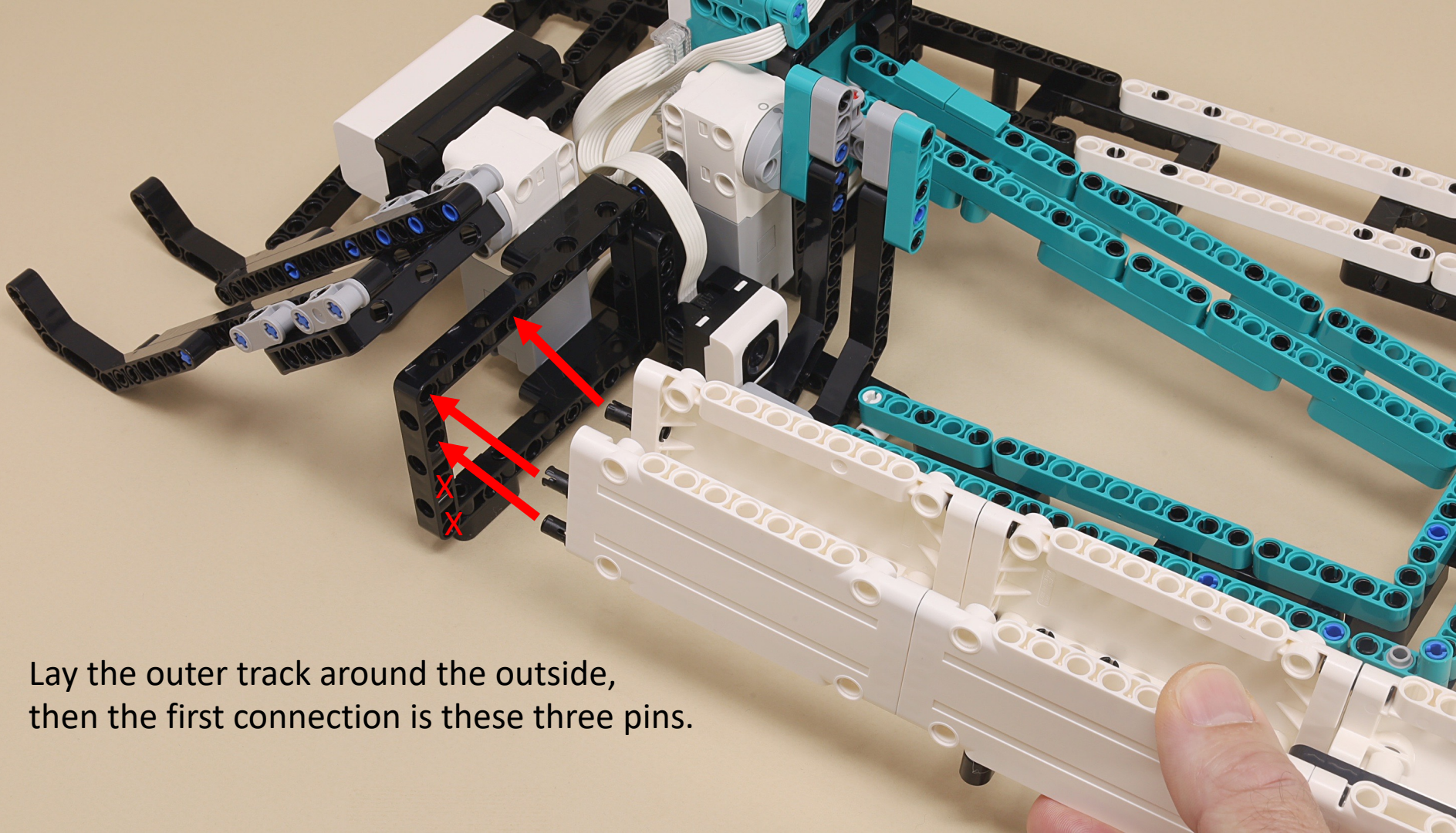




The inner track connects with these three hinged pins.

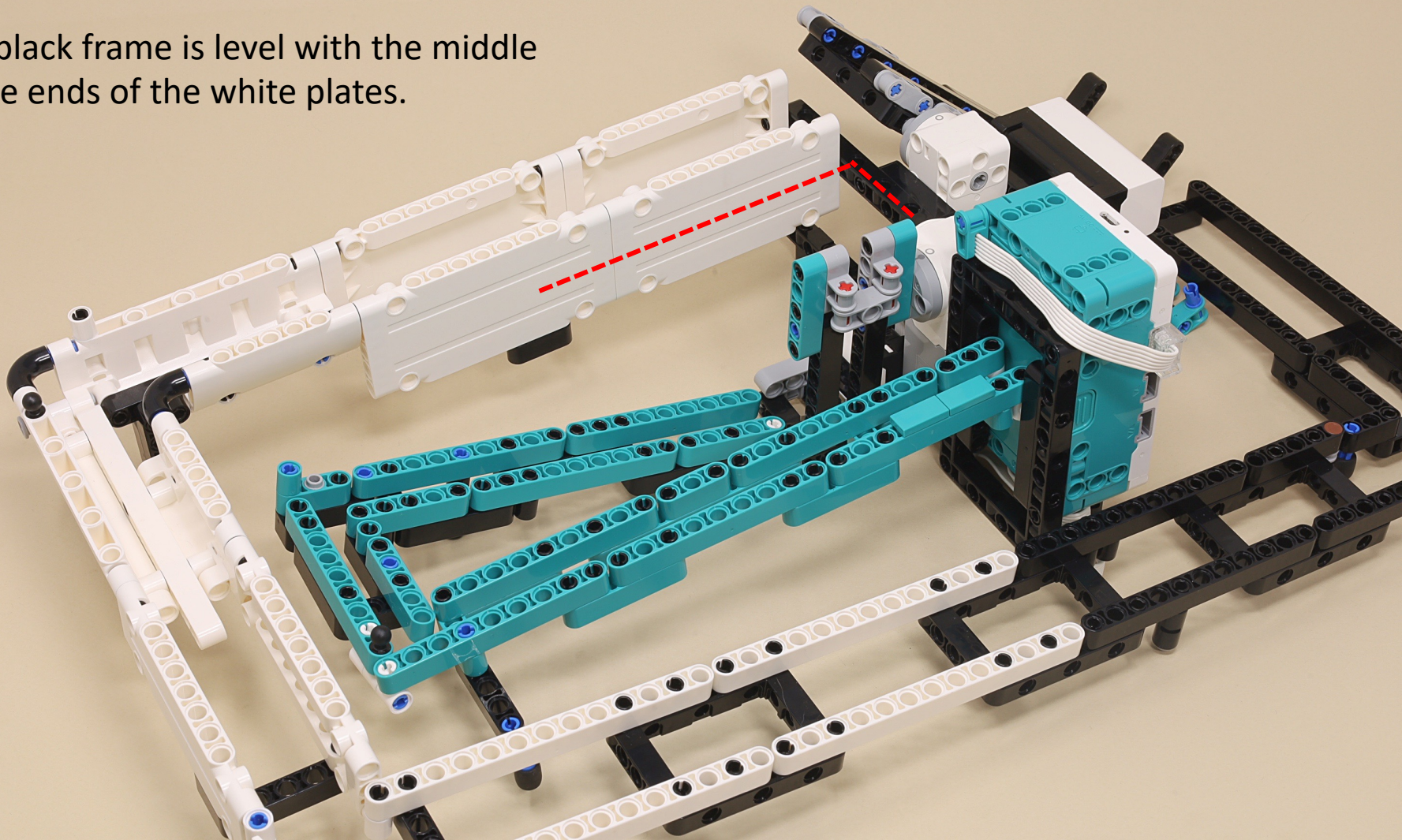


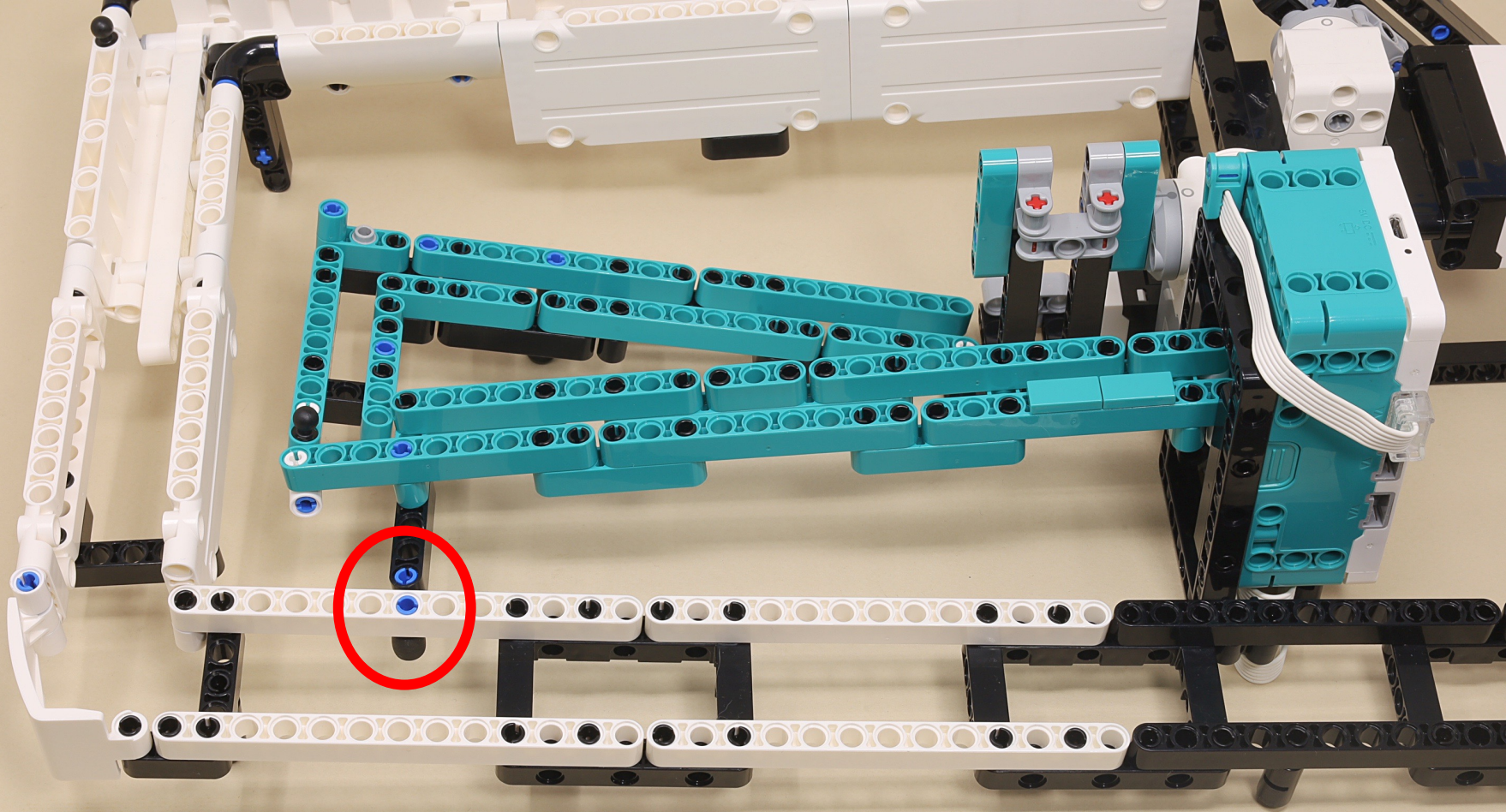




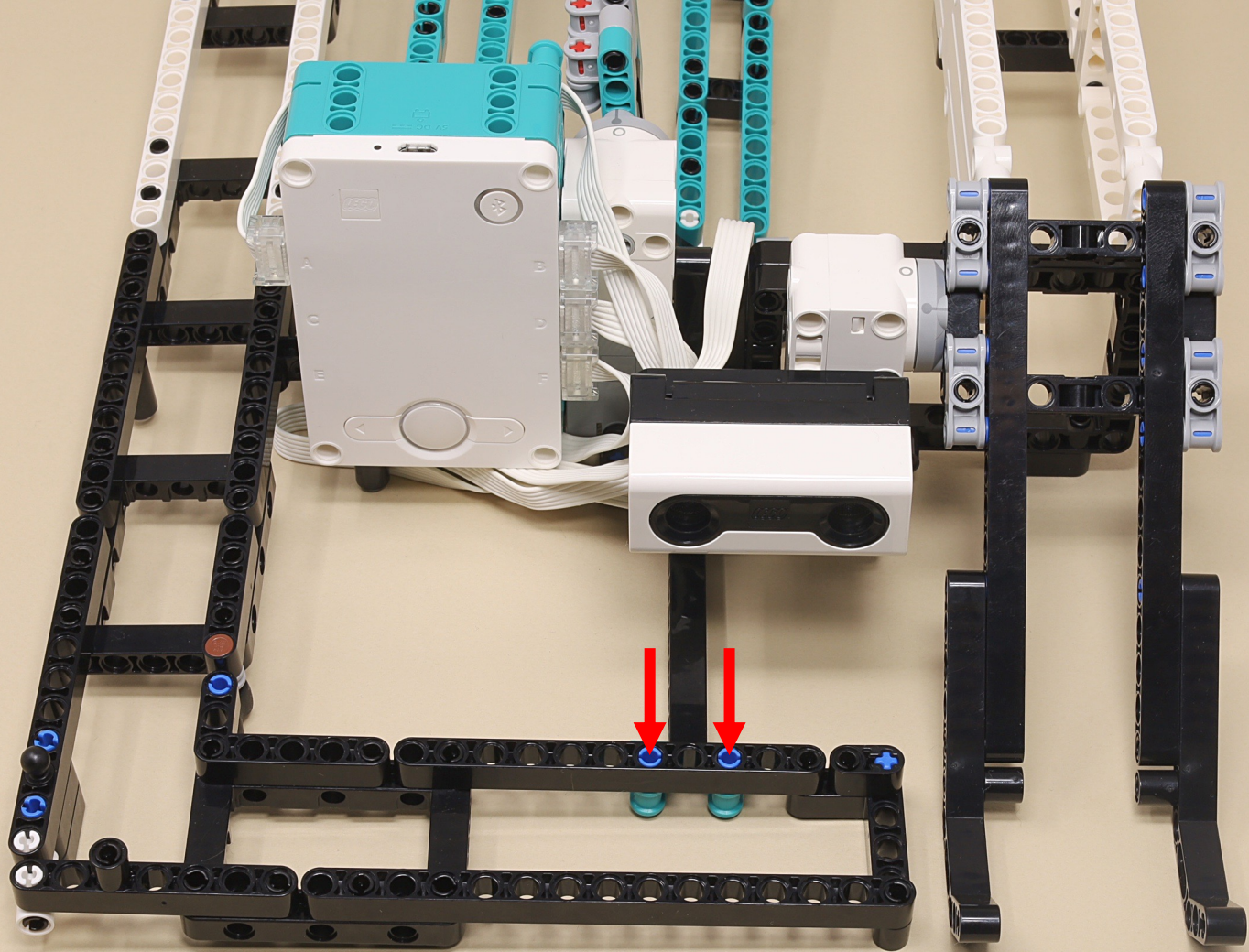
Lay the outer track around the outside, then the first connection is these three pins.

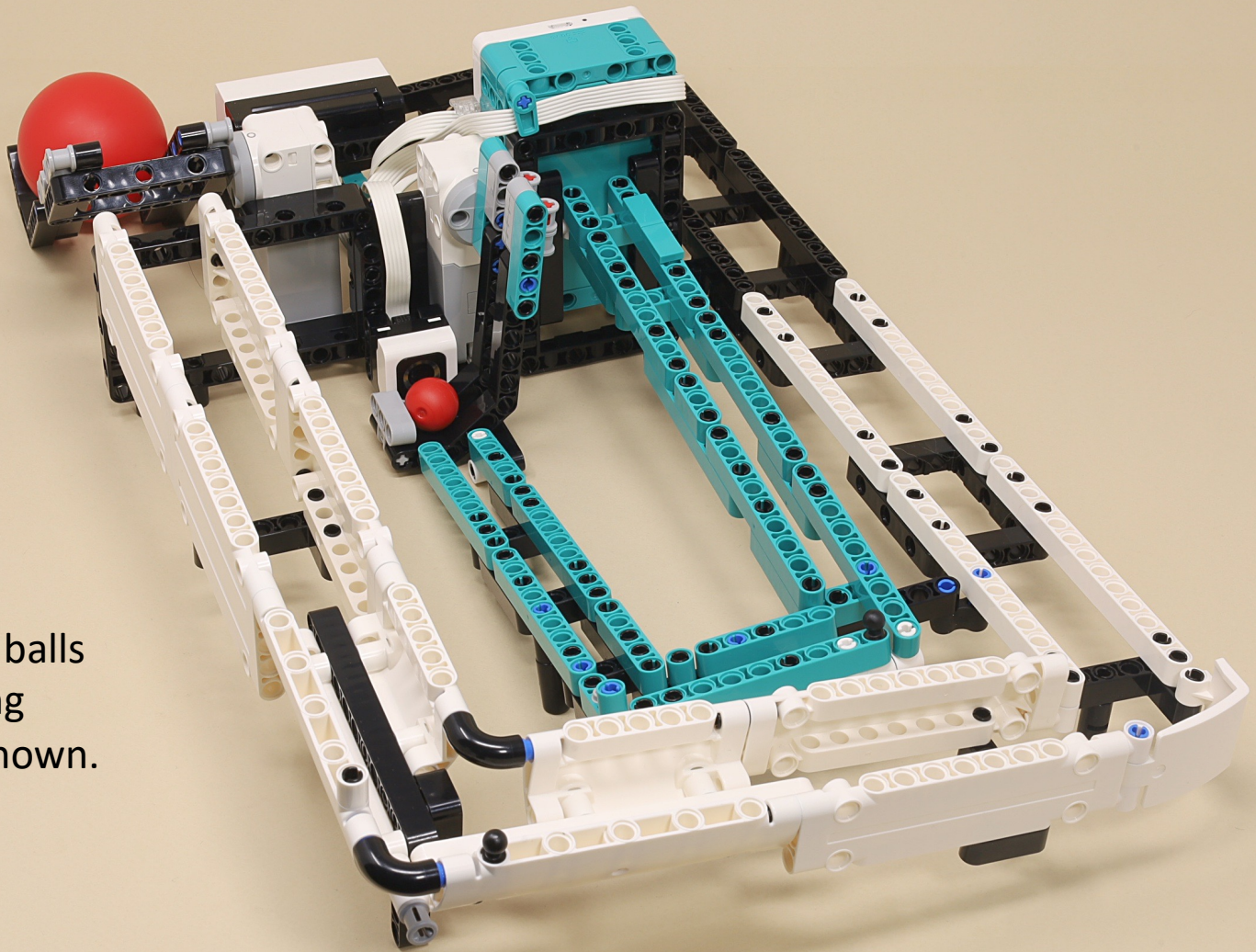
The black frame is level with the middle of the ends of the white plates.





This single pin connection needs to be flexible because it is not straight.





Place the two balls
in their starting
positions as shown.